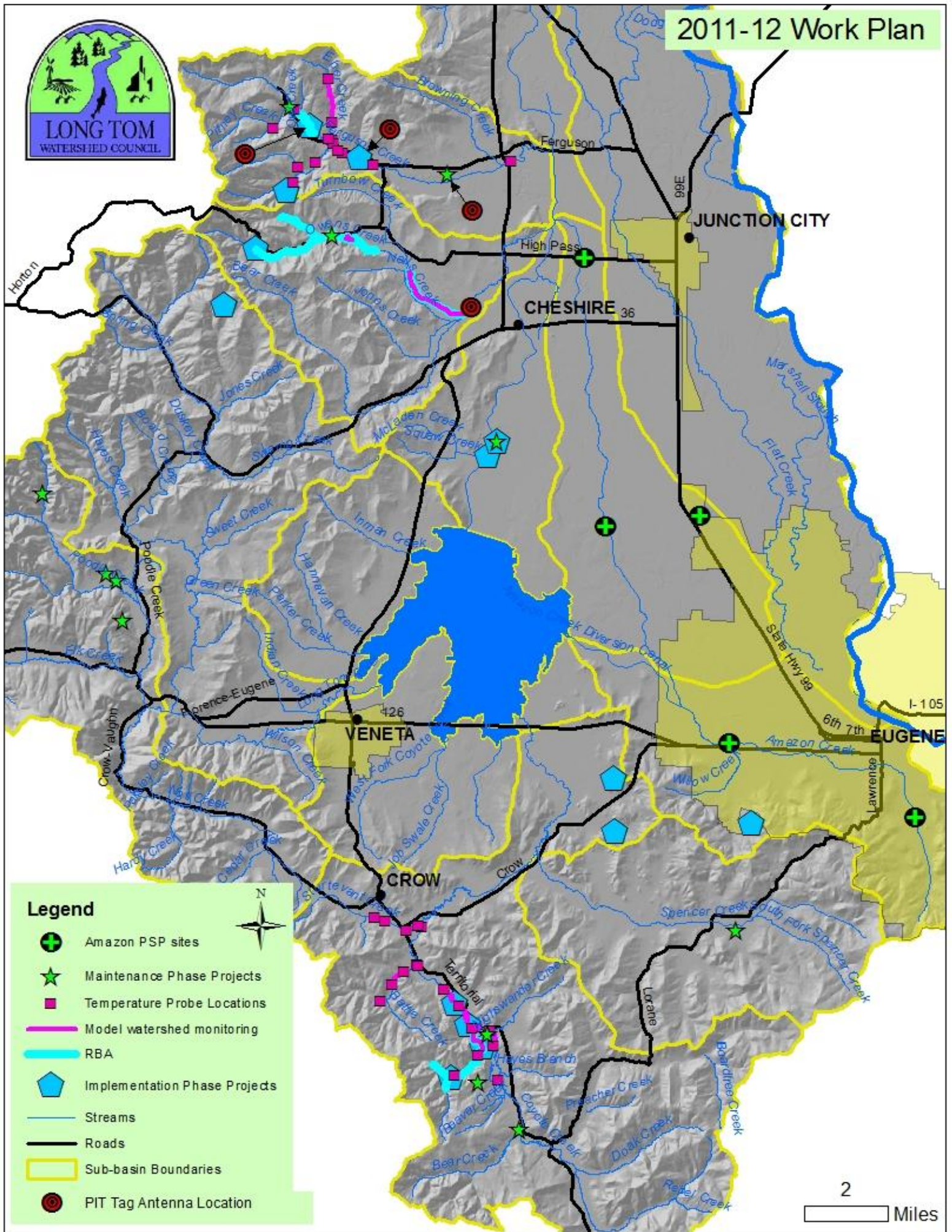


<b>LTWC Strategic Plan with Leadership &amp; FY'12 Work Focus</b>	<b>Board Leadership</b>	<b>Staff Lead</b>	<b>Technical Support or Council Member</b>	<b>Focus for FY 2012</b> Bold indicates this has direct funding
<b>1. PLANNING. Plan Strategic Actions</b>				
1.1. 10-Year Plan for 3 sub-watersheds	Jim P.	Cindy, Dana	Peg B, Becky F, Jim R, Robert	Plan is complete. Next update ~2014 after Year 5 monitoring results (MMT)
1.2. Long Tom River Floodplain Function	Max	Cindy	Kat B.	Army Corps is scoping off channel storage
1.3. Upper Willamette Floodplain Function	Max	Dana	Dave Hulse, MRT staff	Collaborate with lead entity MRT.
<b>2. MONITORING. Assess and Monitor Watershed Conditions</b>				
2.1. Regional water quality monitoring.	Deborah S-E, Therese	Cindy, MFWWC	Ric I.	Final presentation.
2.2. Fish Barrier Assessment.	Jim P	Jed	Becky F, Karen H (Leo P)	Prioritization
2.3. Project Effectiveness Monitoring.		Cindy, Josh	Pat McDowell, Peg B	<b>6 sites: Kime, Wintergreen, WIR, W. Fork Jones, Johnson, Sogge</b>
2.4. Rapid Bio-assessment.		Jed & Josh	Becky F., Thomsons	<b>Owens Ck, Jordan Creek (MMT)</b>
2.5. Model Watershed Monitoring	Max	Josh	Becky F, ABR	<b>July - Sept. Temp, stream habitat, riparian, macroinvert +. Landownr interst</b>
2.6. Fish Distribution (and Migration).	Jim	Jed	Karen Hans, Becky F	<b>Tag &amp; track the rest of ~1,000 fish Fall-Spring LLT, Bear, Ferguson</b>
2.7. Project Stewardship Program	Carl H.	Josh	Kendra S.	<b>14 projects (MMT) (hire summer seasonal assistant)</b>
<b>3. AQUATIC RESTORATION PROJECTS</b>				
Outreach: Forest-related: Steve C.				
3.1. Fish passage enhancement projects	Chad S	Jed, Cindy	Tech Team, Leo Poole	<b>11 barriers @ 4 sites (OWEB, RAC, NFWF, R&amp;E, landowners)</b>
3.2. Riparian and water quality enhancement projects	Jason H, Kim C	Jed, Josh, Cindy	Tech Team	<b>10 sites (Johnson, Koehler's, Thomson, Hagen, Mattson, Gates, King design, Stroda, 2 BLM).</b>
3.3. Instream habitat and wetland enhancement projects	Carl H, Chad S	Cindy, Jed	Tech Team	<b>2 projects (Koehler, Mattson)</b>
3.4. Wet prairie enhancement projects	Jason H	Josh, Cindy	Steve S, Ed A	<b>1 project (Erickson, Johnson)</b>
<b>4. UPLAND RESTORATION PROJECTS</b>				
4.1 Oak Savanna and Oak Woodland enhancement projects	Max	Josh, Cindy	Ed A, Steve S, Bruce N, Eric W	<b>5 projects (Sogge, Johnson, Wild Iris Ridge, Erickson, Kime)</b>

<b>LTWC Strategic Plan with Leadership &amp; FY'12 Work Focus</b>	<b>Board Leadership</b>	<b>Staff Lead</b>	<b>Technical Support or Council Member</b>	<b>Focus for FY 2012</b> Bold indicates this has direct funding
<b>5. SUBWATERSHED ENHANCEMENT PROGRAM</b>				
5.1. Subwatershed outreach and project development (Bear, Ferguson, Coyote)	Steve C	Cindy, Dana	Thomsons	<b>Outreach in Bear, Coyote (MMT).</b>
5.2. Amazon Initiative: Amazon Pesticide Stewardship Program	Jason H, Therese W, Deborah S-E	Jason, Dana	Program Committee	<b>Fall &amp; Spring sampling. Outreach. BMPs for both ag and business areas.</b>
<b>6. CITIZEN LEARNING</b>				
6.1. Education and Outreach Strategy	Kim C (schools)	Dana	MRT staff	<b>Outreach to landowners for project development: culverts (NFWF), SIP projects (MMT), annual mtg, other</b>
6.2. Educational public meetings, tours and newsletters	Meeting hosts	Rob, Dana	Ric I.	6 education events, 6 newsletters
6.3. Member and volunteer involvement	Dave T	Rob	Kat B.	<b>Database, volunteers for stewardship, monitoring (MMT, CS), office help</b>
<b>7. COLLABORATION ON OTHER WATERSHED PRIORITIES.</b>				
		<i>Staff liaison:</i>		
7.1. TMDL with small cities	Therese	<i>Dana, Cindy</i>	Ric I.	Present monitoring findings
7.4. Invasive Weeds	Dave T, Chad S	<i>Josh, Rob</i>	Tania S, Vern H, Ed A	Address invasives at restoration project sites.
7.2. Agriculture Water Quality Management Plan (SB1010)	Jason H, Chad S	<i>Jed, Cindy</i>	SWCD	Participate; LAC will meet next in 2012.
7.3. Rivers to Ridges Partnership		<i>Dana, Cindy</i>	Eric W	Quarterly meeting execs + Regular meetings implementation team
7.4. Groundwater	Jim P.	<i>Dana</i>	Tony S	Liaison to GWMA
<b>8. RESOURCE DEVELOPMENT</b>				
8.1. Grant Funding.	ALL/Officers	All		Projects (OWEB, SIP, R&E), amazon (EPA), outreach (NFWF), migration (ODFW R&E). Add private grants.
8.2. Increase Unrestricted Funding.	Deborah S-E, new board members	Dana, Jason S, Rob		Start community connections work with 2 consultants, & friends. Messaging. Fundraise a set amount.
8.3. Office Space and Physical Resources		Rob, Dana	Eric W	Retain existing; add 1 laptop and office space for new Urban Spec.
<b>9. EVALUATE &amp; ENSURE EFFECTIVENESS</b>				
9.1. Council Self-evaluation (include partners). Recruit new SC	Jim, Max, Chad	Rob, Dana		Next is in 2012, Spring or Fall
9.2. Risk Management and Fiscal Diligence	(Treasurer)	Amanda, Rob		Retain policies, add Volunteer Ins.



**Legend**

- Amazon PSP sites
- Maintenance Phase Projects
- Temperature Probe Locations
- Model watershed monitoring
- RBA
- Implementation Phase Projects
- Streams
- Roads
- Sub-basin Boundaries
- PIT Tag Antenna Location



2  
Miles

## Implementation Phase Projects

08-07—Wild Iris Ridge Phase III—City of Eugene  
09-02—Lomatium Prairie & Lower Floodplain Forest Restoration—Erikson  
09-06—Coyote Creek Upland Prairie & Oak Savanna—Woodland Restoration—Sogge  
09-07—Coyote Creek Upland Prairie & Oak Savanna-Woodland Restoration—Johnson  
10-01—Owens Creek Fish Passage, In-stream & Riparian Enhancement. -Koehler  
10-02—S Fork Ferguson Creek Tributary Fish Passage—BLM  
10-03—West Fork Jones Creek Fish Passage Enhancement—BLM  
11-01—Kime Oak Savanna & Prairie Restoration—Kime  
11-02—Ferguson & Eber Creek Riparian Enhancement.—Thomson  
11-03—Ferguson Creek Riparian Enhancement—Hagen  
11-04—Jordan Creek Fish Passage & Off-Channel Irrigation  
11-05—King Dam Removal Design—King  
11-06—Jordan Creek Fish Passage Design—Boy Scouts  
11-07—Mid-Coyote Creek Riparian Enhancement—Gates/Watkins

## Maintenance Phase Projects

02-02—Poodle Creek Restoration: Phase 1—Allison, Wesphal, Gray, Little, Bondioli  
03-01—Poodle Creek Fencing/Off-channel Watering Phase 2—Little  
03-03—Ferguson Creek Wood & Riparian Enhanc.—Holzbauer  
05-02—Bear Creek Fish Passage & Stream Enhanc.—Noble  
05-03—Owens Creek Fish Passage & Riparian Enhanc.—Turner  
05-04—Ferguson Creek Riparian & Stream Enhanc.—Bartlett/Moffett  
05-07—Historic Coyote Creek Riparian Enhancement—Johnson  
05-08—Coyote Creek Fish Passage & Jordan Creek Riparian Restoration—Mattson  
05-09—Hunton Riparian & Wetland Enhancement —Hunton  
07-01—Upper Poodle Creek Fish Passage & Riparian Enhancement—Heidt  
07-07—Murphy Wet Prairie & Stream Restoration—Murphy  
07-08—Wintergreen Farm Pond Enhancement & Invasive Species Control—Gray  
07-09—Top Lake Riparian Enhanc.—Mattson

## Monitoring to be conducted

At least 18 temperature probes will be installed within the Coyote and Ferguson sub-watersheds for continuous summer monitoring. (Alternate years in Bear Creek).  
8.17 miles of Rapid bio-assessment (snorkeling and riparian analysis, “RBA”)  
7.5 miles of model watershed monitoring  
Fall and spring Amazon Creek sampling at 5 locations  
Fish tracking at 4 stations  
Individual project monitoring (not pictured)

## New/Not yet pictured

11-08 – Stroda Grassed waterway- Rattlesnake Tributary—Stroda