

Long Tom Watershed Council Programs and Activities



The Long Tom River, shown in the foreground, is a major tributary of the Willamette River in Oregon. Their historic confluence is shown at bottom left, and the bypass confluence created circa 1940 is shown near the right top of photo.



The watershed is partially bounded by the Coast Range foothills.



The watershed includes the cities of Monroe (shown above), Veneta, Elmira, Noti, Junction City, and Eugene.

Long Tom Watershed Council

751 S. Danebo
Eugene, OR 97402
(541) 683-6578
www.longtom.org



A carving of our native cutthroat trout, by volunteer Paul Reed

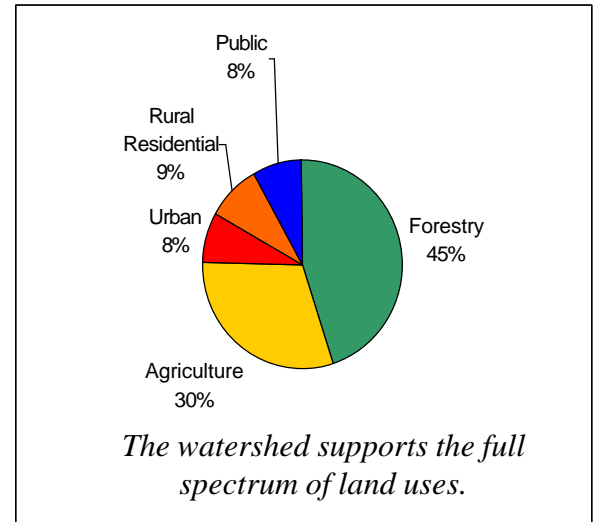
MISSION: *The Long Tom Watershed Council serves to improve water quality and watershed condition in the Long Tom River basin through education, coordination, consultation, and cooperation among all interests, using the collective wisdom and voluntary action of our community members.*

THE WATERSHED

The 262,000-acre Long Tom River Watershed supports the full spectrum of land-uses. Ownership is primarily private and in small parcels. Permanent settlement of the basin has changed ecological conditions significantly, and some of this has resulted in a degradation of stream water quality and upland habitats.



The watershed is still home to populations of native cutthroat trout, Pacific lamprey, western pond turtle and many other species. Spring Chinook use its lower reaches for rearing. It also has the largest remaining extent of wet prairie habitat in the Willamette Basin.



Our goals are to maintain and improve water quality, and to enhance habitat, especially riparian and wetland habitat, for fish and wildlife. Our methods are to work with private landowners and public land managers to voluntarily conserve and restore ecosystem functions on their lands and in neighboring streams.



VISION: *Our vision is a healthy watershed that ensures water quality, and riparian and wetland habitat for fish, wildlife, and native plants while recognizing the importance of people's economic livelihood and quality of life.*



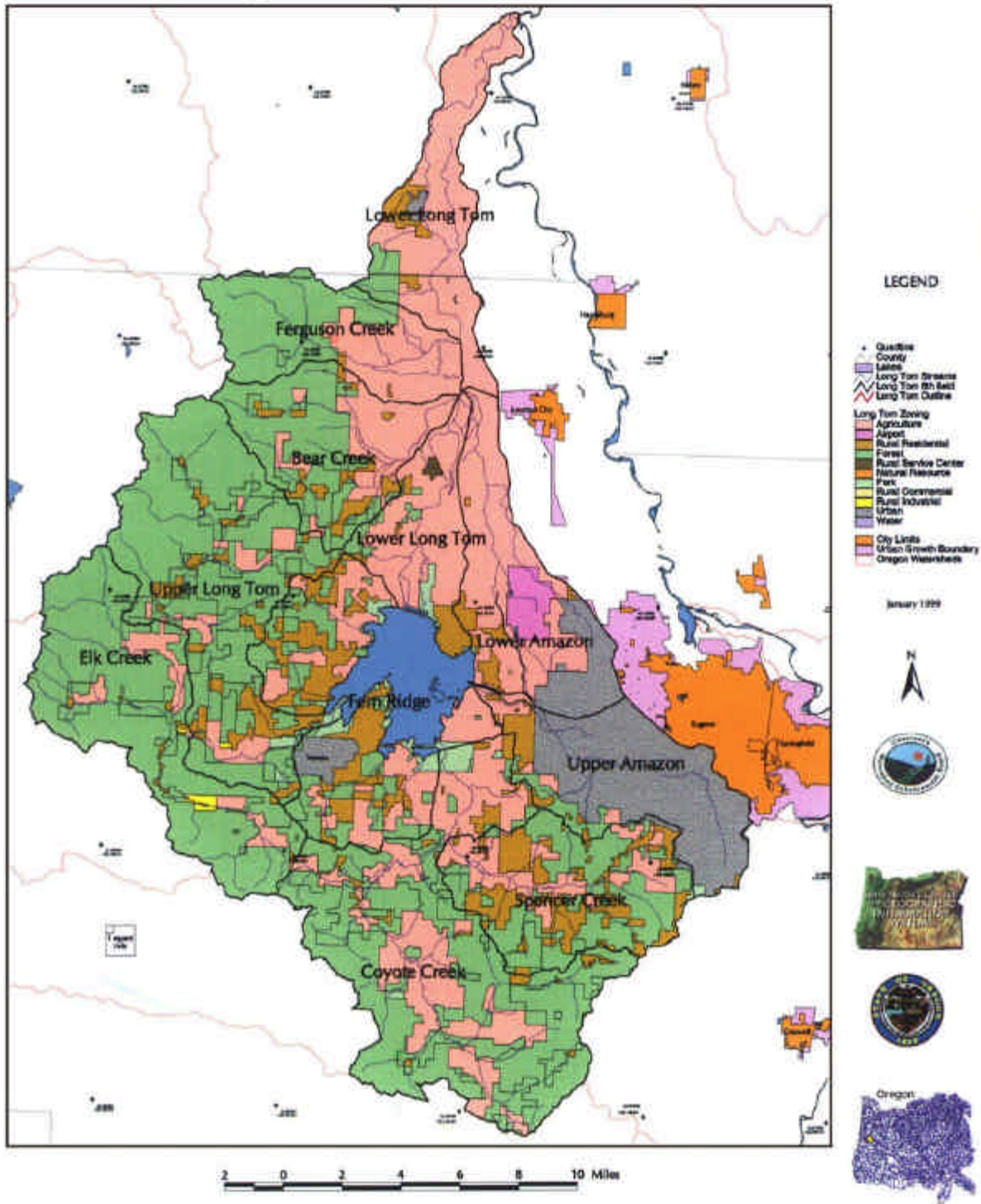
THE COUNCIL

Formed in 1998 and recognized by the Lane and Benton County Commissioners for our diversity of membership, the Council is a citizens' group with no regulatory authority, nor does it wish any. We have a not-for-profit mission and fiscal agent. Membership is automatic for everyone who lives, works or plays, or is just interested in the watershed and there are no dues. The group operates by consensus and strives to stay positive and proactive in its nature.

PURPOSE: *The Council will provide opportunities for people who live, work, play, derive benefits from, or are affected by the Long Tom watershed to cooperate in promoting the health of the watershed and communicating the social and economic benefits to the community.*

Consider coming to a meeting, visiting the office, or contacting us for more information.

Long Tom Sub-Basins and Landuse



OVERVIEW OF PROGRAMS & PRODUCTS



ASSESSMENT, PLANNING, & PRIORITIZATION

Before deciding where to work, the Council conducted a **Watershed Assessment** to gain a comprehensive overview of the current conditions in the watershed. It is available in local public and university libraries, from the Council, or on our website. From the Assessment and the many ideas people have for action, we build an **Action Plan** every two years to guide our staff, interns and volunteers. Currently we are working to build a **Conservation Strategy** with the help of local scientists and stakeholders. This will prioritize the Council's watershed improvement work over the long-term.

A stakeholder is someone with a "stake" or interest in the watershed and its health.

MONITORING

The Council's monitoring program examines **water quality** at the mouth of each creek flowing into the river, some headwater locations, and at certain points along the Long Tom River itself. This has provided baseline information and shown us where impairments are, which in turn show priority areas for improvement. We have also conducted a pilot study on **agricultural runoff** with farmers on sites with measurable drainages. This way changes in management practices can be tested for results. In fall of 2003, we refined our efforts toward **watershed monitoring**. In cooperation with others we've added monitoring to better understand impairments we're seeing, reduced monitoring where problems have not been detected, and added flow and the periodic monitoring of fish and macroinvertebrate populations. In the future we plan to also address the safe passage of aquatic life through culverts.

PROJECTS :

CONSERVATION, RESTORATION, & ENHANCEMENT

The information we have collected through assessment and monitoring of watershed conditions feeds directly into our conservation, restoration and enhancement activities. We prioritize projects that target identified water quality problems and threatened habitat types, and that protect freshwater biodiversity. For many private landowners, integrating these activities into their ways of doing business is important. The Council assists interested property owners to identify what types of habitat or stream functions they can improve on their property, and plays a key role in finding technical assistance or funding as needed for a variety of projects.

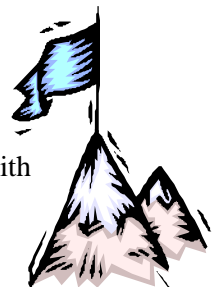
Integrating actions for watershed health into regular ways of doing business is important to maintain the livelihood of private landowners.

EDUCATION & OUTREACH

The watershed council works with individual landowners, organizations, businesses, and agencies who have an interest and stake in the watershed and its health. Our goal is to explain watershed information, then assist people as they decide to take steps to improve conditions. In addition to monthly meetings, we have monthly columns in the local rural newspaper, fair booths, and periodic workshops.

SUB-WATERSHED ENHANCEMENT PROGRAM

In our Sub-Watershed Enhancement Program, begun in 2002, we meet with small groups of landowners to explain the current data for their creek basin, listen to concerns and answer technical questions, tour the creek, reference sites, and project examples, and follow through with assistance as people determine how best to solve known impairments or better manage their property.



LONG TOM WATERSHED ASSESSMENT

The Council's watershed assessment presents current and historic information on the physical, biological and cultural landscape in the Long Tom Watershed. This assessment is an important educational resource for council members wanting to learn about watershed conditions and ecological functions. In addition, results from the assessment are being used to: 1) identify aspects of the watershed that warrant more detailed study and 2) identify ecological functions and habitat types that would benefit from restoration or enhancement. Finally, this assessment provides a scientific framework for understanding human impacts on the watershed so that people can make informed choices as to how they would like to help maintain or restore watershed health. Below is a brief summary of each chapter from the assessment.

Chapter 2- Sub-basins, Ecoregions, Vegetation and Land Use provides a general description of the watershed, including its location, ecoregion, vegetation, population, land use and ownership patterns. This provides an important background for understanding the potential human influences on water quality and habitat.

Chapter 3- Historical Conditions characterizes the watershed before Euro-American settlers arrived in the mid-1800s and documents changes caused by settlement and subsequent population growth in the watershed. This information may help determine appropriate standards or goals for water quality and habitat conditions and guide council restoration activities.

Chapter 4- Channel Habitat Types describes stream channel morphology within the basin. Channels are categorized by their relative sensitivity to flow and channel modifications (either human or natural). Stream channels that are highly sensitive to these influences should be prioritized for protection or enhancement if they have been negatively impacted by human activities.

Chapter 5- Hydrology and Water Use describes how local climate, geology, topography and land use influence stream flow patterns in the watershed. Data on stream flow and water use is presented in order to identify potential problems with peak and low flows. This information may be used to identify opportunities to minimize human caused peak flow enhancement and to target streams in potential need of instream flow protection.



Chapter 6- Stream Channel Modifications documents change to stream channels due to channel straightening, bank reinforcement, gravel mining, road crossings, and dams or impoundments. These changes are then discussed in light of the effects they have on instream and riparian zone habitat.

Chapter 7- Riparian Zone Conditions describes the current condition of riparian zones in the watershed and compares them with historic conditions. Specific information includes width, vegetation type, density and size of trees. This information will contribute to our understanding of how riparian zones may be affecting water quality and habitat in the Long Tom Basin and highlight areas for potential restoration.

Chapter 8- Wetland Types, Distribution and Functions describes the type, functions and general location of wetlands in the basin and estimates the amount of wetland loss and potential restoration opportunities.

Chapter 9- Sediment Sources identifies the most likely sources of human caused sediment delivery to streams, which can be used to target activities that will reduce these sources.

Chapter 10- Water Quality presents and analyzes current water quality data collected by several government agencies and lists streams that have been identified as water quality impaired by the Oregon Department of Environmental Quality.

Chapter 11- Fish and Wildlife describes the types of fish found in the watershed, their habitat needs and current habitat conditions. This chapter also identifies wildlife species that depend on riparian zones and wetlands.

Chapter 12- Watershed Condition Summary summarizes and integrates information from each component of the assessment. This highlights the most significant sources of water quality and habitat degradation, which may be used by the watershed council to identify and prioritize actions to improve water quality and habitat within the basin.

WATER QUALITY MONITORING PROGRAM

The Council's water quality monitoring program has provided invaluable information on watershed health since 1999. Our program includes monthly monitoring at 18 sites around the watershed, continuous temperature monitoring during the summer at 34 stream sites, and a pilot study of the water quality in surface runoff on private agricultural lands. Through these programs, council volunteers and local farmers have collected water quality data in many parts of the watershed that had little or no regular monitoring previously.

At the 18 baseline sites volunteers and the monitoring coordinator measure water temperature, dissolved oxygen, turbidity, conductivity, *E. coli*, nutrients, and suspended solids. Water temperature and *E. coli* show the most impairment across all sub-watersheds. Our data show that many streams have temperatures that are too warm for cutthroat trout anywhere from two weeks to a few months out of the summer.



Ken Coricello and Kyle Everett testing pH on a tributary to Coyote Creek.



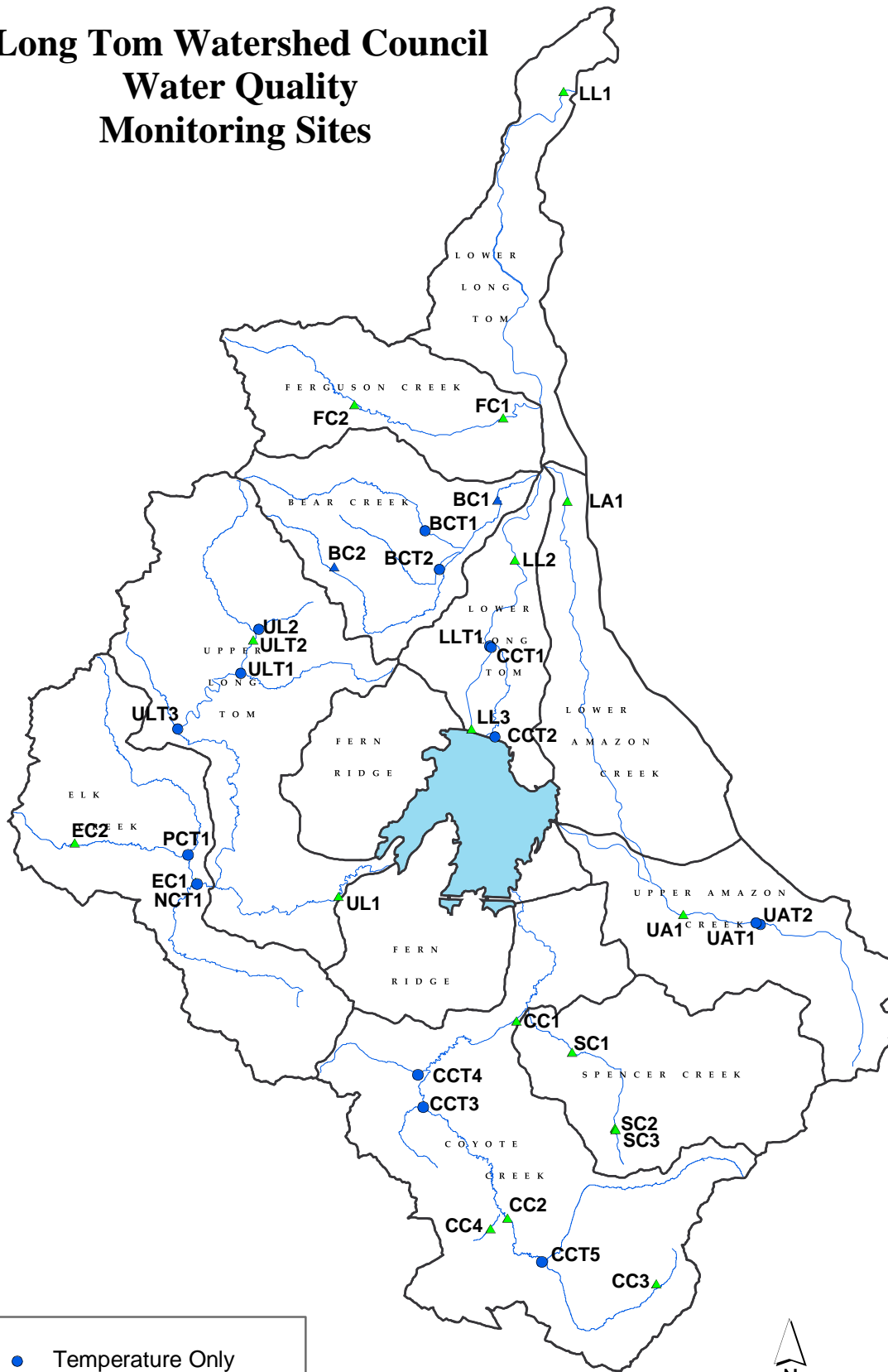
Collecting Macroinvertebrates: Our monitoring program also provides water quality and macroinvertebrate data to evaluate the success of our restoration projects. Here Cary Kerst examines a dragonfly larva from Amazon Creek.

The agricultural pilot study involved eight area farmers who evaluated the concentrations of nitrogen, phosphorus, and sediment running off of their fields. Crop types included mint, Christmas trees, annual and perennial ryegrass, fescue, sugar beets, and corn. Samples of surface runoff during winter rain events were analyzed for nitrate-nitrite, phosphate and total suspended solids.

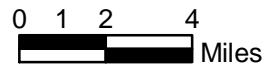
We use the data we collect to communicate watershed conditions to Council members at meetings and in reports. We also share this information with local, state, and federal agencies who are using the data to better manage water resources in the basin.

Water quality data and information from our Watershed Assessment provide key information for our Sub-watershed Enhancement Program. In this program, we sit down with groups of landowners at local residences, share the latest information, and share ideas for actions to improve conditions in their sub-watershed. Residents in the Ferguson Creek and Poodle Creek sub-watersheds responded to the information by proposing projects on each of their properties. Four of these are being implemented in our 2003-05 group of projects funded by the Oregon Watershed Enhancement Board.

Long Tom Watershed Council Water Quality Monitoring Sites



- Temperature Only
- ▲ Standard WQ Sites
- Subbasin Boundary



SUB-WATERSHED ENHANCEMENT PROGRAM

People can think about the whole watershed once in a while, but most easily understand their local creek basin and how to act on their own property.

WHAT IS IT?

One Council goal is to help people solve the known problems in their creek basin in a proactive and positive manner. We have accomplished this by sharing and explaining the current data to small groups in private settings co-hosted by a sub-watershed resident. There we can answer the tough questions that come up to people's satisfaction, help to identify possible solutions, and assisting during implementation as needed.

There are ten main creek sub-watersheds in the greater Long Tom Watershed. For each, the Council built a creek profile listing the special features and known impairments based on current data from the Watershed Assessment, Water Quality Monitoring Program, and local scientific knowledge. We also have detailed maps, photos, and other resources available to draw from.

WHY WOULD I PARTICIPATE IN THIS?

People may participate because they want to do their part to keep the water clean and the land healthy, and to make sure they are not contributing to pollutants in the creek with excess nutrients, sediment, and bacteria off their land. Others may want the chance to learn what the issues are and get them taken care of before anyone else feels compelled to do it – perhaps even to have a success story to tell about the experience.



A wooded swamp holds and cools water, and provides excellent habitat for trout.



Downed wood in the stream creates channel complexity, and catches sediment to build good creek-bottom habitat.

RESULTS

THUS

FAR...

Generous landowners in Ferguson and Elk Creek basins hosted the first meetings and initial results have been heartening, with *five projects resulting from just three meetings and tours*. One thing that helped allay fears was to know that the Council has no wish to single anyone out as having problems on their place. *Any given stream section is influenced by not only the lands immediately around it, but also by whatever happens upstream, downstream, historical events, and natural causes.*

THE AMAZON DIFFERENCE

The Amazon Creek basin is very urbanized and complex in nature, and this required a different approach. Dedicated residents and representatives from the City of Eugene and non-government organizations have been working steadily to draft objectives, determine what is already being done toward those, and identify actions the Council can work on. They share their results with the Council on an ongoing basis so the group can stay active and effective in the urbanized portion of the watershed.

We are thankful for each person who is willing to take a step toward making their creek healthier. If there's any singling out, it is to say thank you.

HISTORIC COYOTE CREEK RESTORATION PROJECT

JUNE 2001 – JUNE 2004

PARTNERS: U.S. Fish & Wildlife Service, Art Johnson, Long Tom Watershed Council

LOCAL & FEDERAL MATCH: \$46,840

TOTAL PROJECT COST: \$71,990

This project is on a 100-acre site surrounding a historic channel of Coyote Creek about 3 miles north of Fern Ridge Reservoir. Beginning in 2001 the Council and U.S. Fish and Wildlife Service have assisted the landowner in restoring the creek and surrounding fields to historic conditions. In the first phase of this project we re-connected two segments of the creek that had been severed many decades ago when the land was cleared for agriculture. We also restored the riparian area by removing non-native blackberry and planting native trees in their place. In addition, we installed stop-logs on the two culverts draining the restored Coyote Creek segment into the Long Tom River. This has allowed more water to remain in the creek, which now flows late into the summer.



Tree Planting: Feb. 2002- Students from Willamette and Churchill High Schools, Lane Metro Youth Corps, and other volunteers have planted almost 2000 native trees at this site.



Before Excavating: August 2001- Area to be excavated between 2 disconnected segments of Coyote Creek. Foreground vegetation is reed canarygrass. Wheat is growing behind the person in the photo.



After Excavating and Restoring Hydrology: Feb. 2003- Water now flows between the 2 creek segments, which will one day be shaded by native trees along the banks.

In the second phase of this project we removed blackberry along the remainder of the creek and replanted the riparian zone with more native trees and shrubs. All together we have restored almost 3 miles of riparian zone at this site! In addition, we are working to restore 15 acres of the farmland on this property to native prairie and oak savanna by 2004. Future phases at this site will restore the remaining 75 acres of farmland to native prairie and oak savanna.

The diversity of habitat that will soon exist at this site will support many kinds of fish and wildlife, including threatened species such as western pond turtle, red-legged frog, streaked horned lark, and Lewis' woodpecker.

AMAZON CREEK ENHANCEMENT PROJECT

JUNE 2001 – JUNE 2003

PARTNERS: City of Eugene, Long Tom Watershed Council, Rachel Carson High School

LOCAL MATCH: \$149,550

TOTAL PROJECT COST: \$157,650

Amazon Creek flows through the City of Eugene and empties into Fern Ridge Reservoir and the Long Tom River. Like many urban streams, this creek looks and functions very differently than it did historically. Early settlers in the area described it as a vast marsh in the winter. Inevitably, the City grew up around the creek and residents became intolerant of the frequent flooding. In the 1950s the creek was deepened and straightened to reduce

flooding. The water quality and habitat the creek once provided for plants, fish and wildlife have been greatly diminished. Water quality problems in Amazon Creek include high water temperature, low dissolved oxygen, high *E. coli* concentrations, and high turbidity.

This restoration project began in September 2001 on a section of Amazon Creek in west Eugene. The City widened and created braids in the channel bottom, excavated and re-graded the south bank to a gentler slope, and enhanced wetland in the lower riparian area. Existing non-native vegetation on the channel slopes and stream bottom was replaced with native shrubs and wetland plants.

The Council, Eugene Stream Team, and students from Rachel Carson High School planted hundreds of native shrubs in February of 2002. We also teamed up to evaluate the project's effectiveness by monitoring water quality up and downstream of the project, sampling for macroinvertebrates and monitoring survivorship of the shrubs and trees we planted.

This project, in conjunction with past and future restoration on Amazon Creek, fits into a long-term goal of restoring Amazon Creek. Riparian and instream habitat improvement will benefit local songbirds, waterfowl, wildlife and macroinvertebrate species. More vegetative cover within the active channel may improve water quality by lowering water temperature in the summer and the filtration of sediment and nutrients from the water.



Excavating at Amazon Creek: Sept. 2001- Thousands of cubic yards of soil were removed along the creek. The floodplain was then re-contoured to create several high flow channels adjacent to the main channel.



Tree Planting: Feb. 2002- Volunteers from the Council and City of Eugene Stream Team plant hundreds of native wetland shrubs on the newly contoured banks. Jute matting was placed on the exposed soil to reduce erosion while shrubs and grass became established.

POODLE CREEK FENCING & RIPARIAN ENHANCEMENT PROJECT

FEBRUARY 2002 – JUNE 2003

PARTNERS: Rick Allison, Jack Gray, Mark Westphal, Rick & Patti Little, Will & Cathy Bondioli, Long Tom Watershed Council

LOCAL MATCH: \$6,937

TOTAL PROJECT COST: \$29,761

Five adjacent landowners along Poodle Creek spearheaded a project to fence livestock from their sections of the creek and enhance the riparian area by planting native trees. Each landowner has also developed off-channel watering stations.

Poor water quality, especially temperature and *E. coli*, and riparian zone alterations were identified as significant limiting factors in the Council's watershed assessment. Additionally, data collected in the Poodle Creek sub-watershed through the Council's water quality monitoring program has shown summertime water temperature and *E. coli* levels that do not meet state standards. This project will help improve water quality in the creek by preventing livestock from being in direct contact with stream water and trampling the banks of the creek. In addition, planting trees along the creek will increase shade, improve bank stability and provide a source of large wood to the creek in the future.



Fencing Along a Tributary of Poodle Creek: The landowner took advantage of trees along the creek to brace the new fence. He also developed a gravity feed system to provide off-channel watering for his cows.

PETERS' RESTORATION & ENHANCEMENT PROJECT

FEBRUARY 2002 – JUNE 2003

PARTNERS: Will Peters, U.S. Fish & Wildlife Service, L. T. Watershed Council

LOCAL & FEDERAL MATCH: \$9,300

TOTAL PROJECT COST: \$13,297

This project will enhance wetlands along a seasonal tributary of Coyote Creek, improve conditions for oak savanna species, and enhance an existing pond for western pond turtle habitat. Wetland enhancement will include creating several small check dams of wood and mud to reduce scouring of the channel bottom and keep water in the stream until late June. This will enhance conditions for vernal pool plant species, a rare wetland type in this area, and their associated insect and amphibian community. Managing the property for oak savanna, mainly through bi-annual mowing, will favor native prairie plants like Kincaid's lupine and Romer's fescue, and benefit species like streaked horned lark, acorn and Lewis' woodpecker, and Fender's blue butterfly.



Turtle Pond: A log was placed in this pond to provide a basking site for pond turtles. In addition, the south-facing bank of the pond will be kept free of vegetation to provide nesting sites for turtles.

NEW RESTORATION PROJECTS UNDERWAY

JUNE 2003 – JUNE 2005

These projects are newly underway and we will use them to continue to show council partners and watershed residents local examples of private stewardship that improves and protects water quality, wildlife habitat, and eco-system functions. Council projects cover a range of land use and project types and involve people with different backgrounds.

Eber Creek Fish Passage and Riparian Restoration Project: This project will replace two undersized culverts that currently block fish passage and cause sediment to wash into the creek during winter high flows. This will open up 1 1/2 stream miles of winter and spring spawning and rearing habitat for cutthroat trout. The landowner will also fence out cattle from Eber Creek, plant riparian shrubs along the east side of the creek where there is currently no shade, and provide off-channel watering for their cattle.

South Fork Ferguson Creek Stream and Riparian Enhancement: We are proposing to increase the stream's channel complexity and sinuosity by reducing the bank slope on the outside of bends. The re-sloped banks will then be planted with willows low on the slope and riparian trees higher on the bank. The reduced bank slope

and increased streamside vegetation will slow water down during high flows in the winter, provide better fish habitat and encourage the stream to meander. Riparian planting will provide more habitat for riparian dependent species and more wood for future recruitment into the stream.

Huhtanen/Scholler Riparian Restoration: This project is on a section of the upper Long Tom that floods regularly in the winter, has high water channels and old oxbows, and has good riparian coverage along most of its length. Extensive Himalayan blackberry thickets are the only significant negative factor affecting habitat. This is a phase 1 project in which we will remove 5 acres of blackberry and plant riparian trees in their place. Eventually these trees will shade out new blackberry plants.

Poodle Creek Fencing Phase II: These neighboring parcels are upstream and adjacent to the Phase I Poodle Creek Fencing project and will include fencing out cattle from a portion of Poodle Creek and fencing off a tributary and seasonal wetland. This will continue to enhance the riparian zone in the Poodle Creek watershed and improve water quality.

Historic Coyote Creek Restoration Phase 3: We will continue to restore native prairie and oak savanna on this 100-acre property. We will also re-connect two branches of Coyote Creek and provide fish passage from the lower Long Tom River. Ultimately this site will provide 100 acres of restored Willamette valley wet prairie, oak savanna, and bottomland hardwood riparian forest. It will also provide almost 1 1/2 miles of restored backwater habitat that will provide habitat for western pond turtle, red-legged frog, wood ducks, and numerous songbirds.

Ferguson Creek wood placement and riparian enhancement: We will place 10 – 20 logs in upper Ferguson Creek, remove non-native species in the riparian zone, and plant native species in their place. This project has excellent potential for providing cutthroat trout spawning habitat and summer refuge. It will also improve instream complexity, provide more shade to the creek, and be a source of future large wood recruitment.



Paul Clements (Oregon Dept. Forestry) and Andy and Mary Rae Thomson discuss the culvert replacement project on Eber Creek.



Five acres of blackberry will be removed around this oxbow pond on the Huhtanen property.

EDUCATION & OUTREACH

MONTHLY MEETINGS & TOURS

Our goal is to share knowledge and perspectives to build a common understanding about issues and conditions in the watershed. At each monthly council meeting our agenda includes a guest speaker or tour as well as business.

Outdoor tours have included: farms, forests, wetlands, urban creeks, a wastewater treatment plant, and restoration projects.

Guest speakers focus on adult education and have covered topics like: drinking water protection, water quality monitoring, forest practices, watershed analysis, consensus, fish species and habitat, groundwater, restoration, hydrology and water use, riparian and wetland conditions, landscape history, farming, stormwater and urban creek restoration, nutrients and polluted runoff.



FAIR BOOTHS

From the first year when volunteer Paul Reed built the watershed council booth for the Lane County Fair we've been a strong presence there, even winning the People's Choice Award in 2000 in conjunction with other councils! This effort takes about 50 volunteers who introduce visitors to watershed concepts and Councils. We've also had a presence at Eugene Celebrations, Earth Day Celebrations, and the Oregon Country Fair with a booth the first year, "factoid" signs at drinking water stations, and a now permanent interpretive station for the Indian Creek Restoration Project.

NEWS COLUMNS

Since early 2000, the West Lane News and Tri-County News have carried a monthly column for which the Long Tom Watershed Council submits factual articles directly related to the local area. *Volunteer editors recruit guest columnists for each one, covering a range of topics including: the history of the Long Tom River, Fern Ridge Reservoir and channelization of the lower river, macroinvertebrates, water quality monitoring, western pond turtles, instream flows, E. Coli, fish species, and even how the Long Tom River was formerly a tributary of the Siuslaw River and flowed to the Pacific!*

WORKSHOPS

The Council has conducted workshops on water quality training, proper functioning condition of riparian areas, farm conservation, working together in successful groups, stream restoration, fish and their habitat needs, and many other subjects. In upcoming years we will cover similar topics and hope to include new ones.



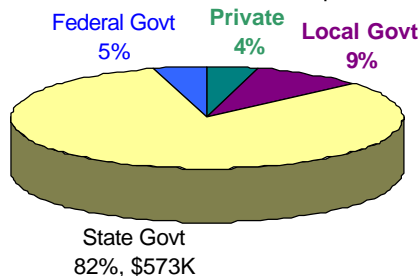
FUNDING & PARTNERS: 1998-2003

Two main ideas of the *Oregon Plan for Salmon and Watersheds* are that each watershed council will be locally driven by volunteerism and collaboration, and that seed money in grants from the state will be matched at least 25%. We have met and exceeded these expectations and this is due to the many people and organizations that care about the health of the Long Tom Watershed.

Private Industry and Organizations:

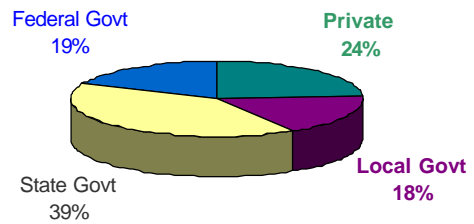
BiMart
C&L Farms
Coal Creek Logging
Delta Environmental Laboratory
Fern Ridge Community Action Network
Lane County Farm Bureau
Lane County Small Woodland Owners
Long Tom Industries
Monroe Telephone Company
Oregon Country Fair
Reerslev Farms, Inc.
Roseburg Forest Products
Safeway
Stroda Brothers Farm
SureCrop Farm Service
Swanson Superior Forest Products
The Nature Conservancy
Weyerhaeuser Corporation
Willamette Industries

Grants & Matching Cash Total cash 1998-2003: \$698K



Every dollar of state money spent in the Long Tom Watershed is matched by 1.3 dollars in private and federal contributions.

Total Sharing of All Costs Total value of work 1998-2003: \$1.6 mil



Total match to state grants is 61%

Local Municipalities & Schools:

Rachel Carson Center Churchill High School
City of Eugene
City of Junction City
City of Veneta
East Lane SWCD
Eugene Water and Electric Board
Lane Council of Governments
Lane County Fair

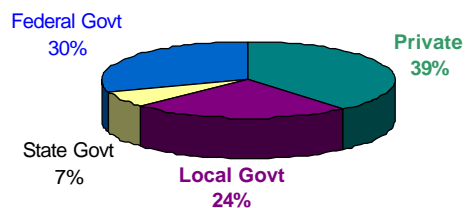
State Universities & Agencies:

OR Department of Environmental Quality
OR Department of Fish and Wildlife
OR Department of Forestry
Oregon State University
Oregon Watershed Enhancement Board
OSU Extension Service
University of Oregon

Federal Agencies:

US Army Corps of Engineers
US Bureau of Land Management
US Environmental Protection Agency
US Fish and Wildlife Service

Value of Matching Services & Donations Total 1998-2003: \$914K



Since 1998, council members have volunteered over 45 hours per week.

Thanks Everyone!

HOW YOU CAN BE OF HELP

To help continue the good work in your watershed please consider volunteering, donating funds and/or services, or recommending people or entities you think would be partners or supporters of the Council.

For this assistance, we extend our warmest thanks.



The Long Tom River joining the Willamette at Norwood Island

Dana Erickson
Long Tom Watershed Council
751 S. Danebo
Eugene, OR 97402
(541) 683-6578
<longtom@efn.org>