



LONG TOM WATERSHED COUNCIL

March 2005

Monthly Meeting

Tuesday, March 29, 6:30-9:00

Lower Long Tom Subbasin—Monroe Community Center

Agenda

- 6:30 SIGN IN, BROWSE INFO
AND SOCIALIZE
- 7:00 WELCOME &
INTRODUCTIONS
- 7:10 SENATE BILL 1010:
THE PRACTICAL ANSWERS
INTRODUCTION - *ROLF
ANDERSON*
- 7:20 PANEL DISCUSSION:
*MIKE POWERS, ODA
ERIC HORNING, BENTON SWCD
PAUL REED, EAST LANE SWCD*
- 8:10 BREAK
- 8:20 REPORTS
STEERING—*MIKE KESLING*
SUB-COMMITTEES—CHAIRPERSONS
STAFF
- 8:40 CORRESPONDENCE &
ANNOUNCEMENTS
- 9:00 ADJOURN



Water Quality Monitoring Volunteer,
Jack Detweiler, risks life and limb to measure the
conductivity from Amazon Creek at Danebo Rd.

IN THIS ISSUE:

- Meeting Backgrounder.....2-3**
- Watershed Announcements...4-5**
- Calendar.....6**
- Watershed Map.....7**
- Directions to meeting.....8**

Our Mission:

The Long Tom Watershed Council serves to improve water quality and watershed condition in the Long Tom River basin through education, consultation, and cooperation among all interests, using the collective wisdom and voluntary action of our community members.

Meeting Backgrounder

SB1010: The Practical Answers

March's Council Meeting will feature a panel discussion on the Agricultural Water Quality Program, more commonly known as Senate Bill 1010. The panel participants include: Mike Powers, Oregon Department of Agriculture; Eric Horning, Benton Soil & Water Conservation District; and, Paul Reed, East Lane Soil & Water Conservation District.

Information Provided by Mike Powers, ODA, and Dana Erickson, Council Coordinator

In 1993, Senate Bill 1010 created the Agricultural Water Quality Program at the Oregon Department of Agriculture (ODA). The legislation authorized ODA to develop Agricultural Water Quality Management Area Plans (Area Plans) to address water quality issues associated with agricultural activities, and also gave ODA the authority to adopt rules to implement the Area Plans. Senate Bill 502, passed in 1995, gave ODA the lead responsibility to regulate agriculture with respect to water quality.

The state Board of Agriculture provides ODA with the following policy direction to implement Senate Bill 1010 around the state:

- ◆ Develop goal-oriented approaches, not prescriptive approaches.
- ◆ Accommodate differences between geographic areas.
- ◆ Focus on voluntary initiative and approaches to plan goals.
- ◆ Provide clear enforcement provisions to be utilized where needed as a backstop.
- ◆ Meet agriculture's responsibilities for complying with multiple water quality laws.
- ◆ Proactively address agricultural water quality issues.
- ◆ Address fish habitat concerns related to water quality to provide the broadest possible protection for farmers and ranchers relative to both water quality and fish regulatory programs.

The Agriculture Water Quality Program is a means for agriculture to satisfy a variety of state and federal water quality mandates, including the Clean Water Act, Groundwater Management Act, Safe Drinking Water Act, Coastal Zone Management Act and National Estuary Program. Combined with voluntary and regulatory programs, it also helps meet agriculture's commitments in the Oregon Plan for Salmon and Watersheds.

From 1996 to early 2004, ODA developed 39 Area Plans to address agricultural water quality issues around Oregon. The Area Plans cover virtually all of the state except federal, reservation, and tribal trust lands. ODA adopted Agricultural Water Quality Management Areas Rules (Area Rules) to implement Area Plans in each of the 39 regions. The Agriculture Water Quality Program is now focused on working with the agricultural community, Soil and Water Conservation Districts (SWCDs) and other partners to implement the Area Plans and Rules.

Council Business

Local Implementation & Compliance

For the Long Tom Watershed, the local plan and rules are called the *Upper Willamette and Upper Siuslaw Agricultural Water Quality Management Plan*. The Long Tom Watershed Council has been assisting landowners with restoration project planning and funding since helping to complete the initial plan for this area in 2003. The Council helped by providing technical information and recommending council members to serve on the Local Advisory Team.

Using grant funding from ODA, OWEB, and other sources, both the Long Tom Watershed Council and East Lane SWCD work with the agricultural and rural communities and provide technical assistance, obtain financial support, and present educational opportunities. Besides project grant funding, programs available include the Conservation Reserve Enhancement Program (CREP), a state-federal partnership to provide financial incentives to growers to enhance and protect their streamside areas. Another good option is the Environmental Quality Incentive Program (EQUIP), a program of the USDA Natural Resources Conservation Service that often provides important water quality benefits.

The East Lane SWCD is the Local Management Agency that has the responsibility for making the plan and rules a success. In this role, the SWCD has assisted a landowner who received a complaint to help develop a plan that would alleviate the adverse conditions. ODA has been active in compliance work in this area since at least the year 2000, working with the Oregon Department of Environmental Quality (DEQ) before the Area Rules were in place. Up to the present, ODA has received three complaints and issued one Water Quality Advisory. Statewide, ODA has received 109 complaints and issued 39 Water Quality Advisories, six Letters of Warning, and three Notices of Noncompliance.

This year the SWCD will help in the review of the Area Plan, working with ODA and a local advisory team to review the plan and rules to date and determine if any changes are necessary. During the last planning effort, the Long Tom Watershed Council provided important technical information to the local team, as well as recommending growers for the team that had watershed experience. This partnership served all parties tremendously well.

Literature Available

Water Quality and Agriculture in Oregon

(ODA) This is the most basic brochure on SB 1010. It provides basic information on the SB 1010 programs to farmers, ranchers and the general public. Free.

Getting Ahead of the Curve with SB 1010

(ODA) More in-depth explanation of how individual farm plans fit in when there is not a SB 1010 plan in place versus when there is a SB 1010 in place. Free.

Early Action Guide

(ODA) Suggestions and guidance for SWCDs, watershed councils, and other natural resource groups who want to get a head start on watershed planning activities for agriculture that will be compatible with a SB 1010 plan adopted later. Free.

Small Acreage Soil & Water Educational Materials

(Washington County SWCD) 20 fact sheets and a full-color pamphlet on good land management practices and soil and water conservation. Nominal cost. Contact Washington County SWCD at (503) 648-3174.

Watershed Announcements

FORAGE & PASTURE MANAGEMENT



Pasture Management
Poisonous Plants

Grasses
Legumes
Grazing
Minerals
Fertilizers
Equipment
Renovation
New Varieties
Hay and Silage
Weed Control
& Much More!

- **10 Week Course. March 23–June 1, 2005**
- **To be held near Harrisburg**

A practical course on forages, grazing, pasture, hay, and silage! We'll cover plant growth, nutritional value, grazing techniques, fencing, and hay storage. You'll learn how to identify different grasses and legumes, and how to read soil tests and use fertilizers effectively. We will discuss new forage varieties, pasture renovation, intensive grazing, unusual forages, toxic plants, weed control, economic tips, etc. This is a relaxed class, with lots of active discussion, hands-on activities, and field trips. Open to all producers – beef cattle, sheep, horses, goats, alpacas, dairy, or any stock on pasture – beginner or veteran graziers, seed industry and feed suppliers, veterinarians, and anyone else interested in forages.

Time & Place: Wednesday Evenings
6:00 – 9:00 pm
First class begins on March 23
At Fisher Implement Company
near Harrisburg.
Directions upon registration.

Cost: \$90.00

How to Register: Mail in registration form below

For Further Information: call instructor **Woody Lane**
voice: 541-440-1926
fax: 541-440-1007
email: wlane@rosenet.net

Sponsors:

Ampac Seed Company	Barenbrug U.S.A.
DLF International Seeds	Pennington Seeds
Forage First/Croplan Genetics	Fisher Implements

About the Instructor:

Woody Lane is a livestock nutritionist & forage specialist from Roseburg who has taught many popular forage and nutrition workshops in Oregon and around the US. He earned a Ph.D. in livestock nutrition from Cornell University and works with ranchers in the US, Canada, and New Zealand. In the 1980s, he was the Extension Beef Cattle & Sheep Specialist in Wisconsin. He moved to Oregon in 1990 and runs his own livestock consulting business in Roseburg.

clip ✂ clip clip ✂ clip

Mail-in Registration Form

Name _____

Street/Ranch Address _____

City _____ State _____ Zip _____

☎ Telephone Number _____ Email _____

Send in your registration in advance! Space is limited!
Detailed information will be sent to you upon registration.

Make \$90 check payable to: Dr. Woody Lane

Mail this to: Lane Livestock Services
240 Crystal Springs Lane
Roseburg, OR 97470

Sponsors: Ampac Seed Company	Barenbrug U.S.A.
DLF International Seeds	Pennington Seeds
Forage First/Croplan Genetics	Fisher Implements

Watershed Announcements



SPRING IS COMING!



Are you excited for warmer weather? The plants and animals are too!



So what is the vernal equinox anyway? It's a few days away, so come learn, celebrate, and explore spring with us! We will build a nest & learn just why those



birds are singing. Why, we'll even look at some seeds (and eat some too!) and learn about the amazing germination process.



Of course we will look for signs of spring around the wetlands, so come prepared to be outside – rain or shine!



Meet at the West Eugene Wetlands Yurt on March 19th from 10:00-11:30 a.m.

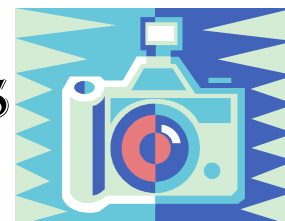


Ages 8-12, call Holly McRae at 683-6494 to register.



W.R.E.N. and the West Eugene Wetlands Partnership Present.....

SHOW ME THE WEST EUGENE WETLANDS COMMUNITY PHOTO EXHIBIT



In honor of American Wetlands Month, WREN and the West Eugene Wetlands Partnership are sponsoring their third annual community photo exhibit. **Show Me the West Eugene Wetlands** will hang at **Cafe Paradiso May 1 through May 28**. Submit your personal photo of the West Eugene Wetlands Saturday, April 23rd for a community exhibit. Selected photos will be on display at Café Paradiso through May, 2005. **THERE IS NO ENTRY FEE!** There will be a reception for the artists and interested parties Friday, May 6 in conjunction with the scheduled May First Friday ArtWalk. Please note the guidelines listed below:

- ◆ 1-2 pieces may be entered
- ◆ Subject matter should be located in the West Eugene Wetlands
- ◆ Work must be delivered matted or framed and ready-to-hang Saturday, April 23rd between noon and 4 p.m. to Cafe Paradiso, 115 W. Broadway
- ◆ Space permitting, all pieces will hang. If there is not enough room, any pieces not hung should be picked up Saturday, April 30. All artists will be notified by phone or email.
- ◆ Pieces in the show will need to be picked up at Cafe Paradiso on Saturday, May 28 between 1 and 4 p.m.
- ◆ Work will not be offered for sale, however, information for contacting individual artists will be made available upon request

Contact **Diantha Hull** for submission forms and more information at
345-1632.

Calendar



MARCH



SATURDAY

19

SPRING IS COMING!
West Eugene Wetlands
Education Program
(see p.5 for details)

TUESDAY

29

**Long Tom Watershed
Council Meeting**
Tuesday, March 29
6:30-9:00
Monroe Community Center
(see p.2 for backgrounder;
see back page for directions)



APRIL



THURSDAY

14

Long Tom Watershed Council
Steering Committee Meeting
6:30-9:00
Council Office

SATURDAY

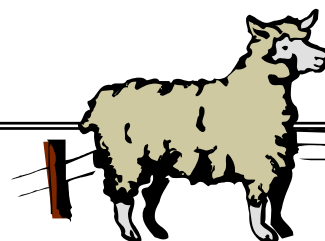
23

Show Me the West Eugene Wetlands
Community Photo Exhibit
Deadline for Photo Submissions
(see p. 5 for details)

TUESDAY

26

**Long Tom Watershed
Council Meeting**
Tuesday, April 26
6:30-9:00
Amazon Subbasin
(details in next month's
newsletter)



Forage & Pasture Management Course

This 10-week course covers a comprehensive range of topics - fertility, fertilizers, soils, forage species, grazing, fencing, riparian areas, hay and silage, nutritional value, minerals, weeds, poisonous plants, etc.

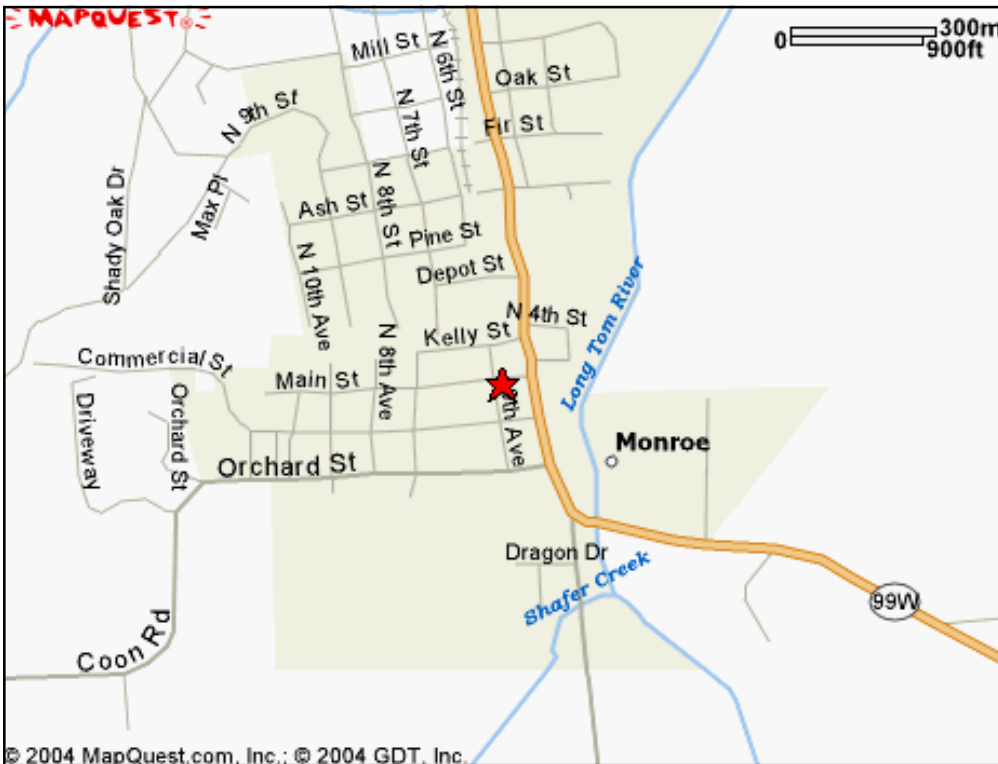
Students come away with solid appreciation for practical forage management, fertility, fertilizers, and forage-based nutrition. And they also get a good opportunity to learn about and appreciate the activities and products of the sponsors.

The class begins on March 23 and runs through June 1. *For details and registration see p. 8.*

Long Tom Watershed Council Newsletter

Long Tom Watershed Council
Phone: 683-6578 e-mail: coordinator@longtom.org
www.longtom.org
751 S. Danebo Avenue
Eugene, OR 97402

Directions to Monroe Community Center



Directions:

From Highway 99, turn west onto Main Street directly across from Terry's Gas and Repair in downtown Monroe. The Community Center is one block west of Highway 99 on Main Street, across the intersection from the Post Office.