



LONG TOM WATERSHED COUNCIL

Bimonthly watershed news and meeting notice

November 2007

www.longtom.org

Action Through Understanding

(541) 683-6578

COUNCIL MEETING

Tuesday, November 27th, 2007

6:30 p.m. - 8:45 p.m.

Veneta Community Center

(directions on back)



The Council removed this culvert on Bear Creek in a recent restoration project. The drop was too high for fish to jump on their way upstream.

AGENDA

- 6:30 pm** **Welcome and Roundtable Introductions**
- 6:45 pm** **Restoration Project Slideshow - Bear Creek Fish Passage & Stream Enhancement**
Kathy Noble, Project Landowner
- 7:10 pm** **Veneta TMDL Plan for local Water Quality Improvement**
Cities and others in the Willamette Basin have been asked to address temperature, bacteria, and mercury. Come learn about the City of Veneta's draft TMDL plan and action matrix.
Brian Issa, Veneta Community Services Director
Ric Ingham, City Administrator
Jared Rubin, Willamette TMDL Implementation Coordinator, DEQ
- 8:10 pm** **Western Oregon Plan Revisions (WOPR) Update**
Status and Q&A on proposed plan and EIS for the public lands managed by Eugene District BLM. Public comment period extended to January 11.
- 8:30 pm** **Steering Committee and Staff Reports**
Announcements

Save-the-date for the next Council Meeting:
Tuesday, January 29th
Junction City

Our Mission

The Long Tom Watershed Council serves to improve water quality and watershed condition in the Long Tom River basin through education, coordination, consultation, and cooperation among all interests, using the collective wisdom and voluntary action of our community members.

10th Annual Celebration & Meeting

MEETING SUMMARY

80 people signed into the membership list for the Annual Meeting and Celebration on October 11, 2007. 3 staff also attended. The meeting was held at the Eugene Yacht Club. The Business Meeting was called to order by Chair Jim Pendergrass at 8:15 p.m. Dinner, speakers, and watershed awards had already been enjoyed during the Celebration portion of the meeting. 7 people left before the business meeting began. The first item on the agenda was the Financial Report for the fiscal year ending June 30, 2007. Dana Erickson, Executive Director, presented the report.

The second item on the agenda was the election of new Directors to the Steering Committee to replace those who had completed their term and were rotating off. New candidates for Steering Committee were introduced – Kat Beal, Patti Little, Eric Wold and Brad Taylor. Kat and Patti were unable to attend in person. Additionally, two Directors were seeking re-election for 1-year terms – Will Bondioli and Tina Fenley. All candidates' biographies were included in the evening's program. Members were instructed on membership and voting. The Chair presented the slate of candidates and accepted a motion and second. **Motion: Elect the slate of candidates as presented to the Board of Directors.** The Chair called for the yes votes. There were 62 yes votes. The Chair called for no votes. There were 0 no votes however 11 people abstained and those are counted as no. With a supermajority in approval, the new Directors were successfully elected to the Board.

The Annual Meeting was adjourned at 8:40 pm.

Complete minutes available by contacting the Council office, 683-6578.
Please find a copy of the fiscal report printed in this newsletter.

THANKS TO EVERYONE WHO MADE THIS EVENT SUCCESSFUL!

Eugene Yacht Club Hosts: Ann & Aric Frydendall

SPEAKERS

Landowners: Hal & Kathy Noble, Landowner, Coyote Creek
Jane Bacchieri, Natural Resources Policy Advisor, Governor Ted Kulongoski
Representative Paul Holvey, State Legislature
Erik Petersen, Willamette Operations Manager, Army Corps of Engineers

VOLUNTEERS

Denise Gaudette,
Monique Ripley,
Jen Smith &
Jamie Stackley
from Umpqua Bank,
Steering Committee

SPONSORS

Benton-Lane Winery
Nixon Farms
Our Daily Bread
Pacific Ag Systems
Spring Creek Gardens, Inc.
~
City of Eugene
Oregon Country Fair
Roseburg Resources Co.
Stroda Brothers Farm
Sweet Cheeks Winery
Territorial Vineyards & Wine Co.

AUCTION DONORS

Ann's Hair Studio
Belknap Hot Springs
Bi-Mart
Peg Boulay & Bruce Newhouse
Cascade Mycological Society
Jenny Coleman
Creative Hands Merchantile
Diess Seed & Feed
Eugene Skin Diving
Tina Fenley
Fred Meyer Stores
Habitats, Inc.
Leslie Hanson
Hutch's Bicycle Store
Ric Ingham
Jerry's Home Improvement Center
Oregon River Sports
Passionflower Design
Jim & Chris Pendergrass R.E.I.
Silvan Ridge-Hinman Vineyards
Tony & Brenda Stroda
Sundance Natural Foods
Mike & Ann Thoele
Emma Thomsen
UO Regional Directors
Vinyard Ceramics
Leslie Wolgamott
WREN

Meeting Backgrounder

COUNCIL MEETING

Tuesday, November 27, 6:30 p.m. Veneta Community Center

Restoration Project Slide Show

Bear Creek Fish Passage & Riparian Enhancement Project

This site contained two fish passage barriers on Bear Creek, a major tributary in the Coyote Creek sub-watershed. One barrier was an undersized culvert (pictured on the front page), which blocked cutthroat trout from moving upstream because of high water velocity in the culvert and a 2 foot drop at its downstream end. The second barrier was an irrigation dam. Other issues on this stream segment included stream bed and bank erosion, insufficient shade, and streamside vegetation dominated by blackberry.

This month's slide show presentation will feature construction photos of the dam and culvert removals, bridge construction, rock weir installation, stream side terrace excavation, and native tree and shrub planting.



New bridge over Bear Creek. Banks were sloped back and covered with erosion fabric. Willows were planted along the edge of the channel and other native shrubs and trees higher on the banks.

Draft TMDL plan for Water Quality Improvement in Veneta area

TMDLs are documents written by the Department of Environmental Quality (DEQ) when specific pollutants in a water body exceed state standards. When the Willamette River TMDL was completed for local temperature, bacteria and mercury problems, many local towns were listed as Designated Management Agencies (DMAs) by the DEQ. Three of these DMAs are within the Long Tom Watershed – the cities of Veneta and Junction City, and Lane County. Lane Council of Governments has been working under two DEQ grants to assist these local governments in writing their TMDL Implementation Plans and has included the local watershed councils as part of the conversation and assistance. The Long Tom Watershed Council has played a small role in assisting the City of Veneta in creating a draft TMDL plan and matrix of actions— this plan will be presented for your review, questions and feedback.

DONOR RECOGNITION

Our Gratitude To
City of Veneta
For supporting the Education
Programs of the Council this year!

Welcome New Steering Committee Members!

The Council is pleased to welcome the following new Steering Committee members, elected for three-year terms at our Annual Meeting on October 11, 2007. A complete listing of our Steering Committee is provided on the page 9 of this newsletter; all bios are on the web.

Amazon: Eric Wold

Eric was born in Minnesota and came to Oregon for the outdoor activities. He earned a B.S. in Biology from Lewis and Clark College and worked as an Agroforestry Extension Agent in the Dominican Republic with the U.S. Peace Corps. He got an M.S. in Biology from the University of Missouri-St. Louis, and completed additional graduate work in entomology from OSU. He has worked as a Wildlife Biologist on the Willamette National Forest, and for the past 9 years with the City of Eugene, currently the Natural Resources Manager for the Parks and Open Space Division. Eric and his wife Brinda live in Eugene and have a son who just started kindergarten. Eric enjoys family-time, hiking, bicycling, canoeing, butterfly- and bird-watching, and golfing.

Amazon: Brad Taylor

Brad was born in Springfield, Oregon. He has had an interest in water resource issues since a young age and attended Humboldt State University for a B.S. in Environmental Resources Engineering with an emphasis in water quality and water treatment. He has worked for private consulting and local government in the region since 1995. Brad's job is Water Resource and System Planner for EWEB, while the rest of his time and energy goes into raising two young boys (Finley and Owen) with his wife Clare of 10 years. Spare time is spent protecting and enjoying landscapes and the water that runs across and through them. Professional interests include western water law and collaborative resource management - which makes this opportunity to serve with the Council very exciting to him.

Upper Long Tom: Patti Little

Patti lives with her family on a small farm and woodland property in Poodle Creek. She works at Lane Council of Governments in Senior and Disabled Services and has several areas of specialized interest and research in the field. She has degrees in Sociology and Anthropology, further education in Public Administration, and professional training in Farm Management and Real Estate. Patti participated in sub-watershed problem-solving with the Council on Poodle Creek in 2003, completed a restoration project, and is interested in learning and doing more about fish passage, well-water and stream quality.

At-Large: Kat Beal

Kat Beal was born in Portland, Oregon and has worked for a couple of decades for the US Army Corps of Engineers as a park ranger and wildlife biologist at the Willamette Valley Projects, which includes Fern Ridge Reservoir. She and her husband Jim have two boys; one attends Lane Community College and the other is a self-employed craftsman who actually supports himself. Kat's work with the Corps has primarily involved management and monitoring of sensitive species and their habitats in the Willamette Valley. She has recently moved her office to Fern Ridge from Lowell, and is happy to be back in the Long Tom. Kat served for several years on the Oregon Watershed Enhancement Board's Willamette grant review committee, and serves as an advisor to the Council's Technical Team.

**Would you like a presentation about the watershed and our Council?
Would your agency or organization like to talk about ideas for collaboration?**

Please call Dana Erickson at 683-6578

Council News

Fiscal Report: FY 2007 Year End Statement (July 1, 2006 - June 30, 2007)

Income	Monitoring	42,427.42
	Local Match	2,500.00
	Projects	302,653.89
	Local Match	10,304.00
	Council Support/Education	53,982.83
	Local Match	33,839.00
	TOTAL INCOME	445,707.14
Expenses	Monitoring	47,164.32
	Projects	292,817.03
	Council Support/Education	82,266.57
	TOTAL EXPENSES	422,247.92
Net Income		23,459.22
Beginning Balance		55,153.47
Cash Position End FY 07	Including Reserves of \$19K	78,612.69
Breakdown per Program	Monitoring	10%
	Projects	70%
	Council Support/Education	20%

Save the Date for our Volunteer Tree Planting Days:

- ☒ Sunday, December 9th, 9:00 a.m. - 1:30 p.m.
- ☒ Saturday, January 12th 9:00 a.m. - 1:30 p.m.
- ☒ Saturday, January 26th, 9:00 a.m. - 1:30 p.m.

Hot drinks, snacks and gloves provided!
Meet at the Council office. Contact Jenna at 683-6949
or jgarmon@longtom.org for more information.

Want to volunteer or intern with the Council?

Contact Jenna Garmon at:

(541) 683-6949 or

jgarmon@longtom.org

**What habitats do you have and could you enhance them?
What can you do about the health of your stream and riparian area?**

Call Cindy at 683-2983 to discuss project possibilities

Restoration Projects — an annual snapshot

Recently Completed Council Projects:

Sertic Fencing & Off-Channel Watering – installed 750' of riparian fencing and plantings; and off-channel water development in the Upper Long Tom sub-watershed.

Collay Fish Passage Improvement - provided access to winter fish rearing habitat.

Huhtanen-Scholler Riparian Restoration – removed 5 acres of blackberry and replaced with native species in Long Tom riparian floodplain.

Eber Creek Fish Passage & Riparian Enhancement – installed 4000' of riparian fencing & planting in the Ferguson sub-watershed; removed culvert to reconnect over 2 miles of cutthroat trout spawning and rearing habitat; and off-channel water development.

South Fork Ferguson Creek Stream & Riparian Restoration – installed 8 stream-side terraces & 1000' of riparian plantings.

Ferguson Creek Wood Placement & Riparian Enhancement – placed 20 pieces of large wood in stream; installed 1500' of riparian plantings.

Historic Coyote Creek Restoration Phase III – restored 8 acres of rare upland habitat .

Poodle Creek fencing/off-channel watering Phase 2 – installed 8700' riparian fencing/planting; off channel water development; pasture cross fencing; wetland enhancement (~1/4 acre).

Cox Butte Culverts Fish Passage Enhancement – provided fluvial & resident cutthroat trout access to Bear Creek sub-watershed.

Wintergreen Farms Riparian Fencing – installed riparian fencing and riparian plants to improve water quality & riparian habitat

Coyote Creek Riparian Fencing – installed fencing to protect existing high quality riparian habitat from livestock grazing.

In Progress Council Projects:

Inman Creek Riparian & Wetland Enhancement – plant riparian species, control non-native plants and enhance wetland habitat near Fern Ridge Reservoir.

Stroda Riparian Enhancement – plant riparian species to improve riparian zone & shade on lower Long Tom River.

Spencer Creek Fish Passage & Wetland Restoration – restore fish passage for cutthroat trout and riparian & wetland restoration along Spencer Creek tributaries

Wild Iris Ridge Upland Prairie Restoration, Phase 2 – restore 20+ acres of upland prairie in Amazon & Spencer sub-watersheds.

Gibson Grassed Waterway and Riparian Enhancement – enhance a grassed waterway and wetlands on agricultural stream to improve water quality and habitat.

Upper Poodle Creek Fish Passage & Riparian Enhancement – provide resident cutthroat access to prime spawning & rearing habitat, enhance water quality & riparian habitat.

Hunton Riparian & Wetland Enhancement – enhance wetland habitat on 1-acre marsh and establish ~ 5000' of riparian plantings in Lower Amazon sub-watershed.

Coyote Creek Fish Passage and Jordan Creek Riparian Restoration – remove culvert and construct bridge to reconnect 40+ miles of cutthroat trout spawning and rearing habitat; establish 8700' of riparian fencing & plantings.

Historic Coyote Creek – restore 8 acres of upland prairie; remove 2 miles of riparian blackberry; and plant trees.

Wild Iris Ridge Upland Prairie & Erosion Control, Phase 1 – eradicate & control invasive plant species; enhance oak habitat; introduce threatened and endangered plant species on city-owned land.

Ferguson Creek Riparian and Stream Enhancement – improve water quality & riparian habitat; restore instream wetlands

Owens Creek Fish Passage & Riparian Enhancement – remove dam to reconnect over 5 miles of cutthroat trout spawning & rearing habitat; remove invasive species, riparian enhancement.

Bear Creek Fish Passage & Stream Enhancement – remove dam and culvert to reconnect 5 miles of trout spawning and rearing habitat; remove invasive species, enhance riparian & instream habitat.

Recently Funded Council Projects:

Top Lake Riparian Enhancement – livestock fencing, off-channel watering, riparian planting, and invasive species control in the Coyote/Jordan Creek sub-watershed.

Wintergreen Farms Riparian Fencing – 1400' of fencing & riparian planting.

Watershed Work

Council Launches Fish Passage Barrier Assessment

Abundant and healthy fish populations in a watershed are a good sign that its rivers and streams are functioning to provide adequate habitat and water quality conditions. In the Long Tom, changes in the watershed environment have threatened some species of fish. One of our tasks as a council is to identify the most significant threats to sensitive fish in the watershed and focus our efforts on improving conditions and habitat for these species.

Despite the loss and degradation of historic stream habitat, cutthroat trout still inhabit most of the tributaries and main stem of the Long Tom River. However, dams and culverts often pose barriers to fish attempting to migrate upstream. Until now, fish passage has not been studied in a systematic and comprehensive manner in the Long Tom Watershed. The Council recently received a grant from the Oregon Watershed Enhancement Board to assess barriers to fish passage in the Long Tom Watershed, and identify priority projects for restoring fish passage.



The first step in this assessment is to assemble and map currently available fish passage data. The Council has been working with Lane and Benton Counties, the Bureau of Land Management, Oregon Department of Forestry, and Oregon Department of Fish and Wildlife (ODFW) to create a GIS database of current information on fish passage barriers.

Next, Council staff will work with our Technical Team and ODFW to identify road-stream crossings that could serve as barriers in high priority areas to survey in the field. Starting in January, the Council will be contacting landowners to seek permission to conduct surveys of these potential barriers. We will also be recruiting and training volunteers to help with culvert surveys. Survey teams will use current barrier assessment protocol to ensure compatibility with other regional culvert data. After we incorporate this new passage information into our GIS database, we will identify fish barrier removal priorities based on habitat quality, passability of other culverts in area, & life history needs of cutthroat trout.

Final products expected at the close of the project in December 2008 will include a map depicting this updated fish passage information, about 150 completed culvert surveys, and a final report outlining priority fish passage projects.

Do you have a dam or culvert on your property that we could survey? There is NO ramification to any landowner that has a culvert or dam that blocks fish passage—simply an opportunity to let us work alongside you to address it, bringing in grant funding and technical expertise. We can provide many references of satisfied landowners we have partnered with.

Would you like to volunteer to help survey, build the database, or help in other ways on this project? Please contact Jenna Garmon at 683-6949 or jgarmon@longtom.org.

Interested in other watershed councils in Oregon?

Contact the Network of Oregon Watershed Councils: www.oregonwatersheds.org

More Opportunities & Calendar

Council Events

Council Meeting

Restoration Slideshow, Veneta TMDL Plan & WOPR

Tuesday, November 27; 6:30 p.m.-8:45 p.m.

Veneta Community Center

Contact: Jenna Garmon, 683-6949;

jgarmon@longtom.org

Volunteer Tree Planting Day

Help plant trees to restore our local creeks!

Sunday, December 9: 9:00 a.m. - 1:30 p.m.

Contact: Jenna Garmon, 683-6949;

jgarmon@longtom.org

Volunteer Tree Planting Day

Help plant trees to restore our local creeks!

Saturday, January 12: 9:00 a.m. - 1:30 p.m.

Contact: Jenna Garmon, 683-6949;

jgarmon@longtom.org

Volunteer Tree Planting Day

Help plant trees to restore our local creeks!

Saturday, January 26: 9:00 a.m. - 1:30 p.m.

Contact: Jenna Garmon, 683-6949;

jgarmon@longtom.org

Council Meeting

Tuesday, January 29; 6:30 p.m.-8:45 p.m.

Junction City

Contact: Jenna Garmon, 683-6949;

jgarmon@longtom.org

Other Events

“Build a Birdhouse” Family Program

Winter is a wonderful time to look for birds in the West Eugene Wetlands! Learn about some common birds and build a birdhouse to take home.

Saturday, December 1: 10 a.m. - 12 a.m.

West Eugene Wetlands yurt, 751 S. Danebo Ave.

Contact Holly McRae at 683-6494.

Trail Rehabilitation on Spencer Butte

Help the Southeast Neighborhood Assoc. fence off illegal trails and replant them with a host of native forest plants. Be ready for challenging physical work on steep slopes.

Saturday, December 1: time TBA.

Meet at the main Spencer Butte parking lot.

Contact Matt McRae at 682-4850.

Amazon Creek Work Party

Participants will learn how to bring wetlands alive and into the classroom. Presented by WREN & Environmental Concern.

Saturday, December 8: 9 a.m. - 12 p.m.

West Eugene Wetlands Project Office,
751 S. Danebo Ave..

Contact Holly McRae at 683-6494.

Native Plant Nursery work parties

Variety of projects from seeding planting beds, digging bulbs, starting woody plants from cuttings, building raised beds, and more. There is a task for every volunteer interest and ability.

Ongoing every Friday from 1 p.m. - 4 p.m.

Meet at City of Eugene Native Plant Nursery in Alton Baker Park.

Contact Matt McRae at 682-4850.

Opportunities on the Web!

www.longtom.org

www.wewetlands.org

www.ortrout.org

**Do you have a neighbor or friend that might be interested in the Council?
Are you interested in volunteering?**

Please call Jenna Garmon at 683-6949

Our Watershed & Council



**Action
Through
Understanding**



**Steering
Committee**

Lower Long Tom

Jim Pendergrass,
Chair
Eric Freepons
Tony Stroda

Upper Long Tom

Ric Ingham,
Co-Vice Chair
Tina Fenley,
Treasurer
Patti Little

Amazon

Peg Boulay,
Co-Vice Chair
Brad Taylor
Eric Wold

At Large

Kat Beal
Will Bondioli
Ryan Collay
Rich Reeves
Corey Johnson,
Recording Secretary



Contact Us:

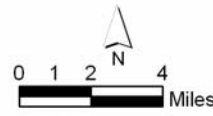
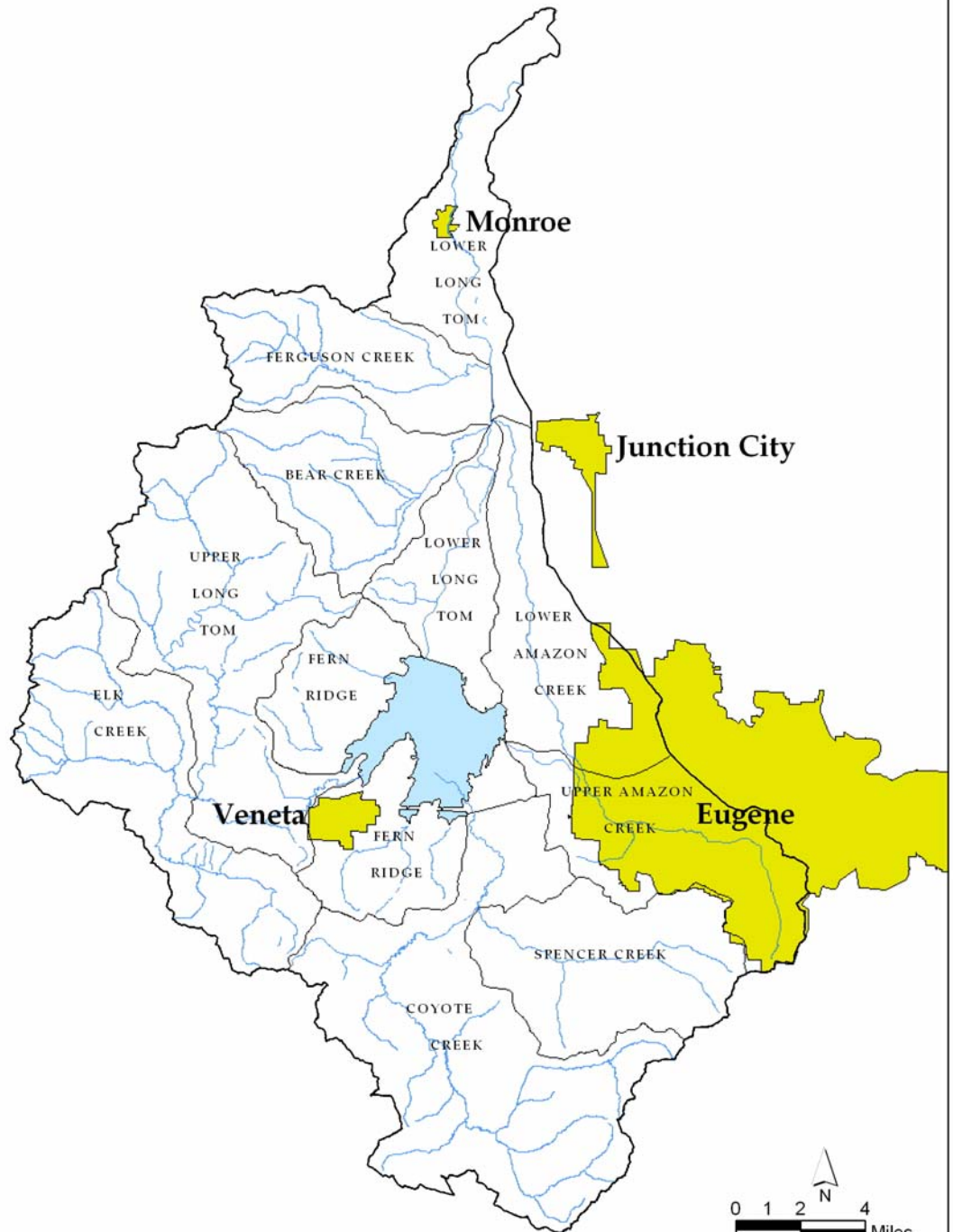
751 S. Danebo Ave.
Eugene, OR 97402

Phone: (541) 683-6578

Fax: (541) 683-6998

Web:
www.longtom.org

Long Tom Watershed Ten Major Subbasins



Source: Long Tom Watershed Council, Brian Issa 9/03

Staff

Projects and Monitoring
Cindy Thieman
(541) 683-2983

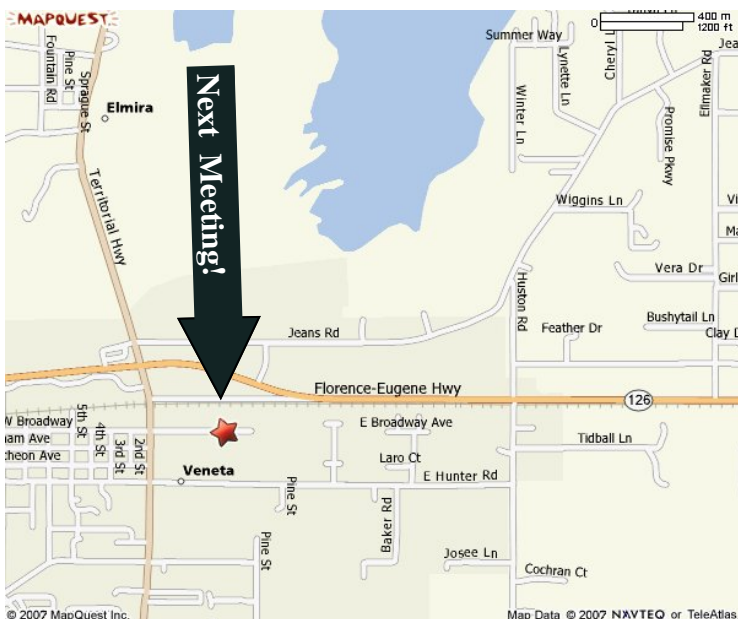
Coordinator/E.D.
Dana Erickson
(541) 683-6578

Stewardship & Outreach
Jenna Garmon
(541) 683-6949

Want to save your Council money on mailing costs?
Let us know you'd like an electronic version by emailing jgarmon@longtom.org!



Long Tom Watershed Council
Phone: 683-6578
e-mail: coordinator@longtom.org
www.longtom.org
751 S. Danebo Avenue



November Council Meeting
Tuesday, November 27th - 6:30 p.m.
Veneta Community Center
25192 E. Broadway, Veneta

Directions:

Head west on W. 11th Ave./Highway 126 towards Florence.

Turn south onto Territorial Hwy.

Turn left onto E. Broadway Ave. End at 25192 E. Broadway Ave.