



LONG TOM WATERSHED COUNCIL

Bimonthly watershed news and meeting notice

January 2008

www.longtom.org

Action Through Understanding

(541) 683-6578

COUNCIL MEETING

Tuesday, January 29th, 2008

6:30 p.m. - 8:15 p.m.

Monroe High School - Library
(directions on back)



A grassed waterway

AGENDA

6:30 pm **Welcome and Roundtable Introductions**

6:45 pm **Grassed Waterways - Different Approaches and Q & A**
Kevin Seifert, Linn Soil and Water Conservation District

Refreshment Break

7:45 pm **Project Presentation: Cox Butte Road Culverts**

8:00 pm **Steering Committee and Staff Reports**
Announcements

Save-the-date for the
next Council Meeting:
Tuesday, March 25th
Junction City

Our Mission

The Long Tom Watershed Council serves to improve water quality and watershed condition in the Long Tom River basin through education, coordination, consultation, and cooperation among all interests, using the collective wisdom and voluntary action of our community members.

Notes from Last Council Meeting

Notes

November 27th, 2007

Veneta Community Center

Three main agenda items were presented:

Restoration Project Slideshow - Bear Creek Fish Passage & Stream Enhancement

Kathy Noble, *Project Landowner* & Cindy Thieman, *Council staff*

Kathy and Cindy provided an overview of the fish passage and riparian restoration work done on Kathy & Hal Noble's land on Bear Creek, which drains into Ferguson Creek and has cutthroat trout. A culvert and dam were removed to restore fish passage and a bridge was installed. Terraces were created in the stream and the entire length was planted with native trees and shrubs. The presentation included a discussion of costs and challenges, landowner contributions, and observations on how the stream is functioning so far.



Veneta Total Maximum Daily Load (TMDL) Plan for local Water Quality Improvement

Brian Issa, *Community Services Director*, and Ric Ingham, *City Administrator, City of Veneta*
Jared Rubin, *Willamette TMDL Implementation Coordinator, Dept. of Environmental Quality*

Jared provided an overview of the local TMDL Implementation Plan process, a joint effort of Lane Council of Governments, Long Tom Watershed Council, and cities of Veneta & Eugene. TMDLs are documents written by the Department of Environmental Quality when specific pollutants in a water body exceed state standards. When the Willamette River TMDL was completed for local temperature, bacteria and mercury problems, many local towns were listed as Designated Management Agencies (DMAs) by the DEQ, including the cities of Veneta and Junction City, and Lane County. Lane Council of Governments has been working under two DEQ grants to assist these local governments in writing their TMDL Implementation Plans and has included the local watershed councils as part of the conversation and assistance. Jared discussed the three pollutants addressed by this plan: temperature, bacteria, and toxics (primarily mercury).

Brian discussed the City of Veneta's pollution reduction focus areas and shared their *TMDL Implementation Tracking Matrix*, outlining strategies and benchmarks for addressing temperature, bacteria and mercury through erosion control, education, storm water, wastewater and animal waste management, and restoration. Veneta is in the final stages of drafting its Plan and Matrix.

Western Oregon Plan Revisions (WOPR) Update, Bureau of Land Management

Bill Hatton, *Siuslaw Resource Area Field Manager*

Dave DeMoss, *Eugene District Forestry Lead & WOPR Interdisciplinary Team*

Bill and Dave discussed proposed updates to six western Oregon Resource Management Plans in areas covered by the Northwest Forest Plan. The revised plans will address 2.5 million acres of public lands and resources. BLM was charged by O&C Act of 1937 to have sustained yield management of 2,500,000 acres, however these harvest levels have not been met since passage of the Northwest Forest Plan. As a result of a lawsuit, BLM agreed to revise its practices, and is considering four alternative plans. BLM sought public comment on these alternatives, due January 11, 2008. Over 20,000 comments were received.

After consideration of the comments, BLM will issue a Proposed Resource Management Plan and Final Environmental Impact Statement, likely in September. Documents for each district and a revised Resource Management Plans will be released by the end of 2008.

Council Meeting Backgrounder

COUNCIL MEETING

Tuesday, January 29, 6:30 p.m. Monroe High School - Library

Grassed Waterways

Kevin Seifert, Linn Soil and Water Conservation District (SWCD)

We are pleased to have Kevin Seifert, with the Linn SWCD, speak at our Council meeting this month. He will give a slide show and talk on grassed waterway projects the District, NRCS, and OSU Extension have implemented with numerous farmers in Linn County over the past several years. These projects focus on reducing erosion, improving water quality, and in some cases even improving field drainage. Kevin will describe the variations in grassed waterways that fit different fields and crop types. Some of these can be farmed through, whereas others have perennial grass cover. He will also discuss species composition and management strategies that are compatible with certified grass seed fields. Finally, we will hear about which methods have been most successful and the various ways these projects can be funded.

Restoration Project Slide Show

Cox Butte Fish Passage Project

In June of 2001 the Council received a technical assistance grant of \$12,620 from the Oregon Watershed Enhancement Board (OWEB) to investigate fish passage through culverts located at Cox Butte Road and the Long Tom River. The OWEB grant covered the costs of survey and design work. The Army Corps of Engineers, a major project partner, contributed over \$15,000 of hydraulic modeling and technical assistance.



Cox Butte Road culverts

We investigated fish passage through two sets of culverts at the project site. The first set runs through the Long Tom levee and diverts water from the Long Tom River into a 3.5-mile segment of the historic Long Tom River. The second set is approximately 150 feet downstream of the levee culverts and goes under Cox Butte Road. The significance of the historic channel and providing passage at these sets of culverts is that they can allow fish to circumvent a 10-foot drop structure that blocks upstream fish passage on the mainstem of the Long Tom. The target species for fish passage are fluvial and resident cutthroat trout. Declines in water quality and the loss of habitat have led Oregon Department of Fish and Wildlife to designate Willamette cutthroat trout as a stock of concern. Despite the loss and degradation of historic stream habitat, cutthroat still inhabit most of the tributaries and mainstem of the Long Tom River. However, seasonal and perhaps year-round distribution is limited in some streams by decreased amounts of habitat, poor water quality, and barriers to fish passage.

Modeling results showed that the set of culverts under Cox Butte Road were a fish passage barrier during much of the winter. This happens because the water level at the inlet of the Cox Butte Road culverts is higher than at the outlet, creating a velocity barrier. To solve this problem, a team of two engineers designed a method to backwater the culverts by placing concrete road barriers four feet downstream of their outlet. Modeling results showed that backwatering the culverts slowed the velocity enough to allow cutthroat trout passage at most flows throughout the winter.

In 2006, the Council was awarded \$21,050 of Title II funding, administered by the Eugene District Resource Advisory Committee, to implement this project. Lane County, a key project partner, conducted the in-water work in October of 2007. This month's presentation will share slides of the restoration project and lessons learned.

Council News

BE A STEWARDSHIP VOLUNTEER!

The Long Tom Watershed Council invites you to help restore local creeks by planting native trees and shrubs.

Have fun, learn something new, get exercise, and do your part to improve the health of your watershed!

Planting native species will improve water quality, enhance habitat for wildlife and stabilize creek banks.



WHEN:

- ✦ Saturday, January 26th: 9am-1:30pm
- ✦ Saturday, February 9th: 9am-1:30pm
- ✦ Saturday, February 16th: 9am-1:30pm

WHERE:

Meet at the Council office: **751 S. Danebo Ave., Eugene** (please call for directions). We will carpool to the project sites.

All are Welcome!

IMPORTANT! Please RSVP with Jenna Garmon @ 683-6949 or jgarmon@longtom.org.

We will supply all tools, training, coffee and snacks.

Please bring warm clothes, boots, rain gear, drinking water and work gloves (if you have them).

STEERING COMMITTEE ELECTS NEW OFFICERS FOR 2007/08

The following officers were unanimously elected at our November Steering Committee Meeting:

President: *Jim Pendergrass*

Co-Vice-Presidents: *Peg Boulay and Ric Ingham*

Treasurer: *Tina Fenley*

Secretary (recording): *Corey Johnson* Secretary (corporate): *Dana Erickson*

**Would you like a presentation about the watershed and our Council?
Would your agency or organization like to talk about ideas for collaboration?**

Please call Dana Erickson at 683-6578

Council Announcements

Annual Tree Give Away

Winter is the ideal time of year to plant trees and shrubs, and is also time for our annual tree giveaway to **landowners who have riparian areas in need of trees**. This year we have two species to choose from: Western red cedar and grand fir. Planting one or more of these species along your stream or wetland will provide a number of benefits. They provide valuable shade, contribute woody material to the stream (an important link in a stream's food-chain), and supply wildlife with food and shelter.



Western red cedar

Western red cedar provides important wildlife habitat. When alive, cedars shades streams, keeping the water cool for fish and aquatic insects. Cedars provides nesting sites and cover for many species of birds and small mammals. Seeds are eaten by numerous species of birds and squirrels, and deer and elk browse seedlings. When a red cedar grows big and old, it develops heart rot, thus creating homes for owls and other species. Dead and fallen cedars provide the woody debris that sustains bacteria and insects, which, in turn, become food for other creatures. Downed trees anchor the soil, and their decaying wood provides rich nutrients, nursing the growth of new trees.

Grand fir provides cover and nesting sites for wildlife. Seeds are eaten by numerous birds, including nuthatches and chickadees, as well as squirrels and chipmunks. Many species nest in snags and fallen logs. Grand fir provides valuable shelter for deer and elk as well as squirrels, and chipmunks. Grouse eat grand fir needles.



Grand fir

Susan McDougall @
USDA-NRCS PLANTS Database

So which trees are right for your stream? **Western red cedar** will grow best in the mid to upper parts of the watershed. In its seedling stage, it does poorly in full sun so should be planted in shade to part shade. It tolerates moist to dry soils, although may require a few deep waterings in late summer to become established at dry sites.

Grand fir is an excellent species for restoration, due to the broad range of habitats to which it has adapted, and its drought-tolerance. Grand fir prefers deep, well-drained, alluvial soils, and full sun to partial shade. Although seedlings are shade-tolerant, older trees require full sun. Though a large tree, its deep, widespread roots make it windfirm.

Many thanks to
Roseburg Forest Products,
for donating the trees once again, and
Dave Cramsey
for coordinating with the Council!

If you have a streamside or wetland in need of trees please call Jenna at 683-6949 or email her at jgarmon@longtom.org. Trees will be available at the beginning of February so please call soon to reserve your trees.

**What habitats do you have and could you enhance them?
What can you do about the health of your stream and riparian area?**

Call Cindy at 683-2983 to discuss project possibilities

Watershed News

Caspian tern island at Fern Ridge Reservoir

By Kat Beal, Environmental Stewardship Supervisor, Army Corps of Engineers

The Corps of Engineers began construction recently on a 1-acre Caspian Tern nesting island in Fern Ridge Reservoir. The island will be constructed west of the Royal Avenue gate, south of Gibson Island, and will be surrounded by 4-5 feet of water in the spring and summer, when terns are breeding. The intent of the project is to provide habitat that will be attractive to Caspian terns for nesting, part of an effort to reduce tern predation on juvenile salmon in the Columbia, and to disperse the existing tern colony in the mouth of the Columbia to multiple sites around the northwest and California.

Nesting terns on the Columbia currently consume an estimated five million juvenile salmonids on their way to the ocean every year. Combined with structural and operational improvements in the Columbia hydropower system, reduction of avian predation is intended to aid in recovery of listed fish species by improving survival of juveniles.

The construction will continue through February – birders and walkers are encouraged to access Fern Ridge lake at other points to avoid heavy truck traffic. Complete environmental documentation including an EIS and the Fern Ridge EA can be found at: https://www.nwp.usace.army.mil/pm/e/en_plan_avian.asp.

Questions? Please call Kat Beal 541-461-2868.



Caspian terns

DONOR RECOGNITION

Our Gratitude To

Reerslev Farms, Inc.
C&L Farms
SureCrop Farm Service

For supporting the Council this year!

Want to volunteer or intern with the Council?

Contact Jenna Garmon at:

(541) 683-6949 or

jgarmon@longtom.org

**Do you have a neighbor or friend that might be interested in the Council?
Membership is as easy as expressing interest in watershed issues and Council activities.**

Please call Jenna Garmon at 683-6949

Bulletin Board

Eugene-Springfield Metro Waterways Study

Amazon Creek and Cedar Creek Workshops Scheduled



The U.S. Army Corps of Engineers, in partnership with the cities of Eugene and Springfield, Eugene Water & Electric Board, and Lane County, has developed a series of waterway enhancement proposals for Amazon Creek in the Eugene area and Cedar Creek in the Springfield area. The proposed enhancements are multi-objective and include improvements to habitat, water quality, physical condition, and recreation.

Public Workshops Scheduled

The public is encouraged to attend one or both of the upcoming workshops. The intent of these workshops is to describe the proposed waterway enhancements and to receive feedback. Both workshops begin at 6:00 P.M. with an overview presentation, followed by an opportunity to review and comment on specific proposals.

Amazon Creek Planning Area Workshop

Date: Wednesday, February 27, 6:00 P.M. to 8:00 P.M.
Location: Eugene Public Library, Bascom-Tykson Room

Cedar Creek Planning Area Workshop

Date: Thursday, February 28, 6:00 P.M. to 8:00 P.M.
Location: Springfield City Hall, Library Meeting Room

For more information on the study and workshops go to: www.metrowaterways.org.

Annual Meeting - East Lane Soil and Water Conservation District

You are invited to join the Board and Staff of East Lane Soil and Water Conservation District for their Annual Meeting on **Saturday, January 26** from 12:00 to 3:00pm in the EWEB Cafeteria, 500 East 4th Avenue, Eugene. Free lunch to the attendees will be served starting at 12:00, with reports and presentations commencing at 12:45. **Guest Speaker will be Mr. John Kauffman, Oregon Department of Energy, speaking about "Peak Oil"**. RSVP East Lane at 465-6443, ext 102 by January 18.

Interested in other watershed councils in Oregon?

Contact the Network of Oregon Watershed Councils: www.oregonwatersheds.org

Opportunities & Calendar

Council Events

Council Meeting

Grassed Waterways, and Cox Butte Presentation

Tuesday, January 29; 6:30 p.m.-8:15 p.m.

Monroe High School - Library

Contact: Jenna Garmon, 683-6949;

jgarmon@longtom.org

Volunteer Tree Planting Day

Help plant trees to restore our local creeks!

Saturday, January 26: 9:00 a.m. - 1:30 p.m.

Contact: Jenna Garmon, 683-6949;

jgarmon@longtom.org

Volunteer Tree Planting Day

Help plant trees to restore our local creeks!

Saturday, February 9: 9:00 a.m. - 1:30 p.m.

Contact: Jenna Garmon, 683-6949;

jgarmon@longtom.org

Volunteer Tree Planting Day

Help plant trees to restore our local creeks!

Saturday, February 16: 9:00 a.m. - 1:30 p.m.

Contact: Jenna Garmon, 683-6949;

jgarmon@longtom.org

Council Meeting

Tuesday, March 25; 6:30 p.m.-8:15 p.m.

Junction City

Contact: Jenna Garmon, 683-6949;

jgarmon@longtom.org

Other Events

WREN Wednesday Wetland Wanders

Take casual walks through West Eugene Wetlands sites. Wanders will occur each second and fourth Wednesday of the month, from 9-10 a.m. WREN will provide binoculars. Wear shoes that can get muddy.

Jan. 23 – Meadowlark Prairie Overlook

Feb. 13th – Checkermallow Access

Feb. 27th – End of Terry St.

March 12th – Tsanchiffin Walk

March 26th – End of Royal

Contact: 683-6494 or visit www.wewetlands.org

World Wetland Day Family Program

World Wetlands Day - Celebrate with WREN

Observe all the wonderful ways wetlands help our world. Participants will help us recreate a wetland habitat inside our educational yurt. Kids of all ages are welcome.

Saturday, February 2nd from 10 a.m. to noon.

Meet at the Wetland Project Office. Space is limited, registration is required. Call 683-6494.

Stream Team Tree Planting—Amazon Creek

Join neighbors of the Jefferson Westside and Friendly Neighborhoods to plant trees and shrubs along the banks of Amazon creek upstream of Polk St. Lane County Fairgrounds and the Stream Team will provide instruction, tools, gloves and refreshments.

Please come prepared for the weather.

Saturday January 19: 9a.m. - 12p.m.

Contact Matt McRae at 682-4850.

Nearby Nature Spring New Volunteer Orientation

Love nature? Enjoy kids? Learn all about leading school nature walks in Alton Baker Park this spring. No experience needed--free training provided in early April.

Wednesday, March 12: 6:30-8 pm

Tykeson Room at the Eugene Public Library.

Questions? Call Nearby Nature at 687-9699, email info@nearbynature.org, or see

www.nearbynature.org.

Other contacts for volunteer events:

Nearby Nature: 687-9699

WREN: 683-6494

City of Eugene, Volunteers in Parks: 682-4845

City of Eugene, Stream Team: 682-4850

Our Watershed & Council



**Action
Through
Understanding**



**Steering
Committee**

Lower Long Tom

Jim Pendergrass,
Chair
Eric Freepons
Tony Stroda

Upper Long Tom

Ric Ingham,
Co-Vice Chair
Tina Fenley,
Treasurer
Patti Little

Amazon

Peg Boulay,
Co-Vice Chair
Brad Taylor
Eric Wold

At Large

Kat Beal
Will Bondioli
Ryan Collay
Rich Reeves
Corey Johnson,
Recording Secretary



Contact Us:

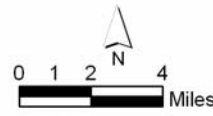
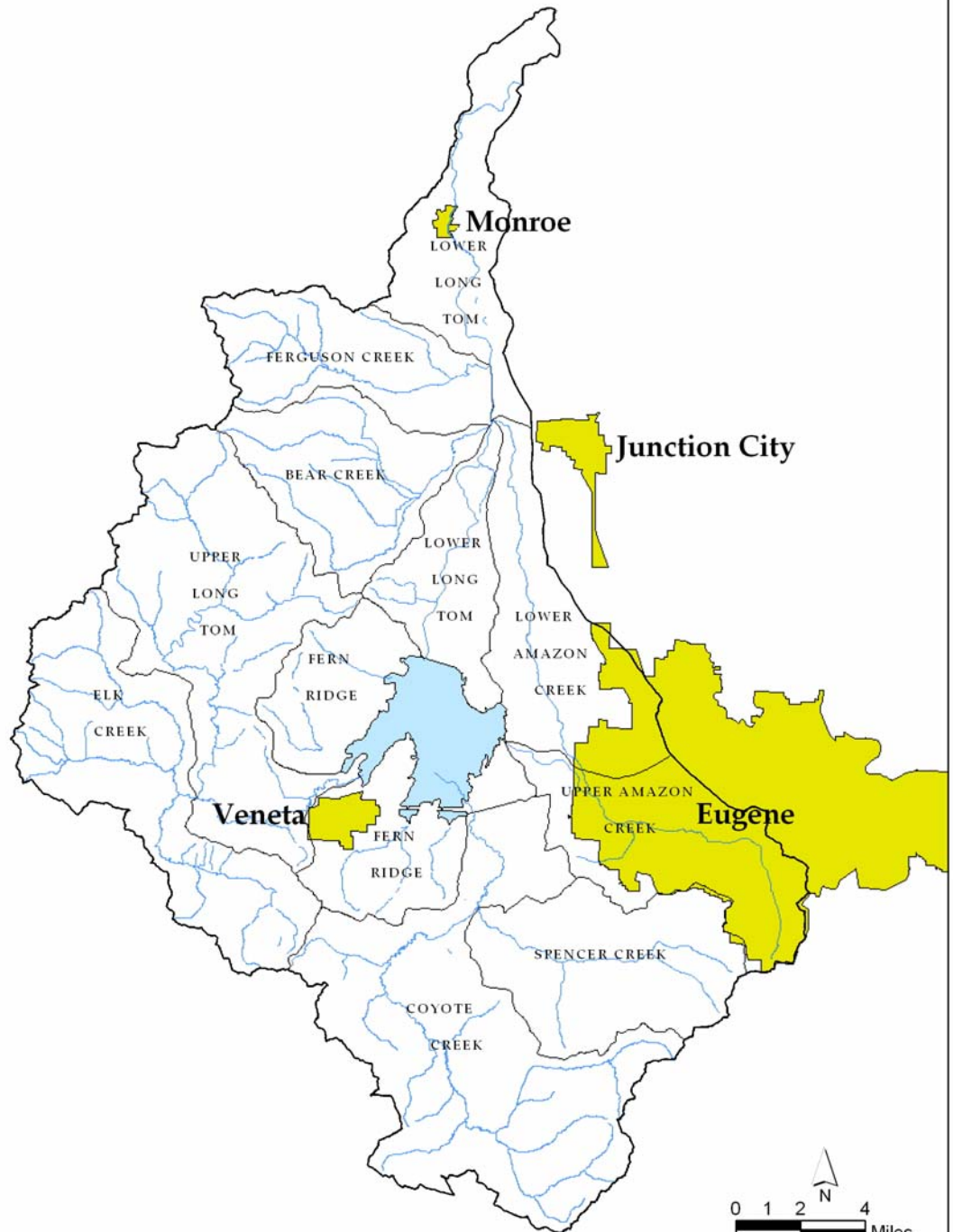
751 S. Danebo Ave.
Eugene, OR 97402

Phone: (541) 683-6578

Fax: (541) 683-6998

Web:
www.longtom.org

Long Tom Watershed Ten Major Subbasins



Source: Long Tom Watershed Council, Brian Issa 9/03

Staff

Projects and Monitoring
Cindy Thieman
(541) 683-2983

Coordinator/E.D.
Dana Erickson
(541) 683-6578

Stewardship & Outreach
Jenna Garmon
(541) 683-6949



Long Tom Watershed Council
Phone: 683-6578
e-mail: coordinator@longtom.org
www.longtom.org
751 S. Danebo Avenue

**January Council Meeting
Tuesday, January 29th - 6:30 p.m.
Monroe High School - Library
365 North 5th St.
Monroe**

Directions:

Monroe High School is on the north end of Monroe on Hwy 99W, on the east side of the street.

You can't miss it!

The Library is in the main building - follow the signs.

