



LONG TOM WATERSHED COUNCIL
Bimonthly watershed news and meeting notice
SEPTEMBER 2008

**Action
Through
Understanding**

11th Annual Meeting & Celebration

**Stroda Brothers' Farm
On the Long Tom River in Monroe**

**Saturday, September 20th, 2008
1:00 p.m. - 4:00 p.m.**

**Cost: \$10/person + bring a side
dish and your beverage
RSVP and send payment
by September 10th
See inside for details!**

RSVP Required.

Directions and Carpool Option on last page.



Over 70 guests attended the 2007 Annual Celebration.

Featured Folks at 2008 event

Bob Stroda and Jupe Holm, Farmers

State Representative Brian Boquist

Greg Taylor, Fish Biologist,
Army Corps of Engineers

Gary Galovich, Western Oregon
Warmwater Fish Biologist,
Oregon Dept. of Fish & Wildlife

Featuring:

- ◆ Barbeque and Potluck
- ◆ Reflections on local agricultural history
- ◆ Perspectives on fish in the watershed
- ◆ Silent Auction for Watershed Experiences!
- ◆ Election of new Board Members
- ◆ Watershed Awards and Appreciation
- ◆ Hayride and tour of locally owned farm

Inside:

- 2: How do fish get around in the Long Tom
- 3: Sneak Peak at Silent Auction items
- 4: 2008 Snapshot of Restoration Projects
- 5: Celebration Agenda & RSVP form
- 6: Giving Thanks
- 7: Support the Council
+more

The Long Tom Watershed Council serves to improve water quality and watershed condition in the Long Tom River basin through education, coordination, consultation, and cooperation among all interests, using the collective wisdom and voluntary action of our community members.

751 S. Danebo Ave., Eugene, OR 97402 · Phone: (541) 683-6578 · Fax: (541) 683-6993

www.longtom.org

How do fish get around in this watershed?

Fish Passage in the Long Tom Watershed

Providing passage for fish where road crossings or other instream structures might block it is one of the most important things we can do to improve the viability of native fish populations in our watershed. In the Long Tom Watershed, fluvial and resident cutthroat trout (see side bar) are the primary target when we look to provide better passage up and downstream, but many other aquatic species benefit from enhancing fish passage, including Brook and Pacific lamprey, sculpin, Pacific giant salamander, and red-legged frog.

Year-round passage is important because trout utilize different habitats in a stream or watershed at each stage in their life cycle. In the summer, they spend their time lower in a watershed or stream where food is more abundant. The exception to this is when water temperature is too warm, forcing them to move farther upstream where temperatures are generally cooler. In the fall and winter, they move upstream to spawn in gravel-bottomed streams. After spawning, fluvial trout move back downstream or out of the watershed. When fish encounter passage barriers (like a culvert at a road crossing) that prevent them getting upstream to reaching spawning gravels or sufficiently cool stream temperatures, the local population may disappear. In the case of fluvial cutthroat trout, we suspect that far fewer migrate into the Long Tom River from the Willamette River because of the dams that exist on the lower Long Tom.

Fish passage projects typically remedy an undersized culvert that has a drop greater than 6" at its outlet and/or velocities that are too high. However, both small and large dams exist across the watershed, and they also create passage barriers. These aren't inherently illegal, and landowners have many options in addressing them if they wish to. One that we will see at this year's annual meeting is on the Long Tom River at Stroda Farms.

Fish Passage Design for the Long Tom River at Stroda's

From the early 1940s through the 1960s, the Corps of Engineers modified the channel of the Long Tom River starting at Fern Ridge Dam and continuing downstream to the mouth at Long Tom Slough. Modifications to the Long Tom consisted of channelizing the river, cutting-off large meanders, building levees on both banks, and adding three drop-structures or "check dams" along the river to reduce velocities and scour of the banks and stream bed.

A top priority for the Council is to work with the Corps of Engineers and neighboring landowners to develop solutions to provide fish passage over or around these dams. All of these drop structures are impassable to cutthroat trout, although the Monroe Dam has a fish ladder that may make the dam passable at some flows. Also, the Council recently completed a project to provide passage around the Ferguson Drop Structure via a historic section of the Long Tom River.

(continued on next page)

Fluvial vs. Resident Cutthroat Trout

Resident trout stay in the same perennial stream their whole life, moving up to 1 or 2 miles along their stream to find food, refuge, and spawning habitat. An adult may reach 8" long.

Fluvial trout move between different stream systems. A classic example in our Watershed are trout that spend the summer in the Willamette River and move into the Long Tom to spawn in the fall and winter if they can reach suitable spawning habitat in the upper reaches of Bear and Ferguson Creek. (Fish passage is not provided at Fern Ridge Dam, so fluvial trout cannot ridge habitat above the reservoir.) It is also likely that fluvial trout spend the summer in cooler parts of the Long Tom River and Coyote Creek above Fern Ridge. In the fall and winter, these fish move into gravel bearing streams in the upper reaches of Coyote, Poodle, Long Tom, and Elk Creek. Fluvial trout can reach 12" – 16" in size.

(continued from previous page)

The so-called “Stroda” Drop Structure is located at River Mile 9.6 and is between the Ferguson and Monroe drop structures. This structure is impassable to juvenile cutthroat trout at all times, and at most flows for adult trout, because of high velocities and low depths of flow at the crest and down the spillway face. The Corps of Engineers, Oregon Department of Fish & Wildlife, Long Tom Watershed Council, and Stroda Family have discussed and done preliminary investigations of several fish passage designs that could allow cutthroat trout to either circumvent the drop structure or pass over it. These include a fish ladder at the dam, a series of weirs below the dam, or a fishway around the dam. In 2007, the Council applied for and received a technical assistance grant from the Oregon Watershed Enhancement Board to design a passage solution for the Stroda Drop structure.

Fish Barrier Inventory

With grant funding from the Oregon Watershed Enhancement Board, the Council is working to assess barriers to fish passage throughout the watershed. We will be surveying road crossings and dams next summer in selected sub-watersheds, which will enable us to identify priority projects for restoring passage for cutthroat trout and other aquatic species in the Long Tom Watershed. The Council has completed other surveys before with the help of landowners and residents in the watershed, and any support and background knowledge you can provide about the Council and its good reputation will be helpful next summer when we’re active out there.

Celebration Details—Auction Sneak Preview

Take home great stuff and support the Council

Get ready to bid on exciting auction items at our Annual Celebration! Bring your checkbook or credit card so you don’t miss out. Here’s a sneak preview:



Wild Mushroom Madness - guided mushroom foray led by ecologists Bruce Newhouse and Peg Boulay, a mushroom basket to carry your treasures, a mushroom field guide, mushroom cookbook, and a one-year individual membership to the Cascade Mycological Society

McKenzie Rafting Adventure - join Jim and Kat Beal to glide down the river or dive into the rapids with three of your friends, stopping along the way for a riverside picnic

Wild About Wildflowers - 3 hour Wildflower Walk led by Jean Jancaitis, picnic lunch, and wildflower field guide

Feathers at Fern Ridge - 3 hour guided Bird Walk led by Dan and Barbara Gleason, and “Birds! From the Inside Out” an introductory textbook written and illustrated by the guides

Sailing Cruise and Picnic - Let Lynne Boone take you and up to 5 friends on a relaxing outing and picnic on the scenic water of Fern Ridge Lake

Winter Green Farm CSA - Enjoy a farm fresh picnic lunch with three of your friends—learn where your food comes from and why people choose to eat locally and belong to a Community Supported Agriculture (CSA) farm

Gift certificates, art by local artists, and more!

Restoration Projects in 2008— a Snapshot

Recently Completed Council Projects:

Hunton Riparian & Wetland Enhancement – enhance wetland habitat on 1-acre marsh and establish ~ 5,000 feet of riparian plantings in Lower Amazon sub-watershed.

Coyote Creek Fish Passage and Jordan Creek Riparian Restoration – remove culvert and construct bridge to reconnect 40+ miles of cutthroat trout spawning and rearing habitat; establish 8700' of riparian fencing & plantings.

Wild Iris Ridge Upland Prairie & Erosion Control, Phase 1 – invasive plant species eradication & control; enhancement of oak habitat; introduction of native grasses and flowers.

Ferguson Creek Riparian and Stream Enhancement – improve water quality & riparian habitat along ¾ mile of lower Ferguson Creek.

Owens Creek Fish Passage & Riparian Enhancement – remove dam to reconnect over 5 miles of cutthroat trout spawning & rearing habitat; remove invasive species, riparian enhancement.

Bear Creek Fish Passage & Stream Enhancement – remove dam & culvert to reconnect 5 miles of trout spawning and rearing habitat; invasive species removal, riparian enhancement, instream habitat enhancement.

In Progress Council Projects:

Spencer Creek Fish Passage Restoration – restore fish passage for cutthroat trout along a Spencer Creek tributary.

Wild Iris Ridge Upland Prairie Restoration, Phase 2 – restore 40+ acres of upland prairie and oak savanna

Stroda Riparian Enhancement – plant riparian species to improve riparian zone & shade on Long Tom River.

Gibson Grassed Waterway and Riparian Enhancement – construct a grassed waterway on a seasonal agricultural drainage to improve water quality and enhance riparian habitat around a pond.

Upper Poodle Creek Fish Passage & Riparian Enhancement – provide cutthroat access to 1½ miles prime spawning & rearing habitat, install livestock exclusion fencing & enhance over ½ mile riparian habitat.

Historic Coyote Creek – 8 acres of upland prairie restoration and 2 miles of riparian blackberry removal and tree planting.

Stroda Grassed Waterway- installation of a grassed waterway on a seasonal drainage running through a Christmas tree farm.

Inman Creek Riparian & Wetland Enhancement – plant riparian species, control non-native plants and enhanced wetland habitat near Fern Ridge Reservoir.

Top Lake Riparian Enhancement – livestock fencing, off-channel watering, riparian planting, and invasive species control along upper Jordan Creek.

Murphy Riparian & Wetland Restoration – riparian restoration; wetland restoration; stream restoration along Spencer Creek tributary.

Winter Green Farm Wetland & Savanna Restoration-creation of amphibian breeding habitat, riparian enhancement, and oak savanna restoration adjacent to Poodle Creek

Atkinson Coyote Creek Tributary Enhancement- restoration of instream and riparian habitat on a small working farm.

Long Tom Fish Passage Design (Technical Assistance)- fish passage design for the “Stroda” Drop Structure on Long Tom River upstream from Monroe

McFadden Riparian and Stream Enhancement- riparian enhancement, off-channel water development, and livestock exclusion fencing on 1/3 mile of Owens Creek. Instream enhancement includes the addition of 60 pieces of large wood to stream.

Recently Funded Council Projects:

Harden-Hansen Riparian Restoration- control of non-native blackberry and planting of native shrubs along tributary to Spencer Creek.

**Would you like a presentation about the watershed and our Council?
Would your agency or organization like to talk about ideas for collaboration?**

Please call Dana Erickson at 683-6578

Celebration Details

Long Tom Watershed Council's 11th Annual Meeting & Celebration

September 20th, 2008

1:00 - 4:00 pm

Stroda Brothers' Farm

On the banks of the Long Tom

**RSVP REQUIRED by
SEPTEMBER 10th**

BBQ Lamb & Chicken with assorted

Potluck Sides, Salads & Desserts

Please bring a dish, beverage, and
your own blanket or chairs for
this fun, family-friendly event!

Draft Agenda

- 1:00 Choose a Farm Tour and/or Technical Tour –
How to address fish passage at major barriers
Greg Taylor, Jim Crain, Karen Hans
- 2:00 Greet your neighbor, and enjoy live music
- 2:15 Welcome to the Farm – Tony Stroda
Potluck Begins
- 2:45 Perspectives on the Long Tom River Watershed
Guest Speakers: Local agricultural history of the area,
native fish and how they get around the rivers and
streams of the Long Tom basin
- 3:25 Council Highlights from 2008
- 3:35 Watershed Awards and Leadership Appreciation
- 3:50 Elections, then formally adjourn to...
- 4:00 History on the Haybales

Please contact Event Coordinator Christy Yost at 683-6949, or email cyost@longtom.org with any questions.

Long Tom Watershed Council Annual Meeting Reservation Form



Please RSVP to the Council office by Friday, September 10th

Name: _____ Phone: _____

Organization: _____ E-mail: _____

Would you prefer a vegetarian meal? If so, how many? _____
Y N

Number of adults for dinner _____ X \$10.00 each = \$ _____ ENCLOSED

What dish will you bring (A-M side or salad; N-Z dessert) _____

Please make check payable to Long Tom Watershed Council (LTWC) and mail to:
751 South Danebo Avenue, Eugene, OR 97402

Questions? Please call Christy Yost at 683-6949 or cyost@longtom.org.

**What habitats do you have and could you enhance them?
What can you do about the health of your stream and riparian area?**

Call Cindy at 683-2983 to discuss project possibilities

Giving Thanks

Watershed Awards

The Council is pleased to honor the following people and organizations at our Annual Meeting & Celebration!

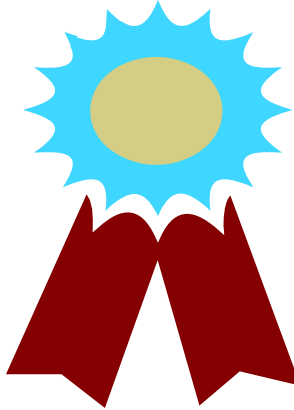
Sustaining Entity: Private
Swanson Group, Inc.

Sustaining Entity: Public
US Fish & Wildlife Service,
Finley Refuge

Project Landowner
Deborah & Alan Mattson

Outstanding Volunteers
Katie McKendrick, Rebecca Flitcroft
(Pacific Northwest Research Station)

Project Contractor
Scott Wright, Engineer



Leadership Awards:

An enduring thank you to our outgoing Steering members for their dedication and service to the Council:

Will Bondioli

Tina Fenley

Corey Johnson

Eric Freepons

Ryan Collay

~ **Websites of Interest** ~

www.longtom.org
www.wewetlands.org
www.ortrout.org

Pacific Lowland Pollinators a critical link in our food systems.

Abundant and healthy populations of pollinators can improve fruit set and quality, and increase fruit size. In farming situations this increases production per acre. In the wild, biodiversity increases and wildlife food sources increase. In the Pacific Lowlands, including Oregon and Washington, pollinator populations consist of bats, bees, beetles, birds, butterflies, flies, and moths.

To find out more information about local pollinators and selecting plants please see 'Selecting Plants for Pollinators— A Regional Guide for Farmers, Land Managers, and Gardeners in the Pacific Lowland Mixed Forrest Province' at www.pollinator.org/pdfs/PacificLowland.rx6.pdf.

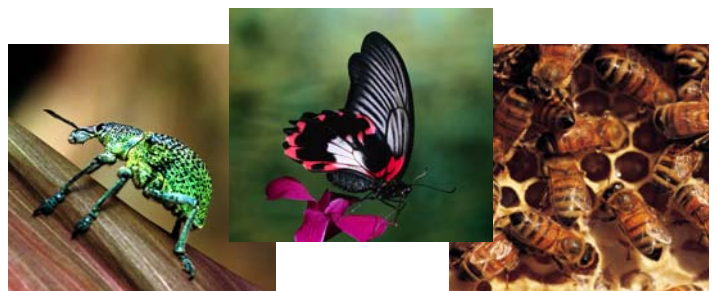
FUNDING PARTNER RECOGNITION

Our Gratitude To

**Oregon Watershed
Enhancement Board**

For supporting the Council this year!

Special thanks to Wendy Hudson for her work in partnering with the Council



Support the Council

Support the work of the Long Tom Watershed Council!

The watershed council model is based on building a shared community approach to solving natural resource issues. The success of this approach depends on community involvement and support. We hope this will include your help. There are many ways to support the Council's work - volunteering, attending meetings and tours, and equally as crucial- donating funds.

The Council has a 10-year history working with watershed residents improve water quality and habitat through learning and action. We just hit a milestone of 30 completed restoration projects. Since most of the land in our watershed is privately owned, much of this education and restoration work involves developing relationships with private landowners and supporting their efforts to be stewards of their land. In addition to the watershed benefits, this work also contributes to our local economy - over 90% of the restoration grant dollars that the Council brings in are spent in this county - on local contractors, suppliers, businesses, and employees.

The Council does more than restoration – we are the only entity that monitors water quality and stream health throughout the basin, and we share watershed information with the community. Council meetings, tours, and discussions stimulate learning and problem-solving. We also partner with local agencies and organizations to address the crucial, big picture issues in our watershed that no one entity can tackle alone.

With your support, we can continue to enhance and restore the ecology of our watershed that sustain our quality of life and create partnerships that cross all boundaries.



Yes, I'd love to help with a tax-deductible donation to the Long Tom Watershed Council to improve water quality and the watershed in my community!

Your name: _____

Mailing address: _____

City: _____ State: _____ Zip Code: _____

*Phone: _____ *Email: _____

Note: The Council will not release your personal information to other organizations.

Check here if you'd like to receive our newsletter and other announcements via email

Amount Enclosed: \$ _____

Please make your donation check payable to **Long Tom Watershed Council**. Send completed form and tax-deductible donation to:

Long Tom Watershed Council
751 S. Danebo Ave.
Eugene, OR 97402

THANK YOU!

Questions?
Dana Erickson
Executive Director
683-6578



Opportunities & Calendar

Council Events

Steering Committee Meeting

Thursday, September 11; 6:00 p.m.-8:00 p.m.
Contact: Dana Erickson, 683-6578
coordinator@longtom.org

2008 Annual Meeting & Celebration* Saturday, September 20 : 1:00 p.m. -4:00 p.m. Stroda Brothers' Farm, on the Long Tom River in Monroe

Contact: Christy Yost, 683-6949 or
cyost@longtom.org
*RSVP Required

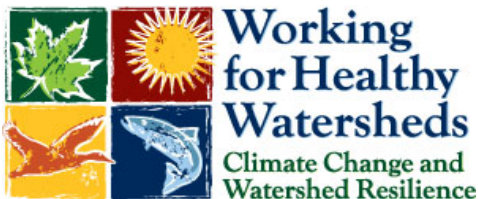
Council Meeting

Tuesday, November 25; 6:30 p.m.-8:15 p.m.
Contact: Christy Yost, 683-6949;
cyost@longtom.org

2008 OWEB Biennial Conference November 5-7

Eugene Hilton & Conference Center
1-541-342-2000 or Toll Free: 800-937-6660

Make room reservations before October 3, 2008. Mention the OWEB conference to receive the prevailing government room rate - currently \$92 single; \$107 double. More people, up to four per room, may be added for \$15 per person. For more information see OWEB's website www.oregon.gov/OWEB



Other Events

Native American Wetland Cultures Day Saturday, September 6: 10 a.m.-4p.m.

Kalapuya Elder, Esther Stutzman, is organizing a day of activities for all ages of the general public that includes story-telling, basket-making demonstrations, drumming, dancing, a display and discussion of the building of the traditional Kalapuya canoe, and more. The event is free and open to the public. Bring a picnic lunch. For more information call 683-6494. Meet at West Eugene Wetlands Project Office, 751 S. Danebo Ave.

Wetland Wander Tuesday, September 9: 9-10 a.m.

Wanders are casual walks through the West Eugene Wetlands. WREN will provide binoculars. Call 683-6494 for more information.

Note: starting in September, Wetland Wanders will now be on the 2nd Tuesday of each month, from 9 to 10 a.m. Checkermallow Access.

National Public Lands Day 2008 Saturday, September 27: 9-11:30 a.m.

Volunteers are needed to plant bulbs, remove invasive species, and help clean up Amazon Creek in celebration of National Public Lands Day. National Public Lands Day is the nation's largest hands-on volunteer effort to improve and enhance the public lands Americans enjoy. Gloves and tools will be provided. Volunteers will be rewarded with a free poster, t-shirt, coupon for admission to a national park, a lunch, and the satisfaction of working to improve our public lands alongside fellow community members. Several organizations are coordinating this year's event: the Bureau of Land Management, WREN, Sierra Club Many Rivers Group, Eugene Stream Team, West Eugene Wetlands Partnership, and Eugene REI.

Contacts for volunteer opportunities:

Nearby Nature: 687-9699
WREN: 683-6494

City of Eugene, Volunteers in Parks: 682-4845
City of Eugene, Stream Team: 682-4850

Our Watershed & Council



**Action
Through
Understanding**



**Steering
Committee**

Lower Long Tom

Jim Pendergrass,
Chair
Eric Freepons,
Recording Secretary
Tony Stroda

Upper Long Tom

Ric Ingham,
Co-Vice Chair
Tina Fenley,
Treasurer
Patti Little

Amazon

Peg Boulay,
Co-Vice Chair
Brad Taylor
Eric Wold

At Large

Kat Beal
Will Bondioli
Ryan Collay
Rich Reeves
Corey Johnson



Contact Us:

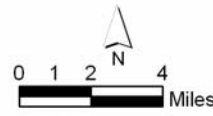
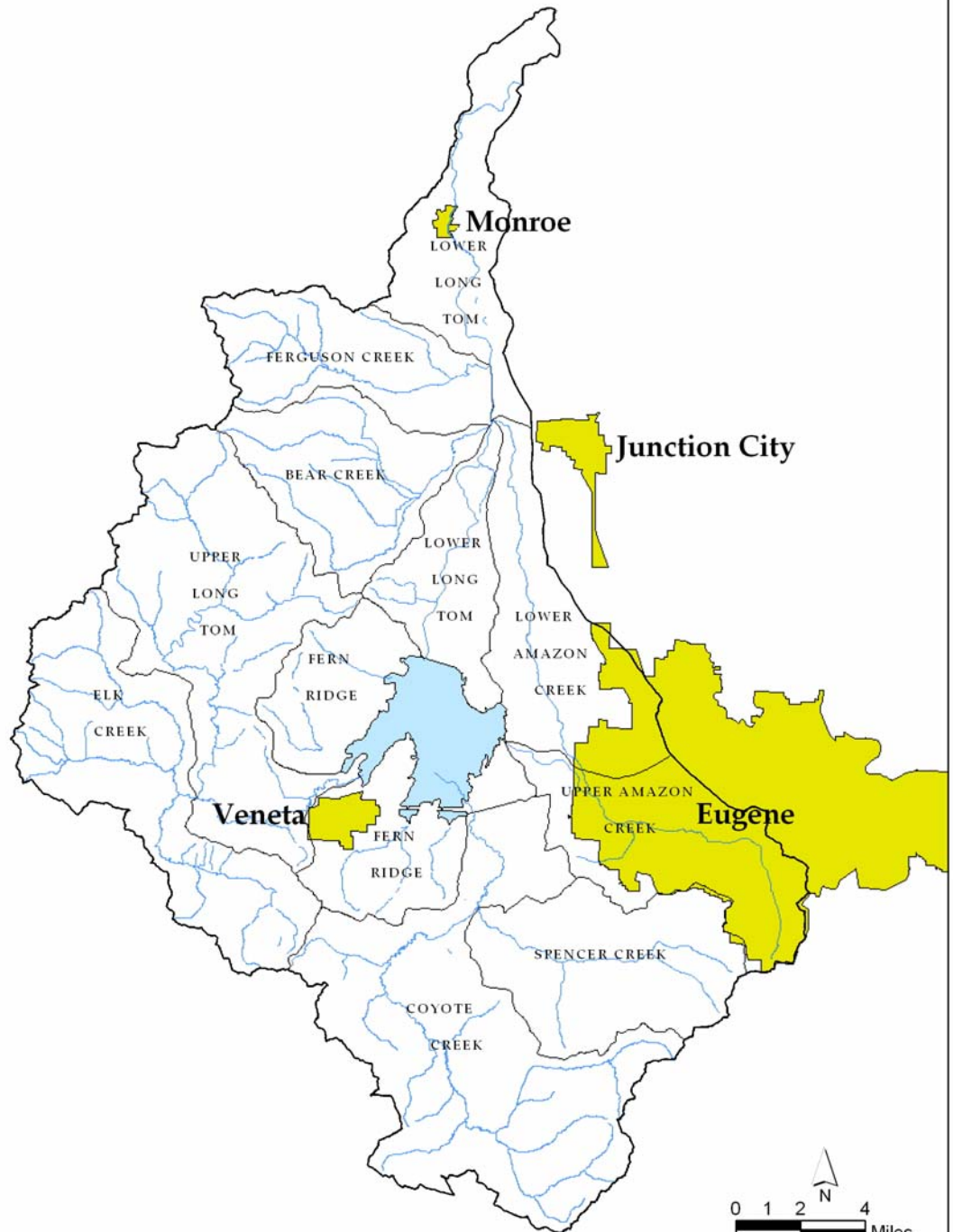
751 S. Danebo Ave.
Eugene, OR 97402

Phone: (541) 683-6578

Fax: (541) 683-6998

Web:
www.longtom.org

Long Tom Watershed Ten Major Subbasins



Source: Long Tom Watershed Council, Brian Issa 9/03

STAFF

Executive Director
Dana Erickson
683-6578

Projects & Monitoring
Cindy Thieman
683-2983

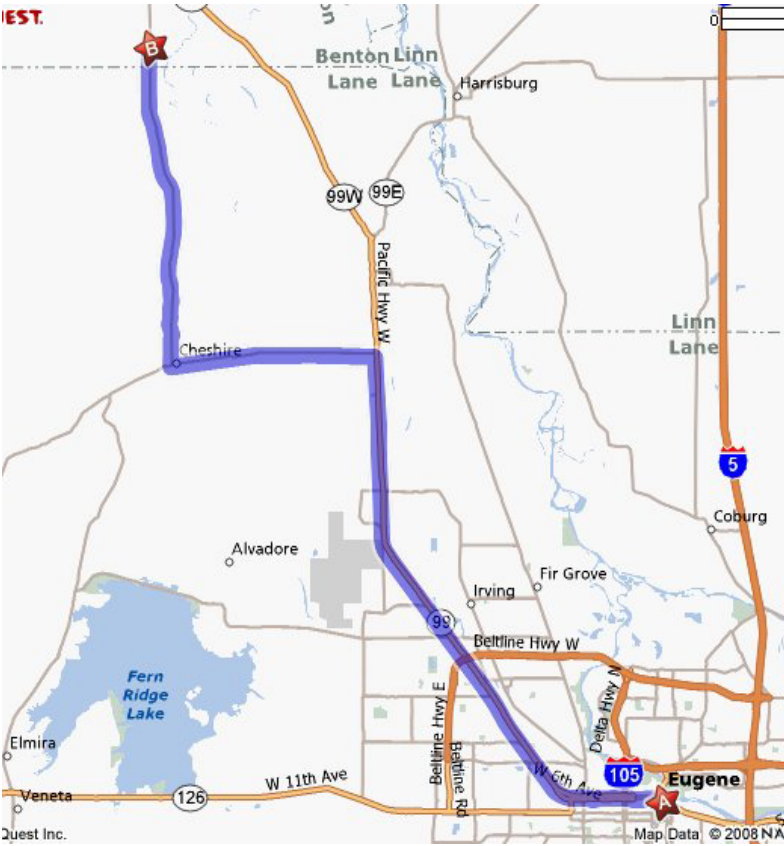
Fiscal Manager
Amanda Wilson
683-6949

Outreach & Admin
Christy Yost
683-6949

YOU ARE INVITED to the 11th Annual Celebration! RSVP Required. Tix: \$10 ea.
Saturday, September 20th at 1:00 p.m.
Stroda Brothers' Farm, Monroe



Long Tom Watershed Council
 Phone: 683-6578
 e-mail: coordinator@longtom.org
www.longtom.org
 751 S. Danebo Avenue
 Eugene, OR 97402



Annual Celebration
Saturday, September 20th, 1:00 p.m.
Stroda Brothers' Farm
96535-A Territorial Road, Monroe
RSVP Required

Directions to celebration site:
 Coming from the south on Territorial Road, pass Diamond Woods Golf Course on the left. Go about ¾ mile and watch for silver barn, with tan shop and house. The barn has a sign on the north side "Stroda Bros Farm".

Although staff is unavailable to carpool due to early set-up for the event, email cyost@longtom.org if you'd like to connect with other potential carpoolers. We'll send an email back to all potential carpoolers Sept 19 (the day before) so you can hook up. You can park-and-ride from the Council office. We suggest meeting at 12:15 and leaving shortly thereafter

Council Office: Take West 11th toward Veneta, pass Beltline Rd. Next signal is Danebo, turn right. First driveway on right after Hertz dealer: Wetlands Partnership Office.