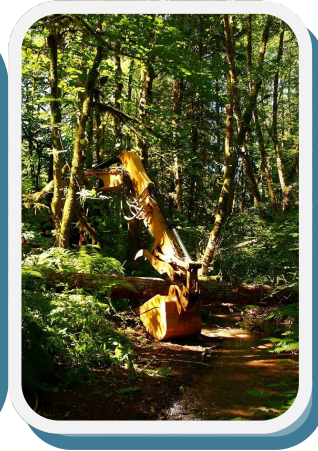




Annual Report

2014 Highlights

Action
Through
Understanding



2014 Funding Highlights

- Secured **\$660,000** in grants and contracts for restoration, education, and monitoring
- Secured **\$86,000** in new funding to support our Urban Water & Wildlife Program
- Total amount received from fundraising **increased by 27%**
- **22% increase** in the number of people who gave to LTWC

Restoring Streams & Habitat

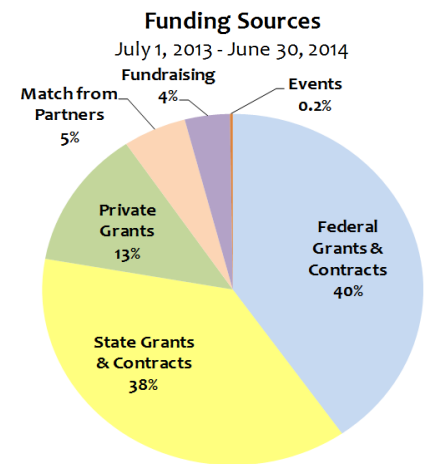
- Actively worked on 36 sites to improve **habitat for native species** in and near **streams, on farms and prairies, wetlands, and oak habitats**
- Completed our 2nd urban project to **filter stormwater runoff**
- Removed or replaced 6 barriers to open 16 miles for **fish migration**
- Enhanced over 400 acres of **rare oak woodland & savanna, upland prairie and wet prairie** habitats
- Planted 58,000 **native trees & shrubs**
- **Partnered with local land managers and private landowners** to remove **invasive weeds** from 330 acres along the Willamette River

Engaging the Community

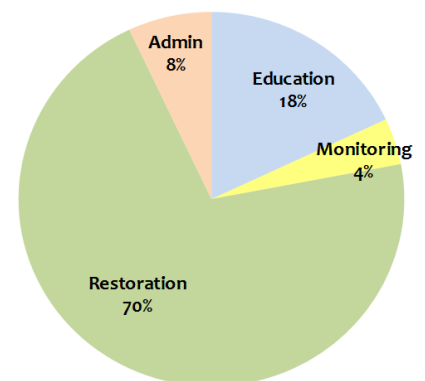
- Involved 183 volunteers in **community outreach, watershed science and stewardship, technical expertise, and board service**
- Engaged 228 community members at 6 **public watershed learning events**
- Started a new outreach program to **educate local Spanish-speakers** who work with pesticides in the yard and landscape business
- Developed **relationships** with dozens of new landowners for future opportunities

Learning through Gathering Data

- Collected **pesticide and water quality samples** at 5 sites in Amazon Creek
- 28 volunteers tagged 34 **cutthroat trout**, and over 500 cutthroat are being tracked to learn about their **population and seasonal migratory patterns**.
- Gathered **water temperature data** at 27 sites across the watershed
- Sampled **macroinvertebrates** from 5 sites as indicators of stream health



Expenses: \$802,527
July 1, 2013 - June 30, 2014



Mission: The Long Tom Watershed Council serves to improve water quality and watershed condition in the Long Tom River basin through education, coordination, consultation, and cooperation among all interests, using the collective wisdom and voluntary action of our community members.

Contacts: • Deborah Saunders Evans, Board Chair • Dana Dedrick, Watershed Coordinator/Executive Director

• (541) 338-7055 • www.longtom.org • Like us on Facebook!



Board of Directors

Amazon

Alan Dickman
David Ponder
Therese Walch,
Secretary

Lower Long Tom

Steve Horning,
Vice-Chair
Jim Pendergrass,
Past Chair
John Reerslev

Upper Long Tom

Cary Hart
Sue Kacskos
Charles Ruff

At Large

Mike Brinkley,
Treasurer
Steve Cole
Beth Krisko
Deborah Saunders
Evans, Chair
David Turner,
Vice-Chair

Executive Director

Dana Dedrick
541-338-7055

www.longtom.org



Thank you to our 2014 supporters!

Business League (5)

Hunttons' Family Farm, Lochmead Farms, Ninkasi Brewing Co. & Sterling Bank, Pacific Ag, Inc., Reerslev Farms, Inc.



Individual Donors (71)

Rolf Anderson, David Barta, Philip Bayles, Victoria Blackman, Dick & Carolyn Booth, Peg Boulay & Bruce Newhouse, Mike Brinkley, Ted & Lindy Brown, Doug & Linda Carnine, Cole Resource Management, Inc., Dana & Jason Dedrick, Deerhaven Farms, Ron & Pam Detering, Alan & Sue Dickman, Allen Dong, Dr. Doug Evans Feline Thyroid Clinic, Tina Fenley, Jason Garland, Niall & Ali Gartlan, Len Gillette & Pennie Spraggins-Gillette, Cary Hart, Cliff & Rod Herbert, Gary & Jo Holzbauer, Jeanette Kessler & Andrew Burke, Hummingbird Wholesale, Hal Hushbeck, Sue Kacskos, Kurt & Mary Koehler, Beth Krisko, Laughing Stock Farm, Gary Lech, Dawn Lesley, Kim Leval, Levi Strauss & Co., Tom Lively & Megas MacDonald, Horst Lueck, Whitey Lueck, Rich Margerum, Pat McDowell, David Moon & Joan Kelley, John Moriarty, David Ponder, Max Nielsen-Pincus, Keli Osborn, Jim & Chris Pendergrass, Hugh & Sue Prichard, Mark Rauch, Reed Family Foundation, Rexius Forest By-Products, Inc., Jared Rubin & Penny Joy Salus, Charles Ruff, Peter Ruffier & Lori Kievith, Deborah Saunders Evans, Rik Huhtanen & Karen Scholler, Vicki Singer, Rene Speer, Alex Stone, Shirlee Taylor, David Turner, Transition Mangement, Inc., Jabrila & David Wali Via, Therese Walch, Mary Ellen West, Weyerhaeuser Co., In honor of Elizabeth Davidson, In memory of Gerry Rasmussen, Anonymous (4)

Taste the Watershed (9)

Brigadoon Wine Co., Hop Valley Brewing Co, Ninkasi Brewing Co., Oakshire Brewing Co., Organically Grown Co., Party Downtown, Pyrenees Lounge & Wine Cellars, Silvan Ridge Winery, Sweet Life Patisserie

Grant & Project Partners

Private (8)

Bonneville Environmental Foundation, Environmental Systems Research Institute (ESRI), Richard & Gretchen Evans, McKenzie River Trust, Meyer Memorial Trust, National Fish & Wildlife Foundation, Network of Oregon Watershed Councils, Sure Crop Farm Service

Public (10)

City of Eugene, NRCS Conservation Reserve Enhancement Program, Oregon Dept. of Agriculture, Oregon Dept. of Environmental Quality, Oregon Dept. of Fish & Wildlife, Oregon Watershed Enhancement Board, U.S. Army Corps of Engineers, U.S. Bureau of Land Management, U.S. Environmental Protection Agency, U.S. Fish & Wildlife Service



Thank you to all the wonderful volunteers, donors, project landowners and everyone who supports clean water and healthy habitat in the Long Tom River basin.
Your dedication makes LTWC's work possible!