



## A snapshot of local impact



*Action through Understanding since 1998*

*Willamette River • Long Tom River • Amazon Creek*

*Veneta • Crow • Noti*

*Monroe • Cheshire • Junction City • Eugene*

*The Long Tom Watershed Council serves to improve water quality and watershed condition in the Long Tom River basin through education, coordination, consultation, and cooperation among all interests, using the collective wisdom and voluntary action of our community members.*

**Contacts:** • Deborah Saunders Evans, Board Chair • Dana Dedrick, Watershed Coordinator/Executive Director

• (541) 338-7055 • [www.longtom.org](http://www.longtom.org) •  Like us on Facebook!

## Model Watershed Program in rural areas

### Helping fish, wildlife & future generations

After increasing our work in 3 rural creek basins for 5 years, we are making progress on our ambitious goals. LTWC was chosen to participate in this unique 10-year program due to our diverse community support, science-based prioritization of work, high-quality monitoring data, and our proven

**10 years of results** working with private landowners to achieve habitat restoration. Projects include opening streams so native trout can migrate once again, plantings for shade and habitat, and restoring productive prairies, wetlands, and oak savannas. This remarkable progress has helped LTWC and its partners receive several local and international awards – most recently the **Outstanding Civilian Service Award** from the Army Corps of Engineers.



## Amazon Creek

### Bridging urban & rural communities

LTWC is leading an amazing partnership to improve Eugene's hidden gem, Amazon Creek. We're continuing to monitor pesticides through the **Pesticide Stewardship Program** — the only such effort in Oregon to include an urban area (Eugene) that is upstream of farmland. With the capital investment of local business owners matched by City of Eugene, we've already completed two voluntary stormwater improvement projects and are designing more. This **curbs stormwater pollution 20-50 years ahead of time**—long before it would have been subject to the higher water quality standards of redevelopment codes.



Photo: Raptorviews, Philip Bayles, psb@efn.org

## Willamette River

### Community outreach, science & stewardship

We are using our **expertise in landowner outreach and habitat restoration** to partner with land trusts and others in talking with river landowners, removing invasives, and restoring habitat function and quality along the Willamette River. This leadership is resulting in a network of conservation learning and action that will **meet the needs of both people and the river, together.**



**Leading community-based conservation.** LTWC has led the development and implementation of over 70 restoration projects and multiple programs since 1998.

**Helping property owners directly.** Over 90% of the Long Tom Watershed, and the Willamette River basin, is private land. We've become experts in helping people find solutions for fish, wildlife and water quality that match their values and business needs.

**Win-win scenarios.** LTWC matches the funding priorities of foundations and government grantors with local community needs and conservation priorities.

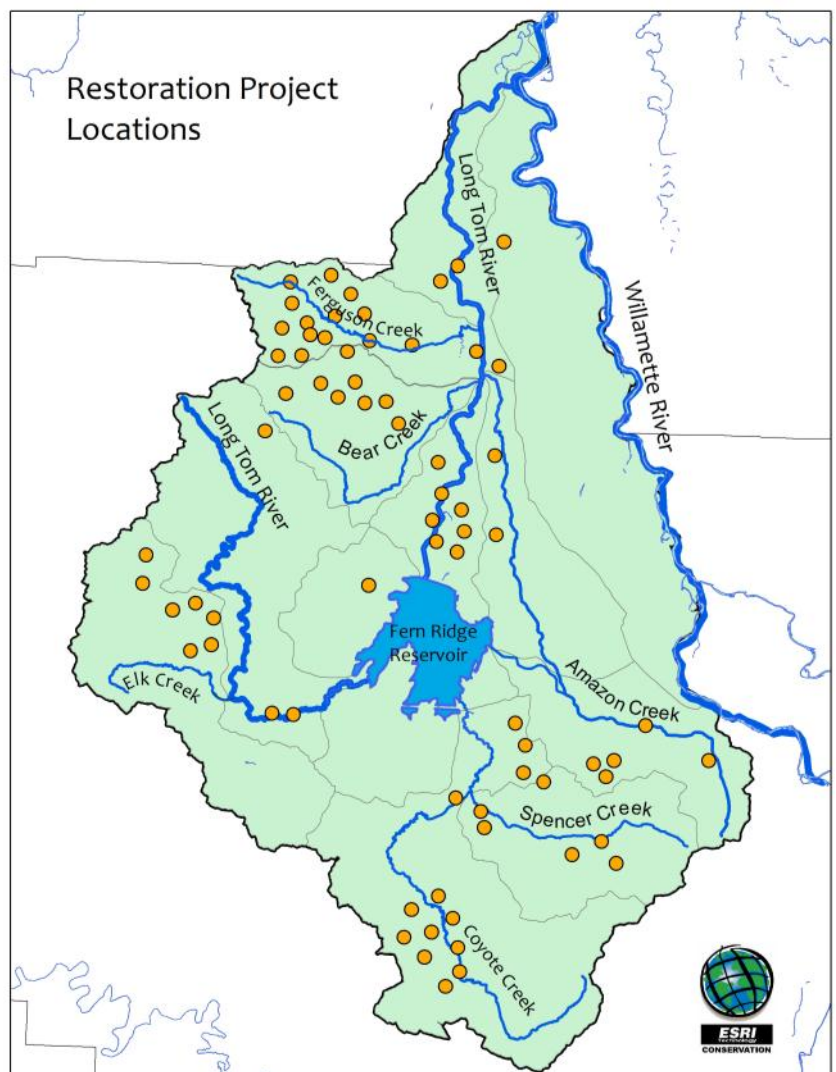
**Investing in our local economy.** Over 85% of LTWC revenue is spent on local vendors, with a 2.6 multiplier effect on job creation in Lane County.

### Just one year, in numbers.

- 20 habitat restoration projects
- 6 fish migration barriers removed or replaced
- 85,000 native trees & shrubs planted
- 176 people in learning programs
- 175 people volunteering
- 26 data sites on stream health
- 4 local & international awards

“One thing that struck me about the (Council) was their enthusiasm, passion, and interest in working to better the local watershed.”

– Dick Evans, philanthropist



## Board of Directors

2013-14

### *Amazon*

Alan Dickman  
David Ponder  
Therese Walch,  
*Secretary*

### *Lower Long Tom*

Steve Horning,  
*Vice-Chair*  
Jim Pendergrass,  
*Past Chair*  
John Reerslev

### *Upper Long Tom*

Cary Hart  
Sue Kacskos  
Charles Ruff  
  
*At Large*  
Mike Brinkley,  
*Co-Treasurer*  
Steve Cole  
Beth Krisko  
Deborah Saunders  
Evans, *Chair*  
David Turner,  
*Vice-Chair*

### **Executive Director**

Dana Dedrick  
541-338-7055

## Grant & Project Partners

### *Private*

Bonneville Environmental Foundation, Environmental Systems Research Institute (ESRI), Richard & Gretchen Evans, McKenzie River Trust, Meyer Memorial Trust, National Fish & Wildlife Foundation, Network of Oregon Watershed Councils, Sure Crop Farm Service

### *Public*

City of Eugene, City of Veneta, Oregon Dept. of Environmental Quality, Oregon Dept. of Fish & Wildlife, Oregon Watershed Enhancement Board, U.S. Army Corps of Engineers, U.S. Bureau of Land Management, U.S. Environmental Protection Agency, U.S. Fish & Wildlife Service

### *Landowners & Volunteers*

52 private landowners and 176 Volunteers!

### *Individual & Business Sponsors*

87 individual gifts & 5 Business League sponsorship for over \$22,000 during our 2nd Annual Fundraising Campaign!



“Eating dinner beside the Willamette in Portland, it was humbling to think of the same water flowing by my farm (near Monroe) on the Long Tom River first, then through Portland on its way to the ocean. It supports trout and salmon the entire way.” –Tony Stroda, Stroda Brothers Farm