



# LONG TOM WATERSHED COUNCIL

August / September 2015

Action  
Through  
Understanding

## Dinner & Tour Invitation

18<sup>th</sup> Annual Meeting & Celebration

Thurs, Sept 10, 5:45 - 7:45 p.m.

Deck Family Farm



Friendly Neighbors!

Kids Welcome!

Delicious Food!

Live Music!

If you only come to one LTWC meeting this year,  
this is it!

**Register by Sept 1!**

**Tickets: \$20/person, \$10/children 5 & over, \$50/family of 3+**

Your registration payment helps us cover the catering costs for an amazing meal. Menu is a picnic-style dinner prepared by Carte Blanche Catering, featuring organic, pasture-raised meat from Deck Family Farm.

**More on next page**

### Inside

- Annual Celebration details
- Watershed Awards
- Board Elections
- Upcoming Calendar of Events
- Board & Staff Contacts
- Wildcraft Cider Apple Drive
- Directions to Deck Family Farm

### Special Inserts:

- 2015 Annual Report
- Registration Form

The Long Tom Watershed Council serves to improve water quality and watershed condition in the Long Tom River basin and surrounding drainages through education and collaboration among all interests, using the collective wisdom and voluntary action of our community members.

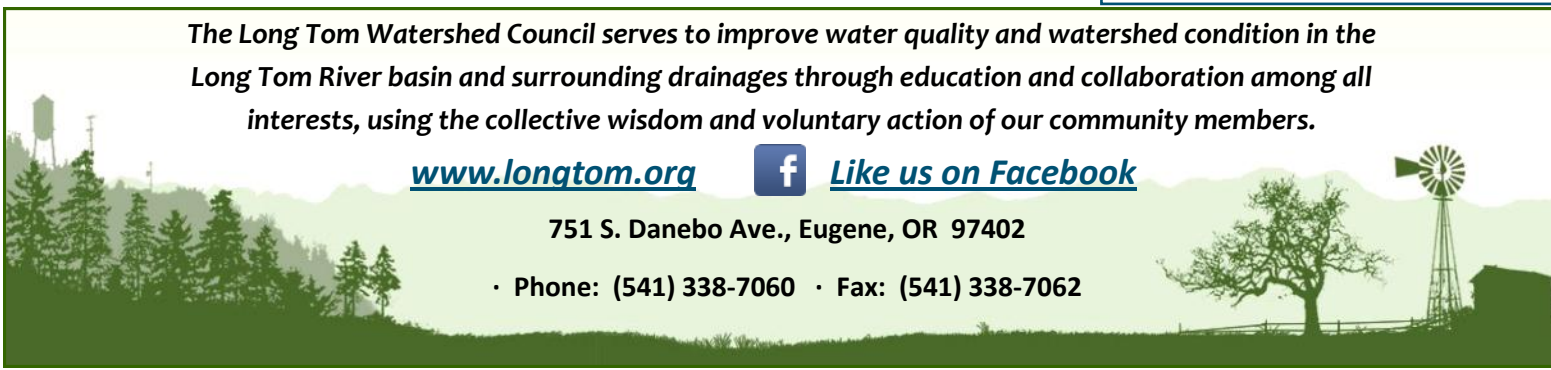
[www.longtom.org](http://www.longtom.org)



[Like us on Facebook](#)

751 S. Danebo Ave., Eugene, OR 97402

• Phone: (541) 338-7060 • Fax: (541) 338-7062



# Annual Meeting & Celebration, “Connecting Farms & Streams”

Thurs, September 10, 5:45 - 7:45 p.m.

Deck Family Farm, 25362 High Pass Rd (directions on back page)

Join us at beautiful Deck Family Farm along the banks of Owens and Turnbow Creeks, about 7.5 miles west of Junction City. Everyone is invited to this family-friendly dinner and tour in the country. Bring the whole family and tell your friends, neighbors and colleagues not to miss LTWC’s biggest event of the year!

## Featuring:

- **Special Guest Speaker: Pam Wiley**, *Willamette River Initiative Manager at Meyer Memorial Trust*
- **Delicious dinner** catered by Carte Blanche, featuring **organic, pasture-raised meet** from Deck Family Farm
- **No-host bar**
- **Watershed Awards**
- **Board elections**
- Learn about the efforts of farms and **neighbors in Owens Creek** to improve habitat for fish and wildlife
- **Tour of Deck Family Farm habitat enhancement project**
- **Educational activity for kids**
- The very best in **watershed community!**

Hosted by your LTWC Board of Directors.

**Please bring a blanket or chair to sit on and cash if you’d like wine or beer.** We hope to see you there among watershed friends and neighbors!

Questions? Please call Kathryn: 541-654-8965



Images courtesy of Deck Family Farm

---

## 2015 Watershed Awards

These volunteers and partners will be presented with an award at the September 10<sup>th</sup> Annual Celebration for their outstanding service and dedication to the mission, goals, and work of the Council. Thanks to these amazing award recipients and everyone supports the work of LTWC!

Private Sustaining Entity: **Davis Commercial Properties (Lee and Veronica Davis and family)**

Public Sustaining Entity: **U.S. Fish & Wildlife Service**

Project Landowners of the Year: **Giustina Land & Timber, Hull-Oakes Lumber Co. and Thermo Fisher Scientific**

Project Contractor of the Year: **R. Franco Restoration, Inc.**

Outstanding Volunteer: **Kate Widmer**

Outstanding Technical Volunteers: **Pat McDowell**

Outgoing Board members: **Therese Walch**

## Board Elections

All members of the Long Tom Watershed Council—that is any adult who supports the purpose and mission of the Council and is connected to the watershed community—**may sign in at the September 10 Annual Meeting and vote**. Each year, the Nominating Committee recruits and recommends a slate of board of directors candidates for election at the Annual Meeting. This year’s slate of candidates will continue to balance the diversity of perspectives and geography that present board members bring to the table. We will post candidates’ info on our website, [longtom.org](http://longtom.org), before the event, and we’ll also send the info out on our email listserv. Candidate bios will be provided on the day of the event within the programs.

## Upcoming Events

### LTWC Events

#### Visit our booth at Southeast Neighbors Picnic & Festival

Saturday, Sept 12, 3 - 7 p.m. at Tugman City Park near Hilyard and 37<sup>th</sup> Ave.

#### Visit our booth at BRING’s Home & Garden Tour

Sunday, Sept 13, 10 a.m. - 4 p.m. at Adams Elementary School, 950 W. 22<sup>nd</sup> Ave, Eugene.

#### Next Public Meeting

Tuesday, Nov 17, 6 p.m. Topic & Location will be posted in November newsletter and at [longtom.org](http://longtom.org).

## Partner Announcements

### WREN (Willamette Resources & Educational Network) Autumn Volunteer Orientation

Thurs, Sept. 17, 6 - 7:30 p.m., West Eugene Wetlands Partnership Office, 751 S. Danebo Ave., Eugene.

The Long Tom Watershed Council, a local nonprofit, counts on participation from many people and organizations. The local office of the Bureau of Land Management (BLM) donates postage for our mailings. They use the following disclaimer, standard procedure for all BLM partnerships:

**BLM Disclaimer:** “The views and conclusions contained in this document are those of the authors and should not be interpreted as representing the opinions or policies of the U.S. Government. Mention of trade names or commercial products does not constitute their endorsement by the U.S. Government.”

The Long Tom Watershed Council is still a local nonprofit (since 1998) with no government authority. We partner with local people, businesses, and agencies in the interest of finding local solutions and bringing grant funding from private and public sources to do restoration, education, and monitoring work in the Long Tom River basin. We’re thankful for the donation of postage expenses!

## LTWC Board of Directors

### Lower Long Tom

Steve Horning, *Vice-Chair*  
Jim Pendergrass, *Chair*  
John Reerslev

### Upper Long Tom

Cary Hart  
Lindsay Reaves  
Charles Ruff

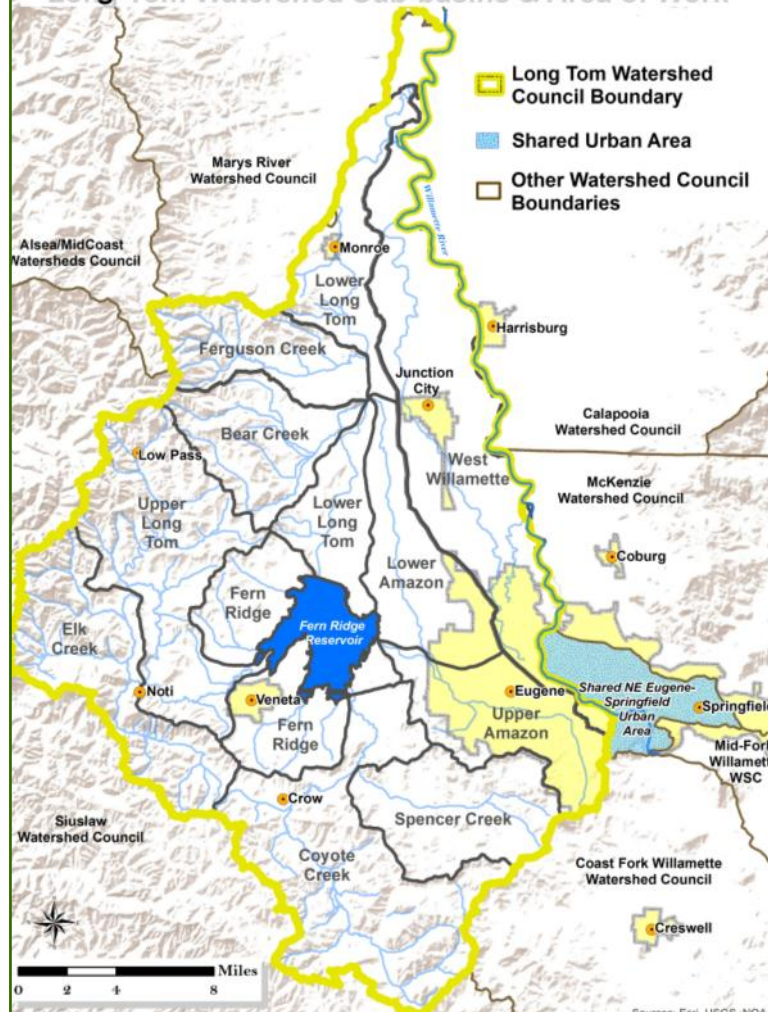
### At Large

Mike Brinkley, *Treasurer*  
Deborah Saunders Evans,  
*Past Chair*  
David Turner, *Vice-Chair*

### Amazon

Alan Dickman  
David Ponder  
Therese Walch, *Secretary*

### Long Tom Watershed Sub-basins & Area of Work



## Council Staff Contacts

Dana Dedrick, *Watershed Coordinator/E.D.:* 541-338-7055

Rob Hoshaw, *Operations Director:* 338-7060

Clinton Begley, *Development & Communications:* 654-8965

Jed Kaul, *Fish Biologist:* 338-7058

Katie MacKendrick, *Ecologist:* 338-7033

Sarah Whitney, *Urban Habitat & Stormwater:* 654-8965

Kathryn Rifenburg, *Outreach & Education:* 654-8965

Heidi Heisler, *Fiscal Manager:* 338-7042

Christer LaBrecque, *Stewardship Technician:* 338-7045

## ***Support LTWC through Community Apple Drive!***

LTWC is thrilled to announce an exciting new partnership with Wildcraft Cider Works for their upcoming Urban Orchard Community Apple Drive! From now through November 1<sup>st</sup>, Wildcraft will be accepting contributions of all varieties of apples, pears and plums from residents throughout the watershed. Whether from an orchard, pasture, or backyard, Wildcraft will use the contributed fruit from the watershed to produce a truly collaborative special cider scheduled for debut at a Wildcraft Cider Works cider house event this New Year's Eve. **Wildcraft is donating 10% of all sales from this special cider directly to LTWC!** Simply drop off the fruit at one of the locations listed below, and you'll receive a complementary cider or fresh pressed juice. That means the more fruit they get, the more cider they make, and the bigger the impact to supporting both our urban and rural projects throughout the watershed. So if the limbs of your fruit trees are already hanging low and ready for the picking, get a box of fruit over to one of the Wildcraft's drop-off locations and turn it into delicious support for the Long Tom. If you've got too many trees to pick on your own, feel free to contact Wildcraft Cider Works directly, and they may be able to get some folks over to lend a hand. You can find out more about this exciting partnership and how you can be a part of the Urban Orchard Apple Drive at [longtom.org](http://longtom.org) and [wildcraftciderworks.com](http://wildcraftciderworks.com).



### **Drop off locations:**

- The Ciderhouse: 390 Lincoln Street, Eugene (Tues - Thurs, 4 p.m. - 11 p.m.; Fri - Sat, 3 p.m.—midnight)
- Wildcraft Press House: 254 Lincoln Street, Eugene (Mon - Fri, 9 a.m. - 5 p.m.)

---

## **Annual Celebration Directions**

***Thurs, Sept 10, 5:45 - 7:45 p.m.***

***Deck Family Farm***

***25362 High Pass Rd., Junction City***

- The farm is located on the south **side of High Pass Rd.** about **7.5 miles west of Junction City** and **3.5 miles west of the intersection with Territorial Hwy.**
- Turn just west of where Turnbow Lane meets High Pass Rd.
- **Signs will be posted**, and volunteers will **help with parking**
- **Travel times:**
  - ~ 30 minutes from Eugene
  - ~ 25 min from Veneta
  - ~ 15 min from Monroe