



Long Tom Watershed Council (LTWC) will work with you to create a welcoming landscape with multiple ecological benefits by:

- Showing leadership to your customers and other businesses by having a healthy, beautiful landscape that uses few pesticides and fertilizers, and wastes no water.
- Integrating stormwater management to reduce pollution in our streams from roofs, parking lots and work areas.
- Developing site specific strategies for source control to limit pollutants flowing off your site and into local waterways.
- Creating an aesthetically pleasing landscape to attract customers and butterflies!

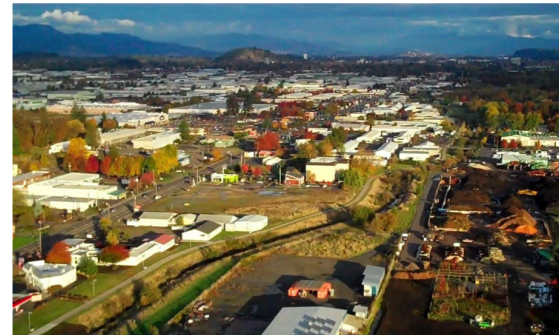
*Thermo Fisher Scientific* removed a three-story building with plans to fill in with lawn. Plans changed when employees who participated in BRING's RE:think program coordinated with LTWC. The Council designed and permitted the project and oversaw Rexius' installation of a swale, retention pond, and upland meadow that supports wildlife and cleans an acre of stormwater before it flows into Amazon Creek.



*Signage identifies participating businesses in the Trout-Friendly Landscapes Program*

### AMAZON CREEK AND LONG TOM

- *From its headwaters on Spencer Butte, Amazon Creek connects our community, serves important stormwater and flood control functions, and is a critical wildlife corridor through Eugene.*
- *Amazon Creek merges with the Long Tom River and then the Willamette, supporting trout, herons, and otter along the way!*
- *The choices we make regarding our landscapes and business practices influence water quality, habitat and recreational opportunities along Amazon Creek, the Willamette River and beyond.*



For more information, contact Sarah Whitney, LTWC Urban Habitat and Stormwater Specialist and registered landscape architect, who brings more than 18 years of experience to each project.



**LONG TOM WATERSHED COUNCIL**  
541-654-8965

[urbanwaters@longtom.org](mailto:urbanwaters@longtom.org)  
[amazoncreek.org](http://amazoncreek.org)

# Create a Trout-Friendly Landscape



Enhance your business landscape, attract customers and improve local waterways

**LONG TOM WATERSHED COUNCIL**





## SERVICES FOR INDUSTRIAL AND COMMERCIAL BUSINESSES:

- Free site assessment
- Significant cost offsets\* for Trout-Friendly Landscapes and/or voluntary stormwater management:
  - Design
  - Permitting assistance
  - Contractor selection assistance
  - Construction oversight assistance
  - Maintenance assistance for five years
- 50% installation cost offsets — up to \$5,000 for commercial and \$20,000 for industrial projects can be reimbursed
- Free recommendations and trainings
- Public tours of completed projects (optional)
- Free business promotion such as news releases and listing on LTWC's website
- Free assistance in determining eligibility for stormwater fee reduction

\* Grant and other matching moneys change depending on sources and areas of focus. Contact us to see if there are cost offsets for your business type and location.

## ENHANCE YOUR BUSINESS WHILE HELPING WILDLIFE

### Davis Properties

**BEFORE:** This forgotten landscape was the entrance for two local businesses. The soil and lawn had become baked due to the reflected heat and lack of irrigation and maintenance.



**AFTER:** Roof run-off is routed through swales on either side of the path. The amended soils and water-loving plants absorb stormwater as well as pollutants picked up from the roof, while creating an attractive landscape for people and wildlife.



A stormwater facility at Essex General Construction, designed and installed by Daichi Landscapes.



### Gibson Steel

This rain garden (above) manages over an acre of water that comes off of the heavily used industrial yard at Gibson Steel Basins. Installed by Native & Urban Gardens, this area reduces the amount of water coming off the site as well as handling pollutants such as zinc, suspended solids and hydrocarbons. A sand collector custom modified by Gibson reduces the long-term maintenance of the rain garden and creates a fun waterfall effect!

## SMALL STEPS FOR LARGE GAINS



This Cutthroat Trout was found in Amazon Creek. Improving water quality and habitat can benefit this important native species.

## Trout-Friendly Landscapes (TFL) is a partnership of the Long Tom Watershed Council, City of Eugene and local businesses.

We help you improve your business site to benefit water quality and habitat for native species in Amazon Creek and the Willamette River. To achieve this goal, we work with you to develop best management practices and upgrade your landscape by improving soil, using low maintenance plants, and designing beautiful stormwater facilities.



Native plants are beautiful landscape elements and require little maintenance or water to thrive.

By using plants that provide habitat for wildlife, we can weave natural systems back into our urban fabric. TFL landscapes attract hummingbirds, dragonflies, and frogs. Mallards bring their ducklings for a swim and even a fox has been seen enjoying these new habitat areas.