



LONG TOM WATERSHED COUNCIL

May 2015

Action
Through
Understanding

Project Tour Invitation on Private Land

Tues, May 26, 6 - 8:00 p.m., 86801 Dukhobar Rd

Balancing Grazing with Oak & Prairie Habitat Stewardship



Left: Oak savanna habitat at the Kime property.

Right: The Kime's manage pasture both for grazing and native prairie species such as these wildflowers.

Topics:

- Learn how rotational grazing can be paired with prairie and oak habitat enhancement
- How landowners have stewarded a project on a working ranch
- Importance of oak and prairie habitat in the Willamette Valley for native species such as pollinators and songbirds

Speakers:

Val Kime, *property owner*

Jarod Jebousek, *U.S. Fish & Wildlife Service Private Lands Biologist*

Ed Alverson, *Ecologist*

Katie MacKendrick, *LTWC Ecologist*

Tour is open to all

Free, with light refreshments

Tour is about a 3/4 mile walk over some uneven ground

For more info, Rob: 338-7060 or operations@longtom.org

Hosted by Lindsay Reaves & Alan Dickman, LTWC board members

more info on next page

The Long Tom Watershed Council serves to improve water quality and watershed condition in the Long Tom River basin and surrounding drainages through education and collaboration among all interests, using the collective wisdom and voluntary action of our community members.

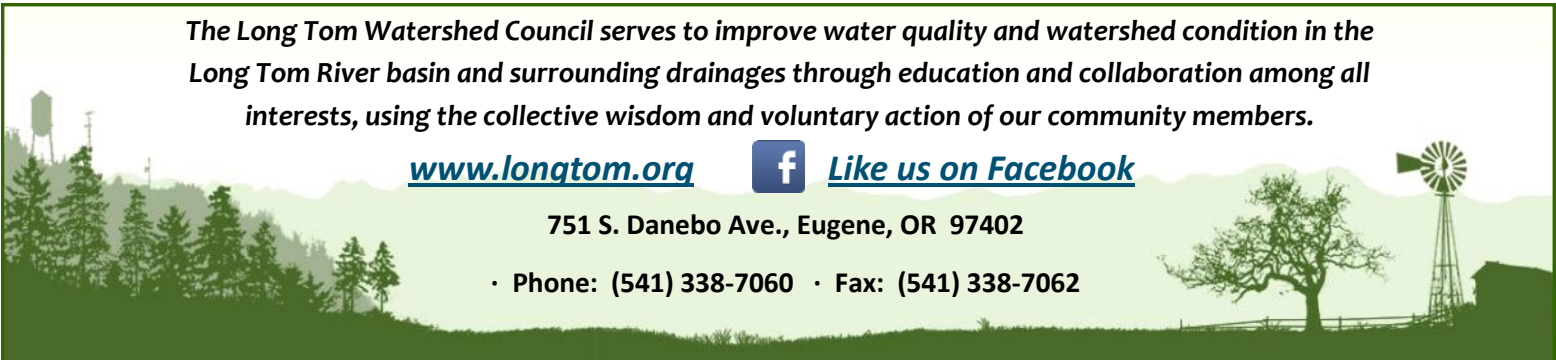
www.longtom.org



Like us on Facebook

751 S. Danebo Ave., Eugene, OR 97402

• Phone: (541) 338-7060 • Fax: (541) 338-7062



Balancing Grazing with Oak and Prairie Habitat Stewardship

Tues, May 26, 6 - 8:00 p.m. Tour of Kime Property,

86801 Dukhobar Rd, Eugene (Directions on page 4. Signs will be posted.)

Join us at our May 26 tour to learn about oak and prairie habitat enhancement and see an example of how landowners can balance working lands with habitat stewardship. LTWC partnered with the Kime family to improve 80 acres of oak and prairie habitat southwest of Eugene. The structure and native plant communities of these rare habitats is important for many native wildlife species, including migratory songbirds and pollinators.

Non-native, invasive plants can have huge negative impacts on oak woodlands, oak savannas, prairies and the wildlife that depend on these habitats. This project is a great example of how seasonally-timed grazing can be an effective way of controlling non-native, invasive weeds. In our area, more than 100 different invasive plants can affect oak and prairie habitats, including a combination of annual and perennial invasive weeds and woody shrubs and trees.

Seasonally-timed grazing can support native plant communities by helping to control the presence of non-native, invasive plants such as Scot's broom. Grazing during the early spring and late summer or early fall is typically the most effective strategy, and rotating grazers off of high quality prairie habitat during the early summer allows native prairie wildflowers and grasses to complete their flowering cycles.

Much of the remaining high-quality prairie and oak habitat in the Long Tom Watershed is on private pasture lands. We encourage folks to call if they're interested in learning more about opportunities to improve oak and prairie habitats that incorporate pasture lands. **Katie MacKendrick, Ecologist, 541-338-7033.**



Photos: After thinning, legacy oaks (**top**) have the space to spread their crowns, which provides more acorns for wildlife, and more light is able to get through and stimulate the growth of wildflowers (**below**).

Welcome, Kathryn Rifenburg!



We are excited to introduce Kathryn Rifenburg, our new Outreach and Education Specialist! Kathryn will be working primarily with our Urban Waters & Wildlife program developing fun, engaging projects and partnerships with businesses, outreach to the Spanish speaking population and to generally foster relationships with our urban partners. Hailing from the Southeast, Kathryn has a broad background in aquatic conservation and has spent several years working with nonprofits. She is excited to be a part of LTWC and to explore all the Pacific Northwest has to offer. Welcome to the team, Kathryn!

Recent Gifts

Thank You for Your Support!

Business League: Huntons' Family Farm

Individual Donors: Anonymous (3), Andy Burke & Jeanette Kessler, Deerhaven Farms, Inc., Mike & Diana Hollingshead, Hummingbird Wholesale, Jim & Christine Pendergrass, Mike & Mary Shippey, Therese Walch



Upcoming LTWC Events

May 16 Visit our Booth at Walkin' & Rollin' through the Wetlands

Sat, May 16, 10 a.m. - 2 p.m., Amazon Creek Bike Path about 4 blocks west of LTWC office

May 28 "Taste the Watershed" at Ninkasi

Thurs, May 28, noon - 10 p.m. Ninkasi Tasting Room, 272 Van Buren St, Eugene

Ninkasi is donating 25% of their beer sales to LTWC!

June 30 Project Tour: "Trout Friendly Landscapes - Creating Multi-Functional Business Grounds"

Tues, June 30, 6 - 8 p.m. Thermo Fisher Scientific, 29851 Willow Creek Rd. (West Eugene, near the intersection of W. 18th and Danebo Ave.)

The Long Tom Watershed Council, a local nonprofit, counts on participation from many people and organizations. The local office of the Bureau of Land Management (BLM) donates postage for our mailings. They use the following disclaimer, standard procedure for all BLM partnerships:

BLM Disclaimer: "The views and conclusions contained in this document are those of the authors and should not be interpreted as representing the opinions or policies of the U.S. Government. Mention of trade names or commercial products does not constitute their endorsement by the U.S. Government."

The Long Tom Watershed Council is still a local nonprofit (since 1998) with no government authority. We partner with local people, businesses, and agencies in the interest of finding local solutions and

LTWC Board of Directors

Lower Long Tom

Steve Horning, *Vice-Chair*
Jim Pendergrass, *Chair*
John Reerslev

Upper Long Tom

Cary Hart
Lindsay Reaves
Charles Ruff

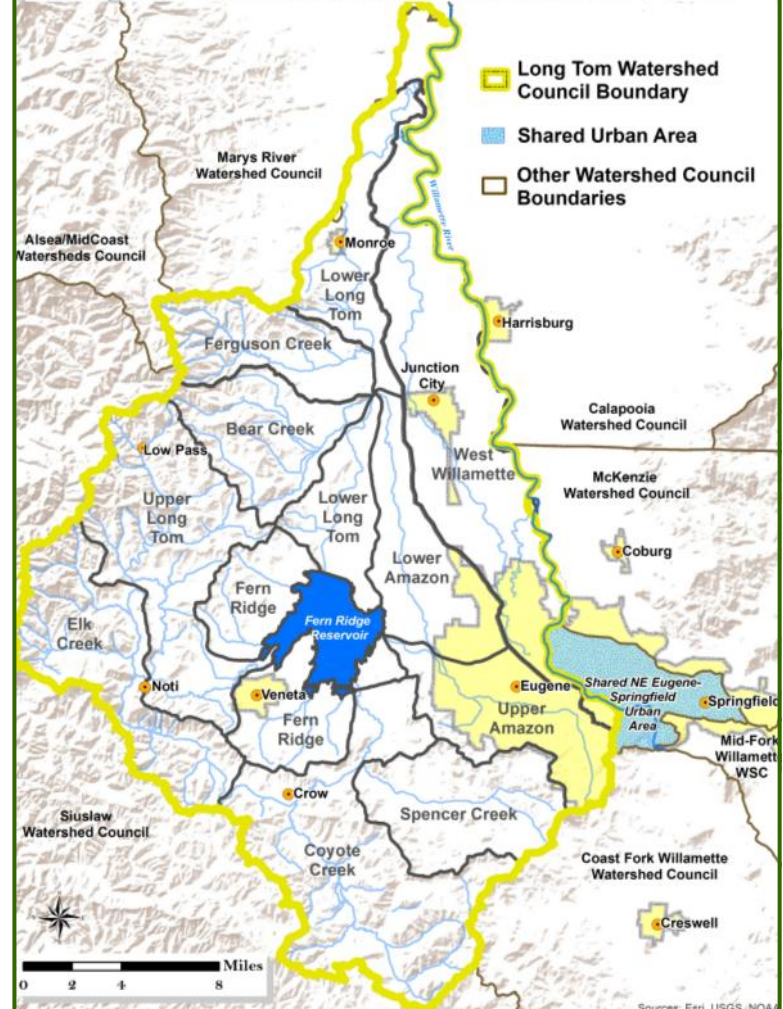
At Large

Mike Brinkley, *Treasurer*
Deborah Saunders Evans,
Past Chair
David Turner, *Vice-Chair*

Amazon

Alan Dickman
David Ponder
Therese Walch, *Secretary*

Long Tom Watershed Sub-basins & Area of Work



Council Staff Contacts

Dana Dedrick, *Watershed Coordinator/E.D.:* 541-338-7055
Clinton Begley, *Development & Communications:* 654-8965
Rob Hoshaw, *Operations Manager:* 338-7060
Jed Kaul, *Fish Biologist:* 338-7058
Katie MacKendrick, *Ecologist:* 338-7033
Sarah Whitney, *Urban Habitat & Stormwater:* 654-8965
Kathryn Rifenburg, *Outreach & Education:* 654-8965
Heidi Heisler, *Fiscal Manager:* 338-7055
Brenda Cervantes, *Latino Outreach Program:* 338-7042

Goodbye *and* Hello to Amanda Wilson



Amanda has been LTWC's amazing part-time Fiscal Manager for the past eight years. During this time she's also worked as the Administrative and Fiscal Manager for the McKenzie Watershed Council (MWC) where she expanded her role to

working full time this month. Amanda has spent the last five months orientating and transferring her wealth of knowledge to Heidi Heisler as our new Fiscal Manager.

Amanda's relationship with both the Long Tom and McKenzie watershed councils helped facilitate the development of a recently signed Memorandum of Understanding (MOU) regarding joint work together. The purpose of the MOU is to establish a general collaborative framework for the councils to share staff, resources, information, and expertise when appropriate. The joint scope of work already includes a shared Stewardship Technician position in Christer LaBrecque, and we're also drafting a plan to share fiscal services. This means Amanda will still be available to share a couple hours of her expertise with LTWC each week.

Amanda and Heidi are an incredible and highly competent team, and we're elated we'll continue to have a few hours of Amanda's time and long-term knowledge to help us all keep building the strength and capacity of LTWC and our partner watershed councils over time. Thank you, Amanda!

Outdoor Project Tour Directions

Tues, May 26, 6 - 8p.m.

All welcome!

86801 Dukhobar Rd, Eugene

From Eugene/Veneta:

1. Turn south onto Greenhill Rd at intersection with Hwy 126.
2. Continue for 2 miles on Crow Rd.
3. Left on Dukhobar Rd

From Crow:

1. Head about 6 miles north of Crow
2. Right on Dukhobar Rd

Signs will be posted



Support LTWC's important work!



Please support local, active community solutions to restore clean water and enhance habitat for fish and wildlife. Your tax-deductible support allows us to do unique local work for this community! Invest, Restore, Inspire!

To Donate online, visit www.longtom.org
Click on **"Support Us"**