



LONG TOM WATERSHED COUNCIL

July 2006

Restoration Tour on the 25th!

5:45pm—8:00pm

www.longtom.org *Action Through Understanding* 541.683.6578

RESORATION TOUR & MEETING

July 25th, 2006

5:45pm **Welcome & Introductions**

Will Bondioli, Vice-Chair, Steering Committee

6:00pm **Restoration Priorities**

Ed Alverson, The Nature Conservancy—invited

6:20pm **Fish Passage in Upper Coyote Creek**

OUTDOOR TOUR

Hal & Kathy Noble, Landowners

Cindy Thieman, Projects Coordinator

7:20pm **Announcements & Adjourn**

All Council Members

Next Meeting!

ANNUAL

MEETING

October 15th

or October 16th

5:30 ~ 8:00 p.m.

Our Mission

The Long Tom Watershed Council serves to improve water quality and watershed condition in the Long Tom River basin through education, coordination, consultation, and cooperation among all interests, using the collective wisdom and voluntary action of our community members.

Council's Restoration Priorities

Dry Conifer/Hardwood Forest

Focal species¹: acorn woodpecker, chipping sparrow, western wood peewee, white-breasted nuthatch, Northern spotted owl, southern alligator lizard, sharptailed snake, western gray squirrel, red-legged frog, wayside aster.

Status and Priority:

Dry Conifer/Hardwood forest includes two types - Woodland/Shrubland, characterized by scattered conifer or scattered oak and conifer with a significant native shrub component and a sparse canopy, and Closed Forest characterized by conifer (ponderosa pine and incense cedar) and broad leaf evergreens (madrone, chinquapin, and some oak).

Historically, both of these forest types were widespread in the watershed, covering much of the Coast Range foothills. A significant amount of this habitat has been lost by conversion to forestry or agriculture, or invasion of Douglas fir, which is most likely due to fire suppression. Dry conifer and hardwood forests provide habitat for a particularly diverse assemblage of species, and restoration is a priority due to the large number of species that depend on it.

Geographic Priorities:

Please also refer to the associated map for this habitat.

Between approximately 500' and 1,000' elevation zone of the southern and western Coast Range foothills surrounding the watershed.

Within the priority areas, TNC portfolio sites are specific known opportunities.

Possible Project Types:

Vegetation Management (VM): Similar to those for Upland Prairie & Oak Savannah habitat, but especially: limit conifer invasion; thin trees; plant for species diversity based on what site historically supported; controlled burning (CB)². Include specific habitat requirement of rock outcrops for the southern alligator lizard.

Old Growth Forest

Focal species¹: Pileated woodpecker, olive-sided flycatcher, Vaux's swift, marbled murrelet, spotted owl, great gray owl, Oregon slender salamander, American marten, red tree vole, Townsend's big-eared bat, red-legged frog.

Status and Priority:

This habitat is less of a priority as it is already somewhat protected and managed for habitat values by BLM, ODF, and there is not a significant amount in the Long Tom Watershed relative to other basins.

Geographic Priorities:

BLM Late Successional Reserves, state-owned lands, and forest areas adjacent to those or adjacent to other projects.

No council map has been created for this habitat at this time.

Possible Project Types:

Old-growth conifer forest conservation.

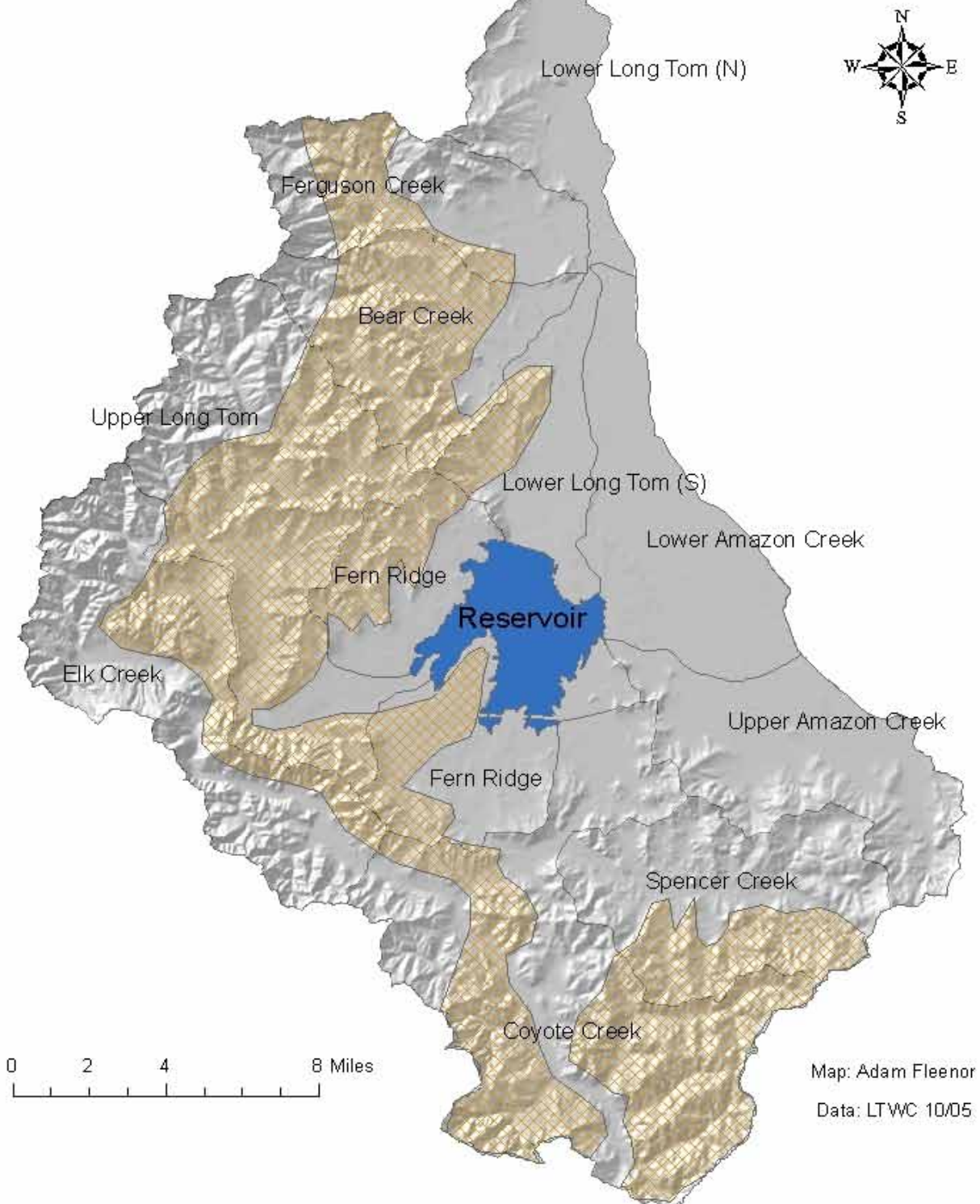
What habitats do you have and could you enhance them?

Please call Cindy at 683-2983

Council Priorities Map

Terrestrial

Draft Priorities: Dry Conifer/Hardwood Forest



Meeting Backgrounder

Bear Creek Fish Passage & Riparian Enhancement Project

Landowners: Hal & Kathy Noble

Implementation Period: September 2005– June 2007

We will be visiting a project this month that will be implemented later this summer. This will give Council members an opportunity to see a project before and after major restoration work is done. This site contains two fish passage barriers on Bear Creek, a major tributary in the Coyote Creek sub-watershed. One barrier is an undersized, perched culvert, which is a velocity barrier during high flows and a vertical barrier for cutthroat trout during lower flows. The second one is an irrigation dam, which is a vertical barrier due to the flash boards which are currently installed year round and the concrete sill of the dam which has created a scour hole below it.

In the early 1900's, the stream was re-routed into a straight channel. As a result, the stream has down-cut 8 –10 feet, has severe bank erosion, and is disconnected from its historic floodplain during most high-water events. Past grazing practices have also damaged stream bank integrity, prevented native shrubs and trees from establishing, and led to a riparian area dominated by non-native blackberry.

The combination of channel straightening and lack of riparian trees has led to poor instream habitat complexity. This stream segment has low pool frequency, low sinuosity, few gravel deposits, and little large woody debris. Associated water quality problems include sediment loading from bank erosion and stream heating in the summer due to lack of shade.

Project Objectives

- Provide access to 5 miles of cutthroat trout rearing and spawning habitat upstream
- Reduce bank erosion
- Eradicate or control blackberry and other invasive, non-native vegetation
- Increase native tree and shrub cover and shade
- Increase pool frequency and sinuosity
- Increase channel flood-storage capacity

Restoration Measures

- Replace culvert with bridge
- Remove irrigation dam
- Install rock weirs to prevent head cut initiation
- Install infiltration gallery to replace dam pool for irrigation withdrawal
- Reduce stream bank slopes and create stream side terraces in several locations
- Fence livestock from stream and install off-channel watering
- Plant stream side with native trees and shrubs

What can you do about the health of the stream running through your place?

Call Cindy at
683-2983
to discuss project possibilities

Council Business

Non Profit Development of the Long Tom Watershed Council

by Dana Erickson

Steering Committee has passed the draft version of our By-laws and Articles of incorporation. The comment period is now open through July 30th. We will have copies of the By-laws and take feedback at the July Council meeting. **THIS WILL BE YOUR LAST CHANCE TO COMMENT.**

Please send comments on the By-laws to the Council office by mail, phone, or email. Steering will review, make changes, and finalize them for filing at their August 10th meeting.

Council Meeting Notes

June 25th, 2006

Amazon sub-watershed

Historic Coyote Creek Restoration Tour at Art Johnson's property

Presenter: Jock Beall, USFW

No notes were taken as the meeting was a walking tour.



Above: This culvert will be replaced with a bridge for fish passage .

Left: This bridge on the Noble's property will be removed for fish passage .

*Action
Through
Understanding*

Interested in other watershed councils in Oregon?
Network of Oregon Watershed Councils www.oregonwatersheds.org

Volunteer Recognition

A Great Big Thank You!

We want to send out a huge round of applause for our macro-invertebrate monitoring volunteers that helped 2004-2006. These folks bushwhacked through poison oak, hiked up and down steep slopes, and viewed some truly wonderful streams up close and personal with us while collecting macro-invertebrate samples at 92 randomly selected sites around our watershed. Our gratitude goes out to:

Rolf Anderson
Stephanie Astorino
Jonathan Brown
Barbara Dumesnil
Jackie Fern
Adam Fleenor
Jenny Getty
Len Gillette
Bob Hager

Liz Myers
Lucy Murr
Allison Nabours
Chris Pendergrass
Jim Pendergrass
Sharmila Premdas
Brad Schallert
Desiree Tullos

We honestly couldn't have done it without you! Thanks!



Macro-invertebrate monitoring volunteer training session.

Watershed Involvement Opportunities

Ongoing Involvement

Calendar of Events

Tuesday, July 25th
Long Tom Watershed Council Meeting
5:45pm-7:20pm
OUTDOOR TOUR

Sept 7 Eugene 10:00am-2:00pm
Well Water Clinics
FREE Water Testing
Contact: 682-4243

Friday, August 11th
WREN Children's Dragonfly Walk 10:00am
FREE
Join dragonfly experts Steve Gordon and Cary Kerst for a walk to learn about the biology, ecology and behavior of the Dragonfly. Meet at the Wetland Project Office on the NE corner of W. 11th & Danebo.
Register: Holly McRae 683-6494.

Saturday, August 12th
WREN Dragonfly Walk 1:00pm
FREE
Meet local experts, and authors of "Dragonflies & Damselflies of the Willamette Valley: A Beginner's Guide" Steve Gordon and Cary Kerst for a walking tour.
Register: 683-6494 or email wew@wewetlands.org.

The Long Tom Watershed Council

Join us at our monthly Council meetings to find out more about us and how you could be involved. www.longtom.org/volunteer or call us at 683-6949.

StreamTeam

Help enhance the Amazon Creek Subbasin and the Willamette Watershed as well. Tuesday afternoons from 2:00 to 4:00 Stream Team needs volunteers to lend a hand at their native plant nurseries. We also have weekend work parties. To be added to the email notification list please contact Stream Team at 682-4850 or lorna.j.baldwin@ci.eugene.or.us

The Nature Conservancy

Saturday works parties :

2nd Saturday of each month

(February through November) 9:30-12:00. Meet on 18th at the pullouts 1/8 mile west of Bertlesen. Examples of projects include invasive species removal, native seed collection and nursery work. Please list our Saturday works parties : 2nd Saturday of each month (February through November) 9:30-12:00. Meet on 18th at the pullouts 1/8 mile west of Bertlesen. Examples of projects include invasive species removal, native seed collection and nursery work.

Oregon Trout would like to invite Council members to consider becoming Salmon Watch volunteers. Karen Wegner coordinates 33 field trips in the Eugene area and depends on volunteers to provide students with a great outdoor experience. Please check out their Web-site for more information, and to register for a training. Training in the Eugene area is Saturday August 12, 8-12 pm in Alton Baker Park. Questions? Please contact:

Karen Wegner
Regional Educational Coordinator
Healthy Waters Institute/Salmon Watch
Oregon Trout
230 S.W. 3rd Street
Corvallis, OR 97333
541.753.4280

Opportunities on the Web!

www.longtom.org

www.wewetlands.org

www.ortrout.org

Our Watershed & Council



*Action
Through
Understanding*



Steering Committee

Lower Long Tom

Brent Skiles
John Reerslev
Eric Freepons
Co-Secretary

Upper Long Tom

Will Bondioli
Vice Chair
Dennis Capps
Gary Nolan

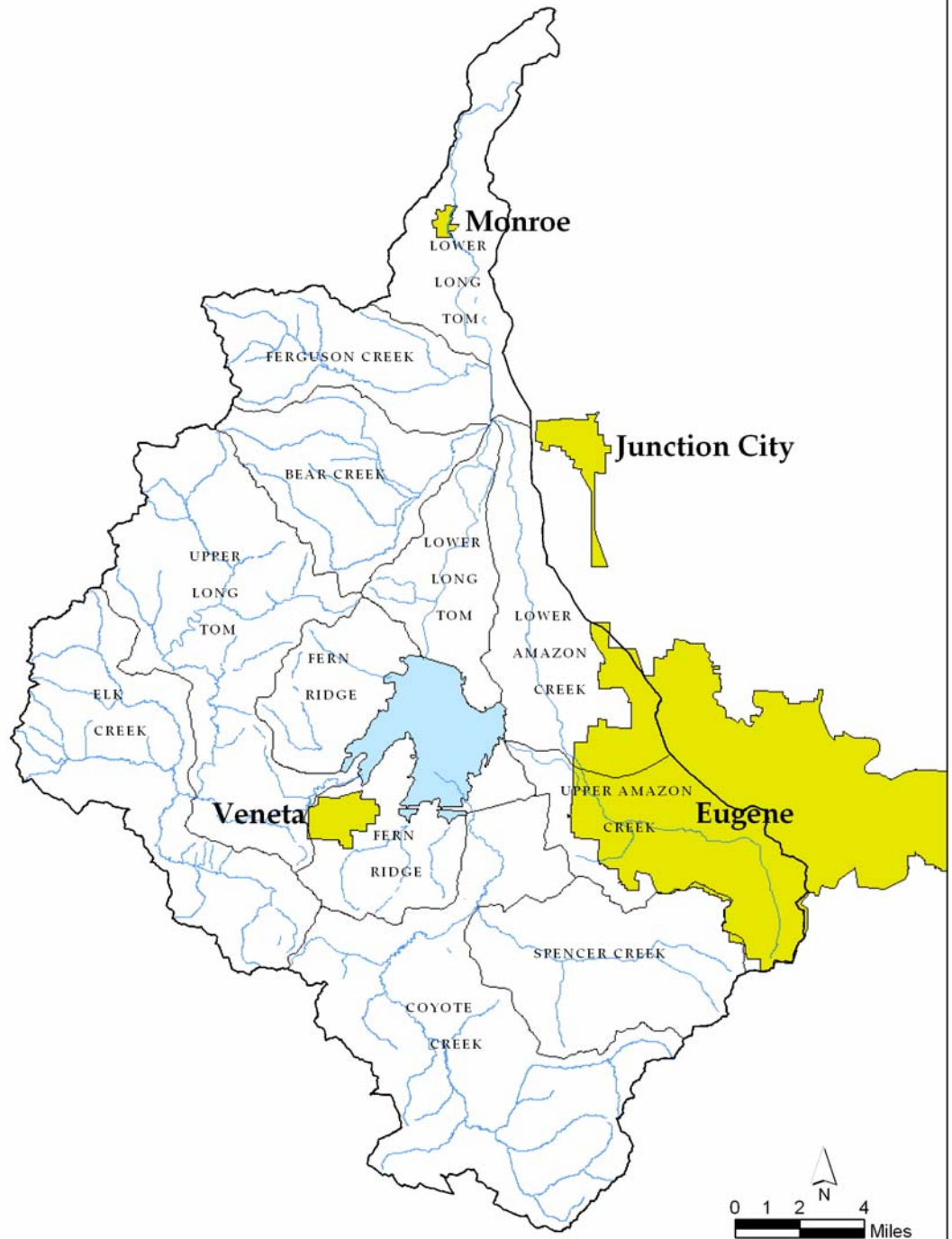
Amazon

Sarah Medary
Tina Fenley
Treasurer
Rich Margerum,
Chair

At Large

Ryan Collay
Desiree Tullos
Co-Secretary

Long Tom Watershed Ten Major Subbasins



Source: Long Tom Watershed Council, Brian Iosa 9/03

Staff

Projects and Monitoring

Cindy Thieman
(541) 683-2983

Coordinator

Dana Erickson
(541) 683-6578

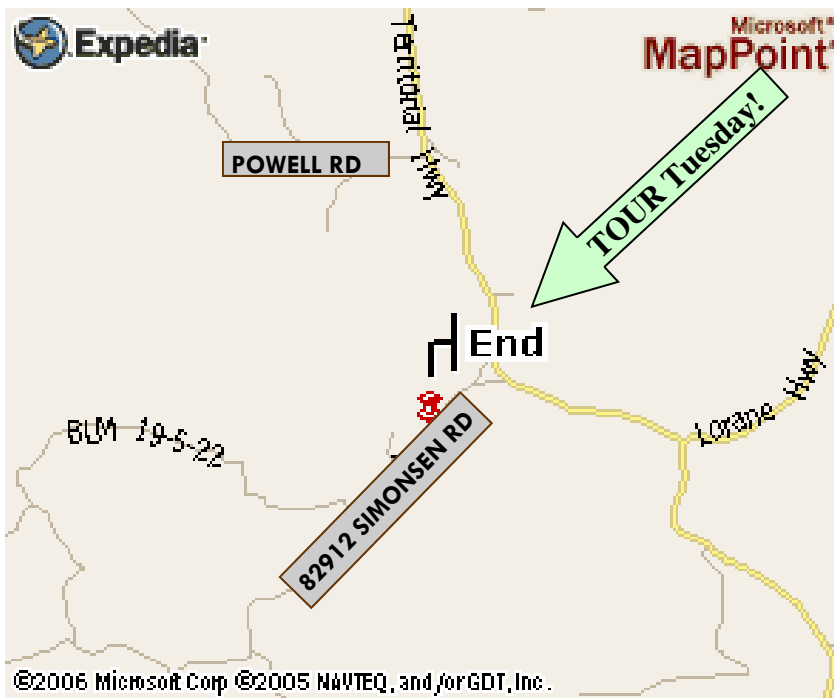
Assistant Coordinator

Jules Gordon
(541) 683-6949

Want to save your Council money on mailing costs?
Let us know you'd like an electronic version by emailing Jules at longtom.org!



Long Tom Watershed Council
Phone: 683-6578
e-mail: coordinator at longtom.org
www.longtom.org
751 S. Danebo Avenue
Eugene, OR 97402



	Distance	Time
Start: Depart from Eugene		
1: Head West on SR-126 [W 11th Ave]		
2: Turn LEFT (South) onto S Bertelsen Rd		
3: Keep STRAIGHT onto Bailey Hill Rd	2.9	0:04
4: Keep STRAIGHT onto Lorane Hwy	8.3	0:11
5: Turn RIGHT (North-West) onto Territorial Hwy	0.7	0:02
6: Turn LEFT onto Simonsen Rd	0.4	0:01
End: 82912 SIMONSEN RD	0.1	< 1 min
Total Route	14.4 mi	22 mins

Restoration Project Tour on this site at 5:45 p.m. Tuesday—July 25th