



LONG TOM WATERSHED COUNCIL
Bimonthly watershed news and meeting notice
SEPTEMBER 2009

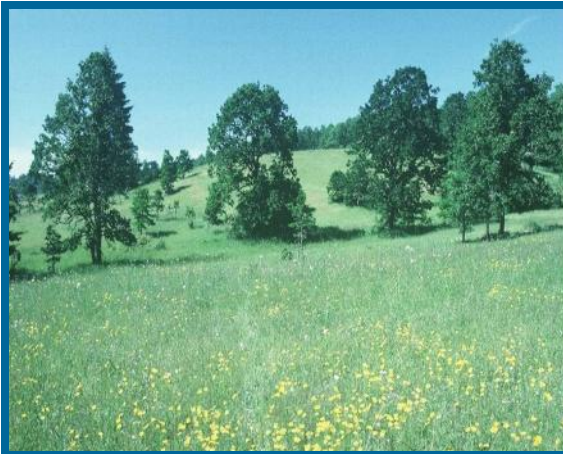
Action
Through
Understanding

YOU'RE INVITED!
Long Tom Watershed Council
12th Annual Meeting & Celebration

Saturday, September 12, 2009
12:30 p.m.—4:00 p.m.
Polyrock Ranch
84402 Territorial Hwy., Eugene

Oaks, Ranching
& Wildlife

Maintaining the
balance &
reaping the
rewards with a
long term vision



RSVP BY SEPT. 1st

To RSVP please mail payment
to the Council office.

Tickets \$10-\$20, sliding scale.
See page 4 for details.

Want to lend a hand?
Give us a call!
683-6949

FEATURING

- ♦ **Community potluck & main dish provided by Polyrock Ranch**
- ♦ **Raffle prizes! Music!**
- ♦ **Meet your watershed neighbors**
- ♦ **Guest speakers & rancher's perspective**
 - ♦ **Awards and presentations**
- ♦ **Oak habitat and creek restoration tours**

INSIDE:

Pg. 2 Jordan Creek Restoration Project Profile
Pg. 4 **CELEBRATION DETAILS!**
Pg. 5 Council Business Background/ Elections
Pg. 6 FY '08-'09 Annual Report

Pg. 8 2009 Restoration Projects Snapshot
Pg. 9 Model Watershed Program and Awards
Pg. 10 Our Watershed and Council
Pg. 11 Watershed Calendar & Opportunities

The Long Tom Watershed Council serves to improve water quality and watershed condition in the Long Tom River basin through education, coordination, consultation, and cooperation among all interests, using the collective wisdom and voluntary action of our community members.

751 S. Danebo Ave., Eugene, OR 97402 • Phone: (541) 683-6578 • Fax: (541) 683-6993

www.longtom.org

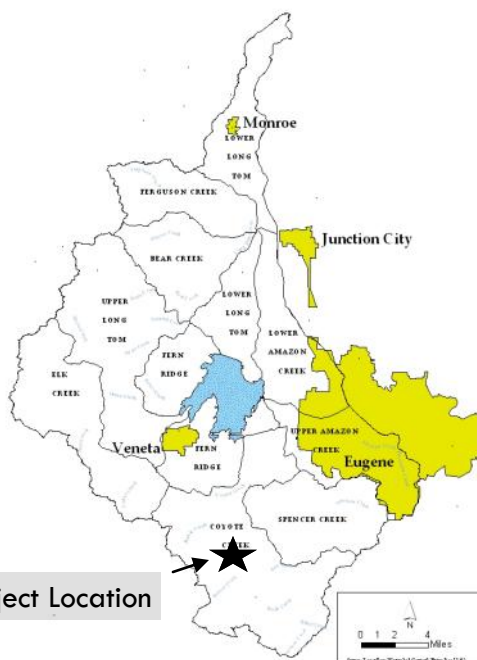


COYOTE CREEK FISH PASSAGE & JORDAN CREEK RIPARIAN ENHANCEMENT AT MATTSON'S

PROJECT BACKGROUND

This project was located at Mattson's on Coyote Creek, the southernmost sub-watershed in the Long Tom Basin. The culvert that channeled Coyote Creek under the ranch's driveway was undersized and blocked access to 46 miles of perennial streams—almost half of the sub-watershed. Many of these streams have good to excellent spawning and rearing habitat for cutthroat trout which made replacing this culvert a high priority. During high flows, water shot out of the culvert creating a velocity barrier for fish and causing significant bank erosion. During low water, there was a 2-foot drop that prevented trout from passing upstream.

The Mattson Ranch is also home to the lower half of Jordan Creek, which flows into Coyote Creek. In the early 1900's, part of the stream was re-routed around several pastures, creating a straight channel with poor fish habitat and steep eroding banks. Grazing had further eroded sections of the creek, prevented native shrubs and trees from establishing, and led to a riparian area dominated by non-native blackberry. There was little shade along the stream and water temperatures did not meet the state standard during the summer. High *E. coli* and nutrient levels in Coyote Creek pointed to the need to keep livestock out of Coyote Creek and its tributaries.



Before: An excavator removes an undersized culvert that blocked fish passage to 46 miles of upstream habitat.



After: Cutthroat trout and other native fish & amphibians can migrate freely up and down Coyote Creek.

PROJECT FUNDING & SUPPORT

Project Cost:	\$155,692
OWEB Grant:	\$114,167
In-kind & Cash Match:	\$41,525

Partners:

Oregon Watershed Enhancement Board
The Mattson Family, Landowners
Bureau of Land Management
Oregon Department of Fish & Wildlife
Many individual volunteers

RESTORATION TECHNIQUES

Replacing the culvert with a bridge was the most cost-effective and best restoration solution for fish passage on Coyote Creek. The concrete slabs for the bridge were salvaged from an ODOT detour bridge.

To exclude livestock from Jordan Creek, the landowners installed woven wire fencing along 3,500' of stream and established several off-stream watering facilities.

Blackberry in the riparian area was cut and spot sprayed. Volunteers and a professional crew planted over 5,000 native trees and shrubs along Jordan Creek over two winters. Willow and dogwood were planted close to the stream and drought tolerant species were planted higher up on the bank.



Before: Livestock prevented riparian vegetation from thriving.



After: Native vegetation rebounded after livestock were excluded

- ♦ Cutthroat trout, western brook lamprey, and other native fish and amphibians can now migrate freely between upper and lower Coyote Creek.
- ♦ Riparian plantings will provide shade for the stream and reduce water temperatures. The native species used in the project will also help stabilize the bank and create forage and cover for native birds, mammals, and amphibians.
- ♦ During high flows, the willows and dogwood will dissipate energy and provide areas of slower velocity in the floodplain for juvenile cutthroat trout.
- ♦ In the long run, trees from the upper bank will fall into Jordan Creek and provide additional cover and structure for fish.
- ♦ Excluding livestock from the riparian area will protect the new plantings, improve bank stability, and decrease *E. coli* levels in the stream.
- ♦ Contractors from the surrounding area were hired for all phases of the project, helping to boost the local economy.



Volunteers help plant trees along Jordan Creek.

The Long Tom Watershed Council serves to improve water quality and watershed condition in the Long Tom River basin through education, coordination, consultation, and cooperation among all interests, using the collective wisdom and voluntary action of our community members.

751 S. Danebo Ave., Eugene, OR 97402 • Phone: (541) 683-6578

www.longtom.org

Long Tom Watershed Council 12th Annual Meeting & Celebration

Saturday, September 12, 2009
12:30 p.m.—4:00 p.m.
Polyrock Ranch
84402 Territorial Hwy., Eugene

EVENT DETAILS

- ♦ Lunch tickets: \$10-20 sliding scale
- ♦ Raffle tickets: \$1 each
- ♦ RAFFLE PRIZES! *Mushroom Madness foray *Sailing Excursion on Fern Ridge and lunch *McKenzie whitewater rafting adventure *Wintergreen Farms - case of homemade strawberry jam *and More!
- ♦ Potluck: Main dish provided by Polyrock Ranch! Bring a dish to share —
A-M dessert, N-Z side dish or salad
- ♦ Elections: Vote for Steering Committee Members and changes to By-laws
- ♦ Bring your blankets or lawn chairs

AGENDA

- 12:30p Jordan Creek Restoration Tour
- 1:30p Event and Voter Registration
- 2:00p Music by the Eugene City Barnstormers
Welcome and Potluck
- 2:30p Speakers:
Deb Mattson, Polyrock Ranch
Peg Boulay, Wildlife Biologist
Pam Wiley, Meyer Memorial Trust
- 3:15p Watershed awards and appreciation
- 3:30p Elections & RAFFLE!!
- 4:00p Optional Tours: Oak walk/interpretation
or learn about Polyrock Ranch

Long Tom Watershed Council Annual Meeting Reservation Form



Please RSVP to the Council office by Tuesday, September 1st.

Name: _____ Phone: _____

Organization: _____ E-mail: _____

Would you prefer a vegetarian meal? ☐ Y ☐ N If so, how many? _____

Number of people (over age 5) for all-you-can-eat lunch _____ X \$10-20 each = \$ _____

What dish will you bring (A-M dessert; N-Z side dish/salad)? _____

Help us out, buy your raffle tickets in advance! # _____ x \$1/each = _____

Please make check payable to Long Tom Watershed Council (LTWC) and mail to:

751 South Danebo Avenue, Eugene, OR 97402

Questions? Please call Susan Oldland at 683-6949 or stewardship@longtom.org.

Council Business Backgrounder for Elections

STEERING COMMITTEE ELECTIONS

Every year, new Steering Committee members are elected to work on the Council Board. All members of the Council, that is every adult with an interest in the watershed who signs in at the Annual Meeting, help elect the slate of candidates.

The following members are up for second term re-election: Ric Ingham (second term, 3 years), Peg Boulay (second term, 1 year), Rich Reeves (second term, 1 year), Jim Pendergrass (second term, 3 years), Tony Stroda (second term, 1 year, Immediate Past Chair)

New members up for a first term are Steve Cole, Jason Hunton, Deborah Saunders, Chad Stroda:

Steve Cole is a native Oregonian and consulting forester for woodland and forestland owners in the watershed and region. Steve is interested in promoting practical and sustainable land stewardship; maintaining, improving and protecting water quality; and controlling invasive plant and animal species through education and eradication efforts. Steve graduated from OSU with a degree in forest management, and worked as an industrial forester for the Woolley family in Drain and later for the Giustina family in Eugene. He has been a consulting forester since 1992. Steve lives in Eugene; he has 3 grown daughters and a 15 year old son.

Jason Hunton was raised in Junction City. After over a decade away, Jason has recently married and returned home to manage his family's farm. Jason is interested in wetlands restoration, native species, fishing, wildlife photography, riparian areas and land banks. He is knowledgeable about agricultural needs and perspectives and looks forward to contributing to the Council's work.

Deborah Saunders Evans is a limnologist and long-time resident of the area with experience as a program director, policy analyst, and consultant. Deborah served on the Long Tom Watershed Council's first Interim Steering Committee and provided technical assistance in writing the council's first water quality monitoring grant. Deborah is interested in improving and protecting water resources and habitats, fostering communication between all stakeholders, outreach and education, and long-term organizational stability.

Chad Stroda is the 5th generation on the Stroda Brothers Farm in Monroe. After education in agriculture and machinery, Chad worked in California and Hawaii before returning home to work on the family farm. Chad will help bring an agricultural perspective to the Steering Committee.

Bios for current members volunteering for another term can be found on the website: http://longtom.org/documents/archive_reports/SCandStaffBios2008-09.pdf

Proposed changes to Bylaws, Section 2.3

The Council is requesting the Steering Committee members serve 4 years instead of 3 year terms. If adopted, the bylaws would read (new language underlined):

"The initial term of office for newly elected directors will be ~~three (3)~~ four (4) years, with some flexibility. Terms shall be staggered so that ~~approximately one-third (1/4)~~ of director positions will be up for election ~~each year~~. There is no limit to the number of terms a director may serve, however the second and consecutive terms will vary between one and ~~three~~ four years."



2009 Annual Report

Action through Understanding

Program Accomplishment Highlights

Watershed Restoration

We support private and public land managers in a range of restoration activities that improve fish passage, water quality, and habitat. We work on farms and woodlands as well as developed and natural areas. Projects are prioritized based on watershed data and the Council's Conservation Strategy.

- Completed 8 restoration projects of all types on private and public land.
- Initiated 6 new restoration projects and performed ongoing work on 8 others.

Sub-watershed Enhancement

We resolve known impairments to water quality and habitat by hosting learning and problem-solving sessions with landowners in each creekbasin. As people determine the solutions that work best for them, we assist with funding, project implementation, and ongoing stewardship.

- Finished Phase I outreach in Bear Creek
- Work beginning in Coyote Creek

Monitoring & Assessment

Monitoring and surveying help identify issues and potential projects and will also track the Council's progress over time.

- Fish Barrier Assessment (2008-10)
- Project and water quality monitoring (ongoing)

Community Involvement

The Council is a diverse and inclusive group representing all perspectives in the basin. We hold regular discussions on watershed health and aim to turn understanding into action. People say their involvement with the Council helps build community among neighbors and do the right thing.



- Hosted tours of 6 projects and 4 watershed meetings on water quality, invasive plants, wildlife areas, and toxins in the Amazon.
- Involved 124 volunteers in planting and mulching, 21 volunteers in research and committee work.

Who we are

Formed in 1997, the Long Tom Watershed Council is a 501c3 non-profit citizens' group comprised of people from all perspectives, and guided by a diverse Steering Committee. The Council has a successful track record of addressing local land and water issues in a proactive and positive manner.

Where we work

Amazon Creek
Bear Creek
Coyote Creek
Elk, Noti, Poodle Creeks
Fern Ridge Tributaries
Ferguson Creek
Lower Amazon Creek
Lower Long Tom River
Spencer Creek
Upper Long Tom River

Contacts

Tony Strada
President

Dana Erickson
Executive Director

Cindy Thieman
Restoration & Monitoring

(541) 683-6578

www.longtom.org



Funding and Support

Fiscal Year July 2008— June 2009

Board Members 2008-09

Lower Long Tom

Tony Stroda,
Chair
Jim Pendergrass,
Treasurer
Eric Freepons

Upper Long Tom

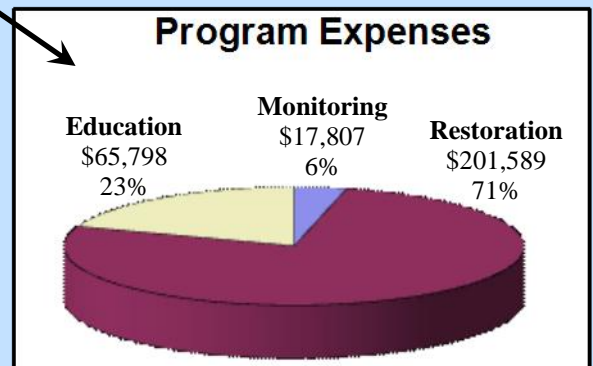
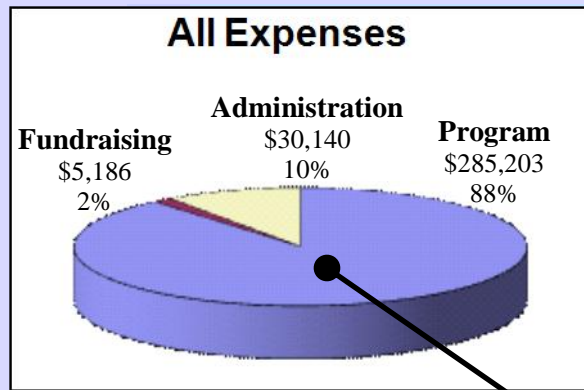
Patti Little,
Secretary
Ric Ingham,
Vice-Chair
Carl Harrison

Amazon

Peg Boulay
Eric Wold
Brad Taylor

At Large

Rich Reeves
Kat Beal
Kim Carson



Major Funding Partners

Public

- Bureau of Land Management
 - City of Eugene
 - City of Veneta
 - DEQ
- Lane Council of Governments
 - OWEB

Private

- Lane County Small Woodlands Association
- Meyer Memorial Trust
- National Fish and Wildlife Foundation
 - Oregon Trout
- Reerslev Farms, Inc
- Roseburg Resources Co.
- SureCrop Farm Services
- Swanson Group, Inc.

Fast Facts

- 88% of all spending supports program activities.
- Individual donations help the Council leverage approximately \$150,000 per year in state watershed enhancement funds, and help the Council compete for many other grants.
- Over 90% of the Council's grant funds are spent in Lane County.
- Every hour of staff time leverages an hour of volunteer time.

FY'09 Income and Expenses

Income

Grants	295,888
Donations-transferred	5,221
Donations	3,653
Annual Meeting	1,533
Program Service Revenue	152
Interest	4,162
Total Income	310,609

Expenses

Personnel	167,293
Restoration services/materials	131,363
Travel/Mileage	3,808
Professional Services	3,288
Education Supplies	2925
Insurance	3,325
Office/Occupancy	7,035
Training	955
Misc.	537
Total Expenses	320,529

Part of FY09 income is restricted for grant expenses to be incurred in FY10 and FY11.
Financial statements available upon request.

The Long Tom Watershed Council serves to improve water quality and watershed condition in the Long Tom River basin through education, coordination, consultation, and cooperation among all interests, using the collective wisdom and voluntary action of our community members.

Restoration Projects in 2009—a Snapshot

Recently Completed Council Projects:

- Gibson Riparian Enhancement – Removed reed canarygrass & planted native trees & shrubs around an existing wildlife pond.
- Harden-Hansen Riparian Restoration- Removed non-native blackberry & planted native trees & shrubs along a tributary to Spencer Creek.
- Historic Coyote Creek Riparian Enhancement at Johnson's – Planted native shrubs on 1½ stream miles
- Inman Creek Riparian & Wetland Enhancement at Anderson's – Removed blackberry & planted riparian trees & shrubs. Enhanced wetland vegetation around an existing wildlife pond.
- Owens Cr. Riparian and Stream Enhancement at McFadden's – Installed livestock exclusion fencing, eradicated blackberry, and planted trees & shrubs in the riparian area on 1/3 mile of Owens Creek. Established two off-stream water stations for livestock. Added 43 pieces of large wood to stream for fish habitat improvement.
- Spencer Creek Tributary Fish Passage Restoration at Jaros' – Replaced two undersized culverts with larger, countersunk culverts.
- Lower Long Tom Riparian Enhancement at Stroda's– Planted native trees along lower Long Tom River.
- Upper Poodle Creek Fish Passage & Riparian Enhancement at Heidt's– Installed livestock exclusion fencing & planted trees & shrubs on over ½ mile creek. Replaced an undersized culvert with a larger, countersunk culvert.

In Progress Council Projects:

- Atkinson Coyote Creek Tributary Enhancement - Restoration of stream to its historic location, riparian tree & shrub planting, and replacement of undersized culvert with a larger countersunk culvert.
- Gibson Grassed Waterway– Construction of a grassed waterway on a seasonal agricultural drainage to improve downstream water quality and decrease field erosion.
- Jordan Creek Fish Passage of Off-channel Irrigation Design (Technical Assistance) - Fish passage and off-channel irrigation withdrawal design at Polyrock Ranch on Jordan Creek.
- Lomatium Prairie & Floodplain Forest Restoration – Removal of invasive species and woody vegetation on 30 acres of wet prairie and thinning of 62 acres of oak woodland to improve oak savanna structure and understory plant community.
- Murphy Wet Prairie & Stream Restoration – Restoration of riparian and stream habitat through invasive species eradication, native tree & shrub planting, and large wood placement. Native prairie restoration through mowing, invasive species eradication, and fill removal.
- Stroda Grassed Waterway – Construction of a grassed waterway on a seasonal drainage running through a Christmas tree farm to improve downstream water quality and decrease field erosion.
- Stroda Fish Passage Design (Technical Assistance) - Fish passage design for the Stroda Drop Structure at Long Tom River.
- Top Lake Riparian Enhancement – Installation of livestock fencing, off-stream water station, riparian planting, and invasive species control along a pond that feeds Jordan Creek.
- Wild Iris Ridge Upland Prairie Restoration, Phases 2 & 3– Restoration of upland prairie and oak savanna through invasive species eradication on over 100 acres.
- Winter Green Farm Pond Enhancement & Invasive Species Control-Creation of amphibian breeding habitat, riparian enhancement, and oak savanna restoration adjacent to Poodle Creek.

Recently Initiated Council Projects:

- Deck Family Farm Fish Passage & Riparian Enhancement – Replacement of an undersized culvert with a bridge on Owen's Cr. Livestock exclusion fencing & native tree & shrub planting on Turnbow Cr. Construction of off-stream water stations and manure storage facilities.
- South Fork Ferguson Creek Fish Passage Enhancement – Replacement of undersized culvert with larger, countersunk culvert.
- Upper Poodle Cr. Fish Passage & Stream Enhancement at Heidt's- Second phase of fish passage and stream enhancement. An undersized, perched culvert will likely be replaced with a bridge and a section of stream will be reintroduced to its historic location.

Model Watershed Program and Awards

Going long-term in the Long Tom Watershed!

As many of you know the Long Tom Watershed Council formed in 1998 as a result of citizen meetings through 1996 and 1997. A group of very diverse people and organizations has participated ever since. One of the first things this “watershed community” did was assess watershed conditions, collect water quality data, and collect stream health data in many points around the watershed to determine what we might need to address, and where*. That has formed the basis of our restoration work for 10 years, and we have over 30 active or completed projects.

The first decade of the Council’s restoration and education work has been accomplished by over 67 Steering Committee members, 30 project landowners, 35 local contractors and businesses, 15 technical team members and advisors, over 400 volunteers, a few staff and interns, and multiple partner organizations, businesses and local governments. One of the benefits of this work is that we’ve shown each other, and others, what might be accomplished by learning about the watershed, committing to voluntary action to address problems, and working to get assistance and funding brought to our watershed.

Now we have the opportunity to take what we’ve learned and develop and implement a 10-year watershed restoration and monitoring strategy. After looking at how to do this from an ecological and community standpoint, Coyote Creek, Ferguson Creek, and Bear Creek stand out as key areas where we can do more projects and monitor our progress. This work will be made possible by a funding partnership with Meyer Memorial Trust (Willamette Initiative, Tributary Strategy), who has also partnered with Bonneville Environmental Foundation (Model Watershed Program) to ground the technical aspects of the program.

The work will be exactly what the Council has been doing, with a new level of quality and the sheer ability to do more. And it will include a feedback loop from monitoring that will help us adapt approaches as we learn what works and doesn’t. We are very excited to learn and work alongside landowners, scientists, and residents of the watershed in this endeavor. We hope this work will help us make a measurable leap in improving the watershed as we increase the pace, scope and effectiveness of our restoration and enhancement work.

*See the reports in the library at www.longtom.org.

2009 Watershed Awards

The Council is pleased to honor the following people and organizations at our Annual Meeting & Celebration!

Sustaining Entity: Private
Oregon Country Fair

Sustaining Entity: Public
City of Eugene

Project Landowner
Joe McFadden

Outstanding Volunteer
Ed Alverson

Project Contractor
Dennis Cole

Leadership Awards:

***An enduring thank you to our
outgoing Steering members
for their dedication and
service to the Council:***

Eric Freepons



Our Watershed & Council



**Action
Through
Understanding**

Steering Committee

Lower Long Tom

Tony Stroda, *Chair*
Jim Pendergrass,
Treasurer
Eric Freepons

Upper Long Tom

Ric Ingham
Carl Harrison
Patti Little,
Secretary

Amazon

Peg Boulay
Brad Taylor,
Co-Vice Chair
Eric Wold

At Large

Kat Beal
Kim Carson
Rich Reeves,
Co-Vice Chair

Contact Us:

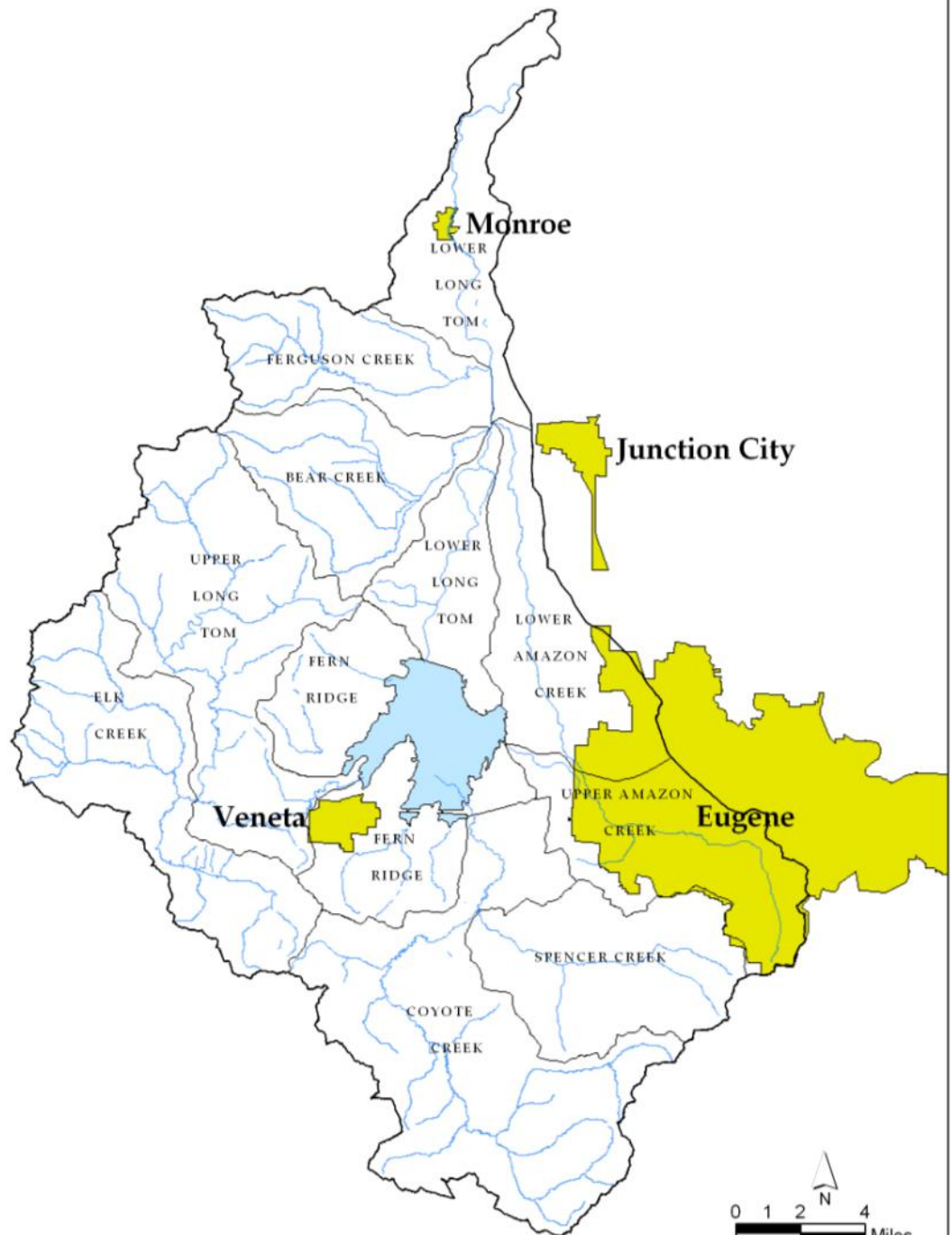
751 S. Danebo Ave.
Eugene, OR 97402

Phone: (541) 683-6578

Fax: (541) 683-6998

Web:
www.longtom.org

Long Tom Watershed Ten Major Subbasins



Source: Long Tom Watershed Council, Brian Ison 9/03

STAFF

Executive Director

Dana Erickson
683-6578

Projects & Monitoring

Cindy T. or Jed K.
683-2983/
683-6183

Fiscal Manager

Amanda Wilson
683-6949

Stewardship

Susan Oldland
683-6949

Watershed Calendar & Opportunities

Council Events

Steering Committee Meetings

Thursday, September 10, 2009; 6:00 p.m.

Thursday, October 1st, 2009; 6:00 p.m.

Annual Celebration!!

Saturday, September 12, 2009;

12:30pm — 4pm

Polyrock Ranch,

84402 Territorial Rd., Eugene

For more information and to RSVP,
contact Susan Oldland:

stewardship@longtom.org; 683-6949

WREN Wetland Wanders and More (cont.)

Bring a picnic lunch, blanket to sit on, and stay for the day. Event will occur rain or shine. This event takes place at 751 S. Danebo Ave. Parking will be on Isabelle St to the north of the site. Cost: \$5/WREN members, \$7/non-Members.

For more information call 683-6494.

October 4, 11 a.m.-2 p.m.

National Public Lands Day 2009 at Stewart Pond

Natural Area

National Public Lands Day is the nation's largest hands-on volunteer effort to improve and enhance public lands. In celebration of National Public Lands Day in the West Eugene Wetlands, volunteers will be at the Stewart Pond Natural Area. Gloves and tools will be provided. Volunteers will receive a free poster, t-shirt, coupon for admission to a national park, lunch, and the satisfaction of working to improve our public lands alongside fellow community members. Directions: From West 11th Avenue, turn north onto Bertelsen Road. Turn east onto Stewart Road. The event will be based at the parking lot on the north side of Stewart Road. Call 683-6494 for more information.

October 9, 9-10 a.m.

Wetland Wander at Golden Gardens Park

Golden Gardens is a 146-acre natural area park located in Eugene's Bethel neighborhood, at the intersection of Golden Gardens Street and Jessen Drive, north of Barger Drive. The park was formerly a gravel pit which provided material used in the construction of Belt Line Road and its overpasses. WREN will provide binoculars. Call 683-6494 for more information.

October 21, 7-8 p.m.

Spider Talk

How well do you know your eight-legged neighbors? Join John Parrott, OSU/Master Gardener and spider expert, to find out how spiders live and what the major types are that live locally. Meet at the West Eugene Wetlands yurt, 751 S. Danebo Ave. Cost: \$5/WREN members, \$7/non-members. For more information call 683-6494.

WREN Wetland Wanders and More

September 8, 9-10 a.m.

Wetland Wander at Willow Creek Preserve

Parking turnouts along West 18th are available for this wander through The Nature Conservancy preserve. WREN will provide binoculars. For more information call 683-6494.

September 12, 9 a.m.-2 p.m.

Family Exploration Day Stewart Pond Natural Area

Discover Stewart Pond with your family! WREN staff and volunteers will supply bug nets, field guides, and binoculars to promote exploration. Families are encouraged to bring a picnic lunch and enjoy independent discovery. Free! For more information: Carrie Karl at carrie@wewetlands.org or 683-6483.

September 26, 10 a.m.-4 p.m.

Native American Wetland Cultural Day

Kalapuya Elder Esther Stutzman is organizing a day of activities for all ages of the general public that includes story-telling, basket making demonstrations, drumming, dancing, camas oven demonstration, children's activities, a display and discussion of the building of the traditional Kalapuya canoe, and more.

**YOU'RE INVITED!! JOIN US FOR THE 12TH ANNUAL MEETING & CELEBRATION
SATURDAY, SEPT. 12TH: 12:30pm to 4:00 pm — POLYROCK RANCH, EUGENE**



Long Tom Watershed Council
Phone: 683-6578
e-mail: coordinator@longtom.org
www.longtom.org
751 S. Danebo Avenue
Eugene, OR 97402

You're Invited!!
12th Annual Meeting & Celebration
Saturday, September 12, 2009, 12:30 p.m.—4:00 p.m.
Polyrock Ranch, 84402 Territorial Hwy., Eugene

Want to carpool? Send us an email!

Staff will not be available to carpool since we need to leave early to set up. HOWEVER, send us an email by Sept. 10th if you'd like to carpool, and we'll send out an email to everyone interested so you can connect! EMAIL: stewardship@longtom.org.

Directions to Council Office from Eugene:

Follow W. 11th west toward Florence;

One signal past Beltline Rd. is Danebo Ave., turn right;

The first driveway on your right after the Hertz dealership and Amazon Creek is the Wetlands Partnership Office (white sign) and leads up a small hill to a red ranch house (Council office).

Directions to Polyrock Ranch:

Take West 11th Ave. (Hwy 126) to Crow Rd. and turn south;

Stay on Crow Rd. for 8.2 mi.;

Crow Rd. terminates at Territorial Hwy.; turn left.

3.1 mi. past the intersection of Crow Rd. and Territorial Hwy., you will see the Polyrock Ranch/ Lost Creek Organic Farm sign. Turn right.

Follow the signs to the tour and event site parking.