

Project Tour Invitation on Private Property

Tues, June 30, 6 - 8:00 p.m. at Thermo Fisher Scientific

**“Trout Friendly Landscapes:
functional, healthy & attractive options for businesses”**



Photo: Panorama of the retention pond at Thermo Fisher Scientific after it was recently planted last year. This site treats over 1 acre of stormwater, and now hosts numerous healthy and attractive native plants.

Topics:

- How Trout Friendly Landscape (TFL) designs improve water quality & increase habitat both on site and in local streams
- Ways LTWC works directly with business owners to implement functional designs that align with the goals of the business
- How TFL can increase employee happiness and productivity
- Why voluntary stormwater retrofits are necessary to improve water quality in our watershed

Speakers:

Allen Hall, Lead Facilities Maintenance Technician at Thermo Fisher

Stephanie Scafa, City of Eugene Waste Prevention & Green Building Analyst

Therese Walch, City of Eugene Water Resources Manager

Sarah Whitney, LTWC Urban Habitats & Stormwater Specialist

Free and open to all

Tour is outdoors

Light refreshments provided

**Hosted by Therese Walch
and Lindsay Reaves, LTWC
Board Members**

**For more info, Rob:
338-7060 or
operations@longtom.org**

more info on next page

The Long Tom Watershed Council serves to improve water quality and watershed condition in the Long Tom River basin and surrounding drainages through education and collaboration among all interests, using the collective wisdom and voluntary action of our community members.

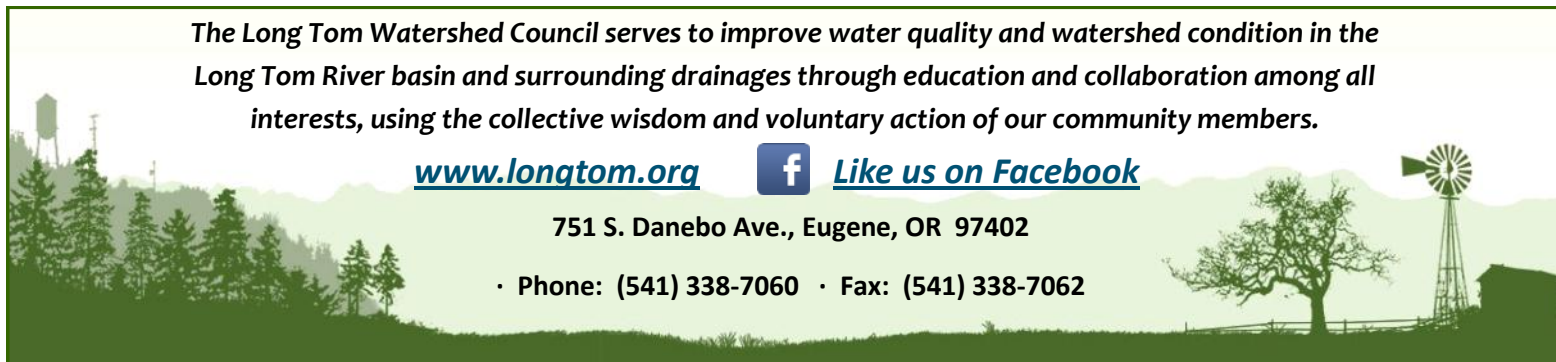
www.longtom.org



[Like us on Facebook](#)

751 S. Danebo Ave., Eugene, OR 97402

• Phone: (541) 338-7060 • Fax: (541) 338-7062



June 30 Project Tour: “Trout Friendly Landscapes: functional, healthy & attractive options for businesses”

6 - 8 p.m. Thermo Fisher Scientific, 29851 Willow Creek Rd. (directions on back)

Join the Long Tom Watershed Council on June 30th for its very first tour of an urban habitat project at Thermo Fisher Scientific. Winner of the 2015 Mayor’s Bold Steps Award, Thermo Fisher (formerly Life Technologies & Molecular Probes) partnered with LTWC to implement several landscape designs to improve water quality and habitat, including the installation of a nearly 20,000 sq. ft. retention pond. This innovative design consists of native plants and a long swale that filters and infiltrates rainwater, reducing pollutants going into waterways from adjacent parking lots, roofs and lawns. Over one acre of stormwater is treated before it flows into nearby Willow and Amazon Creeks, and the West Eugene Wetlands.

This functional, habitat-friendly design has also resonated with Thermo Fisher’s employees, many of whom walk the grounds on their break time to enjoy the abundant spring-time flowers and watch for the birds and wildlife that utilize the pond.

This project is part of LTWC’s Urban Waters & Wildlife Program, which works with commercial and industrial businesses to upgrade their landscaping to the latest Best Management Practices, including low impact development features that use soil and plants to capture pollutants before they enter our local waterways. The City of Eugene provides match funds and help for these projects along the way.

We encourage business owners interested in learning more about these opportunities to attend the June 30 tour or call **Sarah Whitney, Urban Habitats & Stormwater Specialist, at 541-654-8965.**



Native plants including willows, lupine, camas, snowberry, sedges, rushes, willows, and grasses help filter stormwater as well as provide habitat value.

Farewell and Thank You, Brenda!



We’d like to bid a fond farewell to Brenda Cervantes, who worked as our Program and Operations Assistant for over a year. She recently accepted a position with the City of Florence Public Works Dept. as their GIS Technician. Brenda played a key role in educating local Spanish speakers in the yard care and landscape business. This is the only program in the Eugene area that provides bilingual outreach specific to pesticide and stormwater education. Kathryn Rifenburg, our Outreach & Education Specialist, is doing a great job keeping the momentum going for this great project. Brenda also helped with office operations, GIS mapping, and worked with a number of our volunteers. Before joining our staff, Brenda lent her talents both as a volunteer and temporary staff for several years. Thank you, and best wishes, Brenda! We’ll miss your enthusiasm and warmth!



Support the Unique Work of LTWC Today!

When you give to the Long Tom Watershed Council, you're making an investment in the health of our local habitats, waterways, and our entire watershed community. Contributions leverage the significant voluntary participation from private landowners, volunteers, and grant funding from state, federal, and private sources.

This has been an exciting year for LTWC! Several local business owners are working with us to implement voluntary green infrastructure projects. We've secured competitive grants to open up more streams for trout migration, improve habitat along several Long Tom River tributaries *and* the Willamette River, improve habitat value for wildlife on rare oak and prairie habitats, and we're surveying and treating areas for a few highly invasive weeds. Not to mention we're still tracking the movements of nearly 600 cutthroat trout. And this is just a snapshot! We've also brought on a few new staff to increase outreach, communications and support across the watershed.

Tax-deductible gifts like yours are the seed money for the projects that support clean water, fish and wildlife. Please help us continue these exciting results! **Your gift by June 30 helps us meet our goal!**

Simple Ways to Give:

1. **Credit card:** visit www.longtom.org and click on **"Support Us"** to use our simple web form.
2. **Mail a check:** LTWC, 751 S. Danebo Ave., Eugene, OR 97402

Questions? Call Rob: 541-338-7060

Introducing Clinton Begley

Development & Communications Director

Clinton joined LTWC in April to assist in developing funding resources and strategic capacity. His efforts will help propel the growth and strengths of the organization while telling our stories of successes and challenges throughout the watershed.

Clinton has always been connected to natural resources and is particularly passionate about water. He is the third generation co-owner, along with his father, of his family farm in Northeast Missouri. He has been a whitewater kayaker for over 11 years, and it is an activity that has pushed him to explore and connect with watersheds across the country.

He has a bachelor's degree from the College of Forestry and Conservation at the University of Montana in Missoula and a master's from the University of New Hampshire in Durham. He's spent the last four years working across the Northeast, Southeast and Mountain West. Clinton is looking forward to exploring the mountains and waters of Oregon while putting down roots in the fertile soils of the Willamette Valley.

He's also looking forward to meeting many of you—the people who support this watershed council as donors, project landowners, volunteers, and interested community members. Of the folks he's had the pleasure to meet so far, Clinton is already impressed. He sees a variety of people bringing important perspectives and contributions to the work of LTWC, and the even-handed and thoughtful approach LTWC gives to achieving shared priorities.



Recent Gifts

Business League: Hunttons' Family Farm

Individual Donors: Mike Brinkley, Eugene Skin Divers Supply, Rik Huhtanen & Karen Scholler, Gary & Jo Holzbauer, Loeb Family, Keli Osborn, Pacific Ag Systems, Inc., Charles Ruff, Court Smith, Stroda Brothers Farm, Marion Tittle & Randy Sproul, In memory of Ted J. Allison (d. Nov 2013).

Taste the Watershed Events: Ninkasi Brewing Co.



Save the Date!

LTWC's 18th Annual Celebration

Thurs. evening, Sept. 10th at Deck Family Farm

Join neighbors and fellow community members for a family-friendly end of summer watershed celebration featuring a picnic dinner in the country, watershed awards, a fantastic speaker, and a project tour. This is our biggest event of the year, so don't miss it! More details and registration info coming soon at longtom.org and our **Facebook page**.

Photo credit: Deck Family Farm. The farm is about 7 miles west of Junction City near the intersection of High Pass & Turnbow Rds.



Nominations open for Board of Directors—due July 10

Might you, a colleague, or a friend be interested in helping to guide the watershed council for a term of 3-4 years? If you are interested, or know someone who might be, please **send a letter of nomination** to the **Nominating Committee** at the Council address (751 S. Danebo Ave, Eugene, OR 97402) or email to coordinator@longtom.org by **Friday, July 10**. The letter should include at a minimum your **name, contact information**, including **phone number**, and a **statement of interest**. The nominee will be sent a Board Interest packet with a brief application form. The Nominating Committee will present a slate of candidates on the website prior to the Annual Meeting, with information provided at the meeting. New Board members will be elected at the Sept 10th Annual Meeting. Please contact Dana Dedrick for more information: 338-7055.

LTWC Board of Directors

Lower Long Tom

Steve Horning, *Vice-Chair*
Jim Pendergrass, *Chair*
John Reerslev

Upper Long Tom

Cary Hart
Lindsay Reaves
Charles Ruff

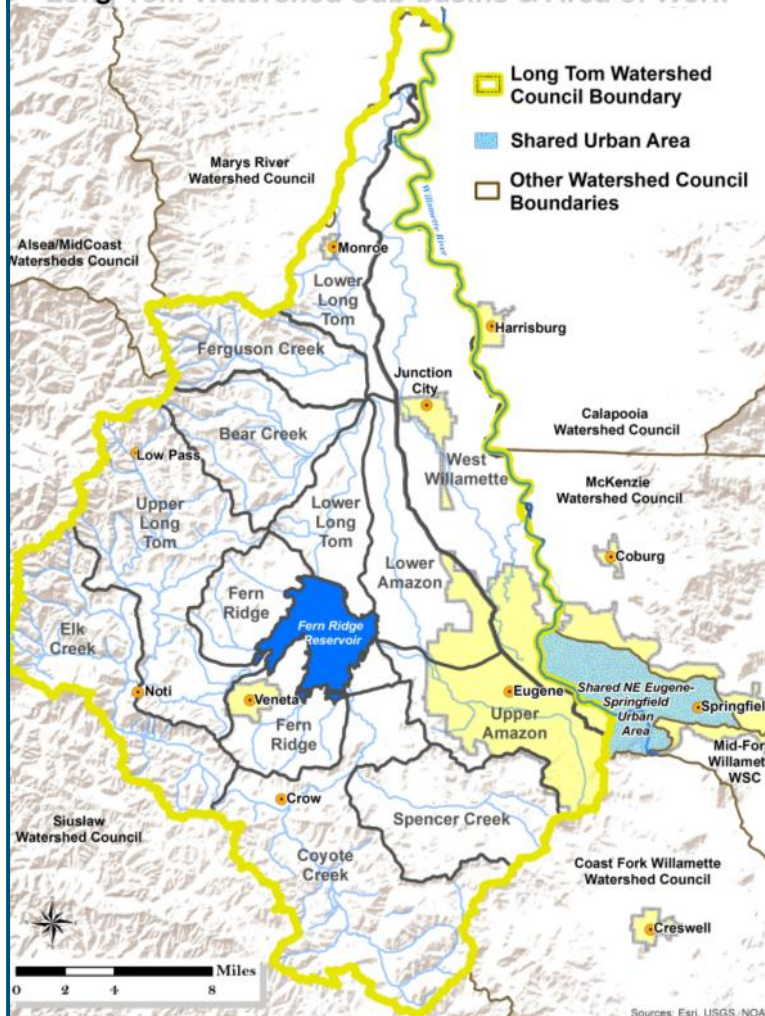
At Large

Mike Brinkley, *Treasurer*
Deborah Saunders Evans,
Past Chair
David Turner, *Vice-Chair*

Amazon

Alan Dickman
David Ponder
Therese Walch, *Secretary*

Long Tom Watershed Sub-basins & Area of Work



Council Staff Contacts

Dana Dedrick, *Watershed Coordinator/E.D.*: 541-338-7055
Rob Hoshaw, *Operations Director*: 338-7060
Clinton Begley, *Development & Communications*: 654-8965
Jed Kaul, *Fish Biologist*: 338-7058
Katie MacKendrick, *Ecologist*: 338-7033
Sarah Whitney, *Urban Habitat & Stormwater*: 654-8965
Kathryn Rifenburg, *Outreach & Education*: 654-8965
Heidi Heisler, *Fiscal Manager*: 338-7042
Christer LaBrecque, *Stewardship Technician*: 338-7045

Help stop the spread of invasive Parrot's Feather!

Parrot's Feather (*Myriophyllum aquaticum*) is an aquatic invasive that grows in ponds, sloughs, streams, and other calmer waterways. The leaves appear bright green and feathery, ranging from about 1/2 to 2" long. Flowers are small and white. It can grow up to a foot out of the water and resemble a small fir tree.

This plant can form dense mats of vegetation, and infestations can significantly decrease habitat value by competing with native vegetation, altering the native plant community, impacting fish populations, altering water chemistry, and reducing recreational value.



Photo Credit: Graves Lovell, AL DCNR

The best control method is prevention and the removal of small colonies before they spread. Parrot's Feather can be removed by hand, but please use caution as the plant can regenerate from fragments. You can report Parrot's Feather and other noxious weeds at oregoninvasiveshotline.org.

Office Donation Needs

As the Urban Waters and Wildlife Program staff settle into their office space near Willamette Street they could use the items below. If you have an item you'd like to donate, **please contact Kathryn at outreach@longtom.org or 541-654-8965**. We'd be grateful for your help!

- | | | | |
|------------------|------------------------|----------------|-------------------|
| • Vacuum | • Trash cans with lids | • Lamps | • Plants |
| • Recycling bins | • Cleaning supplies | • Paper cutter | • Rugs (any size) |

Tour Directions

Tues, June 30, 6 - 8 p.m.

Project at Thermo Fisher Scientific
29851 Willow Creek Rd, Eugene

- Thermo Fisher is located in west Eugene.
- From W. 11th Ave / Hwy 126, turn south onto Willow Creek Rd at the light across from the Hertz car dealership.
- Thermo Fisher is the campus on the west side of the road, approximately 1/2 mile south of the intersection with W. 11th Ave.
- **Turn onto Pitchford Ave to park (not at the main Thermo Fisher sign)**
- **Signs will be posted**

