



Annual Report

2013 Highlights

Action
Through
Understanding



Our 1st urban stormwater project!



Found trout in Amazon Creek!



Received 4 awards!



Restoring fish & wildlife habitat

- 20 ongoing or completed restoration projects to improve **stream & riparian habitat, fish migration, oak & prairie habitat, and wetlands.**
- Planted 85,000 **native trees & shrubs** on 32 acres



Leading urban stewardship

- Initiated **Trout Friendly Landscape** incentive program for property owners
- Completed our **first project** to filter stormwater runoff at Davis Commercial Properties
- Collected **second year of pesticide data** in Amazon Creek
- Found 3 **cutthroat trout in Amazon Creek!**



Connecting the community

- 176 people attended 6 **watershed learning events** and **guided tours.**
- More than 175 **volunteers** contributed over 3,700 hours of **service!**
- Developed **relationships** with new landowners, creating future restoration possibilities.



Local & international awards

- **Top-tier** watershed council in Oregon (OWEB)
- Our Willamette Model Watershed **partnership** received **prestigious** Theiss **International RiverPrize**
- U.S. Army Corps recognizes LTWC & landowner Tony Stroda for **Outstanding Civilian Service**
- Received **Bring RE:think certification** for sustainable office



Learning through science

- 20 volunteers tagged and tracked 88 **cutthroat trout** in this 3rd year of our Cutthroat Trout Migration Study.
- Collected **water temperature** data at 26 sites across the watershed
- Measured **project effectiveness** on 13 stream reaches.

The Long Tom Watershed Council serves to improve water quality and watershed condition in the Long Tom River basin through education, coordination, consultation, and cooperation among all interests, using the collective wisdom and voluntary action of our community members.

Contacts: • Jim Pendergrass, Board Chair • Dana Dedrick, Watershed Coordinator/Executive Director

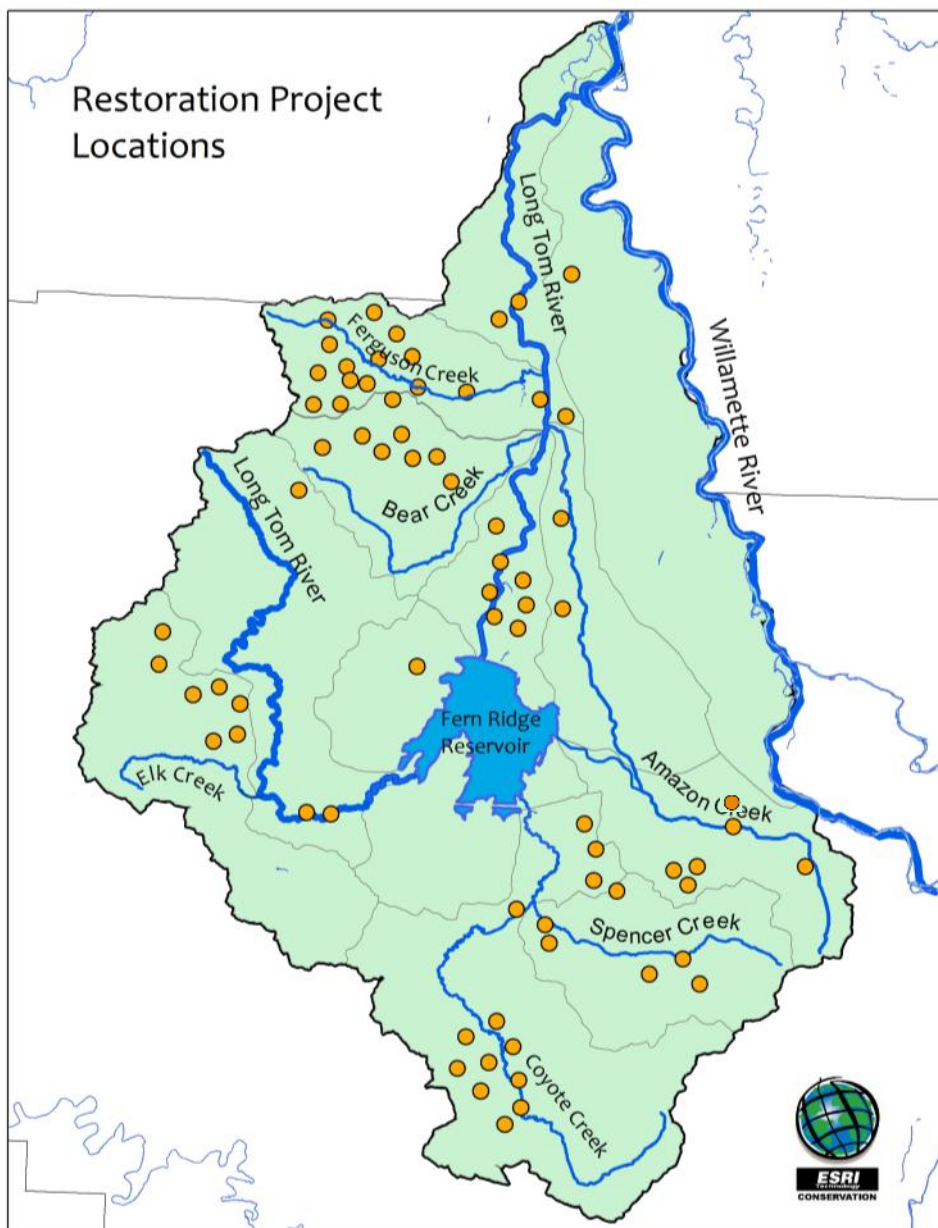
• (541) 338-7055 • www.longtom.org • Like us on Facebook!

Thank you to our supporters!

Project Landowners (52)

These wonderful folks completed restoration on private land

Kristen Anderson (2007)
Paul Atkinson (2008)
Barrows Family (2012)
Al & Wanda Bartlett (2005)
Will & Kathy Bondioli (2002)
Boy Scouts, Oregon Trail Council (2011)
Jim & Maria Bradshaw (2012)
Ted & Linda Brown (2012)
Bureau of Land Management (2010, 2011, 2013)
Ryan Collay (2001)
Davis Commercial Properties (2012)
John & Christine Deck (2010)
Ron & Pam Detering (2001, 2013)
Paula & Curtis Erickson (2009)
City of Eugene (2001, 2005, 2007, 2009)
Scott Gibson (2007, 2008)
Giustina Land & Timber (2013)
Jack Gray (2006, 2008)
Trey & Tammie Hagen (2011, 2012)
Kent Hansen (2008)
Glen & Genie Harden (2008)
Dave & Marta Heidt (2007, 2010)
Gary & Jo Holzbauer (2003)
Hull-Oakes Land & Timber (2013)
Hunton Family (2005)
Rick Huhtanen & Karen Scholler (2003)
Derek & Diane Jaros (2007)
Art & Anita Johnson (2000, 2002, 2003, 2005, 2010)
Val & Ken Kime (2011)
Kurt & Mary Koehler (2011)



Lane County (2001, 2013)
Rick & Patti Little (2003)
Deborah & Alan Mattson (2005, 2007, 2011)
Joe McFadden (2008)
Cary Moffett (2005)
Rick Movsky (2002)
Ron & Janice Murphy (2008)
John & Gwen Neumeister (2003)
Hal Noble (2005)
Kathy Noble (2005)

Dave & Linda Schudel (2012)
Steve Sertic (2004)
Heather Sogge (2010)
Tad Sogge (2010)
Linda Stork (2006)
Stroda Family (2007, 2008, 2011)
Molly Templeton (2002)
Andy & Maryrae Thomson (2003, 2011)
Dave & Suzanne Turner (2005)
U.S. Army Corps of Engineers (2012)

Thank you to our supporters!

Individual Donors (87)

Lead Gifts (\$1,000 +)

Dick & Gretchen Evans, Art & Anita Johnson, Kurt & Mary Koehler Fund of the Oregon Community Foundation, Redtail Fund of the Oregon Community Foundation, In memory of Dan Graham

Major Gifts (\$250 +)

John Allcott, Rolf Anderson, Scot & Francine Berryman, Mike Brinkley, Karma's Forest Native Nursery, Lochmead Farms, Gary & Jo Holzbauer, Derek Johnson, Organically Grown Co., Tom Lively & Megas MacDonald, Jim & Christine Pendergrass, Peter Ruffier & Lori Kieivith, Deborah Saunders Evans, Court Smith, David & Suzanne Turner

Supporters (up to \$250)

Jules Abbott, Ed Alverson, Philip Bayles, Jason Blazar, Peg Boulay & Bruce Newhouse, Barbara & Joe Bowman, Ted & Lindy Brown, Andy Burke & J. Ingrid Kessler, Erik Burke, Steve Cole, Rich & Jenny Coleman, Kurt Corey, Bela Dedrick, Joanna DeFelice, Emerald Acres, Dr. Doug Evans - Feline Thyroid Clinic, David & Duane Funk, Jenna Garmon, Roger & Karen Hamilton, Cary Hart, Cliff & Rod Herbert, Mike & Diana Hollingshead, Hummingbird Wholesale, Ric Ingham, Debra Johnson - in honor of the work you do, Sue Kacskos, Beth Krisko, Kim Leval & Pete Sorenson, Pat McDowell, Linda Modrell, David Moon & Joan Kelley, Laughing Stock Farm, John Moriarty, Max & Nicole Nielsen-Pincus, Ninkasi Brewing Co., Pacific Ag Systems, Inc., Betsy Parry, Sir Edgar Peara, Tenold & Karin Peterson, Nancy Pierce, Jonathan Plummer & Jean Jancaitis, David Ponder, Hugh & Sue Prichard, Lindsay Reaves & Tom Bauman, Charles Ruff, Rik Huhtanen & Karen Scholler, Steve Sertic, Michael Shippey, Kendra Smith, Rene Speer, Chad Stroda, Symantec Corporation, Shirlee Taylor, Transition Management, Therese Walch, Mary Ellen West, Kate & Brian Widmer, Eric Wold, Pamela Wright & David Hausam, In honor of Erica Benedict-Barta, In memory of Norma V. Allen, In memory of Nathan Dickman, In memory of Jan & John Johnson, Anonymous (5)

Business League (5)

Business Stewardship Investors (\$5,000 +)

Huntons' Family Farm, Ninkasi Brewing Co.

Business Partners (\$1,500 +)

Mountain Rose Herbs, Stroda Brothers Farm

Business Supporters (\$500 +)

Benton-Lane Winery, Reerslev Farms, Inc.

“One thing that struck me about the (Council) was their enthusiasm, passion, and interest in working to better the local watershed.” – Dick Evans, philanthropist



www.longtom.org



Board of Directors 2012-13

Amazon

Max Nielsen-Pincus,
Past chair
David Ponder
Therese Walch

Lower Long Tom

Jason Hunton
Jim Pendergrass,
Chair
Chad Stroda,
Vice Chair

Upper Long Tom

Sue Kacskos,
Lindsay Reaves
Charles Ruff

At Large

Mike Brinkley,
Treasurer
Steve Cole,
Secretary
Beth Krisko
Deborah Saunders
Evans, *Vice Chair*
David Turner

“Eating dinner beside the Willamette in Portland, it was humbling to think of the same water flowing by my farm (near Monroe) on the Long Tom River first, then through Portland on its way to the ocean. It supports trout and salmon the entire way.” –Tony Stroda, Stroda Brothers Farm

Grant* & Project Partners

Private

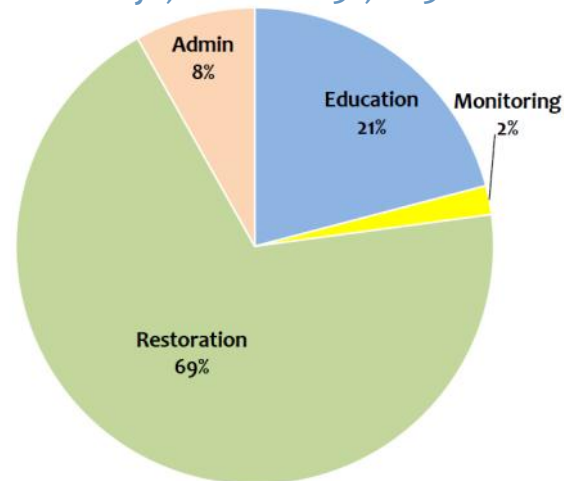
- Bonneville Environmental Foundation
- Esri (mapping software)
- Richard & Gretchen Evans
- McKenzie River Trust
- Meyer Memorial Trust
- National Fish & Wildlife Foundation
- Network of Oregon Watershed Councils
- Sure Crop Farm Service

Public

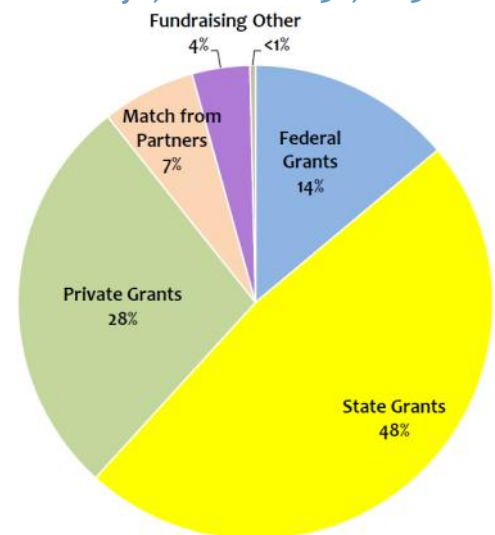
- City of Eugene
- City of Veneta
- Oregon DEQ
- Oregon Dept. of Fish & Wildlife
- Oregon Watershed Enhancement Board (OWEB)
- U.S. Army Corps of Engineers
- U.S. Bureau of Land Management
- U.S. Environment. Protection Agency
- U.S. Fish & Wildlife Service

* All grants are earned through competitive application processes

Expenses: \$745,543
July 1, 2012 - June 30, 2013



Funding Sources
July 1, 2012 - June 30, 2013



The Council: Formed in 1997, the Long Tom Watershed Council is a 501(c)3 non-profit citizens' group comprised of people from all perspectives, and guided by a diverse Board of Directors. The Council has a successful track record of addressing local land and water issues in a proactive and positive manner.

Staff: Dana Dedrick, Rob Hoshaw, Jed Kaul, Katie MacKendrick, Jason Schmidt, and Amanda Wilson