



# MOUNTAIN ROSE HERBS

## PROJECT DESCRIPTION

At 4020 Stewart Road, adjacent to Amazon Creek, Mountain Rose Herbs (MRH) installed a 500 sqft rain garden that manages 11,000 sqft of stormwater runoff from their primary parking area. Friends of Trees and staff planted 23 trees to help reduce heat on the property and expand the habitat function of the Creek. Shortly after these efforts, the existing retention pond was dredged, expanded and planted. The slopes around the pond have been re-wilded with appropriate native vegetation. Significant restoration work has been completed but there is still more to be done!



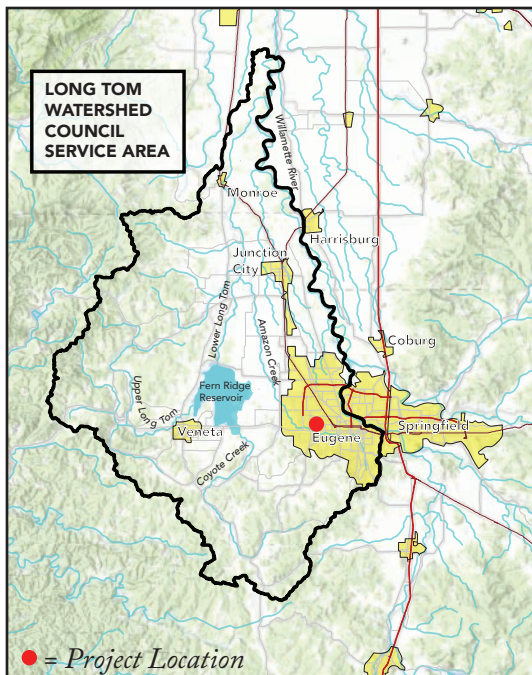
MRH is the first Salmon Safe Certified urban campus in the Southern Willamette Valley. Long Tom Watershed Council (LTWC) works closely with MRH to help them meet certification conditions which include increasing wildlife value and stormwater management while decreasing water use and impervious surfaces.



MRH's co-owners understand the impact that businesses can have on water quality and habitat, as well as the business case for being a good watershed steward.

*The above photos show the completed excavation of the pond and the tree planting process, both important aspects of re-wilding the site.*

MRH is a Business League Supporter of LTWC and was a finalist for the 2016 Eugene Mayor's Bold Steps Award.



*The photo above shows the finished rain garden that sits within a patch of lawn near a storm drain. The lawn and the curb from the parking lot was removed, the drain bypassed, and a depression was created for water to flow into. Native plants have been attracting bees and other pollinators ever since!*

## RESTORATION TECHNIQUES

**Detention Pond and Swale:** Captures and treats runoff from the entire four-acre site before it outlets into the adjacent Amazon Creek. To reduce pond maintenance and increase effectiveness, additional stormwater facilities have been added to pre-treat and reduce the amount of water entering the pond.

**Tree Preservation and Planting:** Provides a wildlife corridor between Amazon Creek and the adjacent wetlands in addition to providing additional stormwater management and urban heat island mitigation.

**Rain Garden:** Provides pre-treatment for stormwater from half of the primary parking lot. Regardless of twice-daily vehicle leak checks, elements from brakes, tires and road sediment are regularly captured in the rain garden. This facility decreases loading on the detention pond and swale.

## BENEFITS

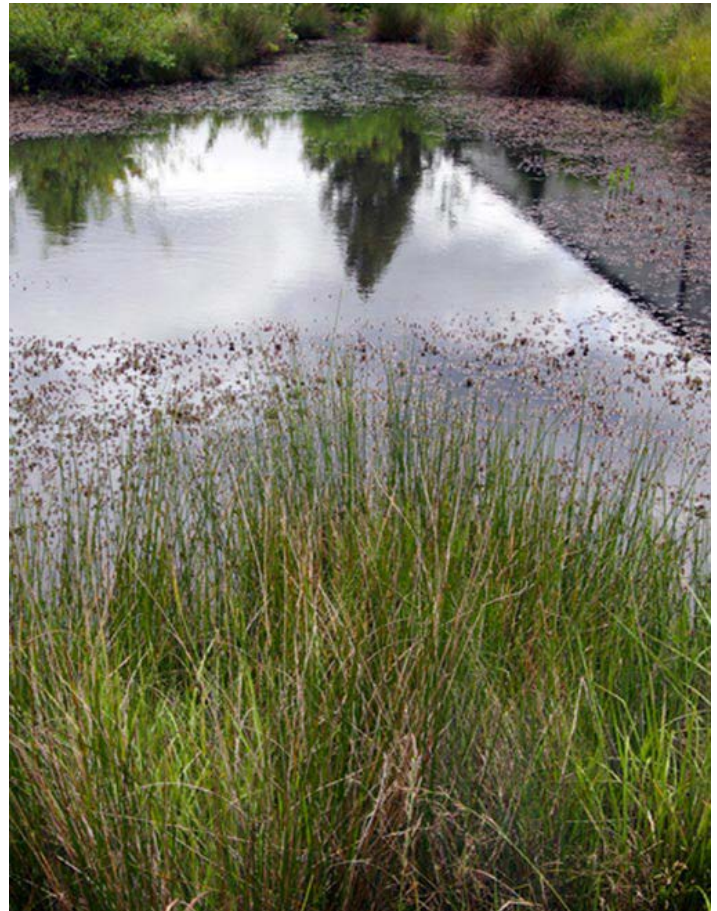
The completed project offers both environmental and economic benefits including:

- **Flood resiliency** - Stormwater is delayed in facilities, allowing stormwater-receiving streams to accept the runoff over a longer period of time which reduces erosion and cut banks.
- **Urban pollutant reduction** - Heavy metals, pesticides, petrochemicals, sediment, nutrients and excessive heat can all be efficiently managed in rain gardens.
- **Wildlife & pollinator habitat** - Rain Gardens planted with at least 70% native plants provide food and shelter otherwise not available to pollinator and other native species in urban areas.
- **Improved in-stream water quality** - By slowing, cooling and cleaning stormwater in rain gardens, stormwater-receiving streams have improved fish, amphibian, and macro-invertebrate habitat.
- **Distinctive signage** - Highlighting the sight as an example of a Trout Friendly Landscape educates passers-by, visitors and employees that all landscapes have an important roll to play in healthy ecosystems!

## PROJECT DATA

### Mountain Rose Herbs Rain Garden

- Size: 500 s.f.
- Treatment area: 11,000 s.f. of impervious surface
- Cost: \$8,205
- Funding Partners:
  - Meyer Memorial Trust
  - City of Eugene
  - Environmental Protection Agency



*Mountain Rose Herbs is the first local business to earn certification! Long Tom Watershed Council is the South Willamette Valley Salmon Safe Urban Campus Representative, helping business understand and meet the criteria. The above photo shows the on-site stormwater retention and habitat pond.*