

## Public Meeting Invitation

### Improving Habitat for Native Amphibians on Working Lands

Tues, Jan 26, 6 - 7:30 p.m.

Fern Ridge Library, 88026 Territorial Hwy, Veneta



From left to right: northern red-legged frog (photo ODFW); rough-skinned newt (photo: Bob Swingle, ODFW); Pacific tree frog (photo: Kelly McAllister, ODFW)

### Topics

- **Winter Green Farm owner Jack Gray** will talk about the project to improve wetland habitat for native species
- **Biologist Chris Pearl** will present his research on how native amphibians responded to the Winter Green Farm project.
- Ways property owners with wetlands or existing ponds can improve habitat for amphibians on their land
- Learn how to identify the most common local amphibian species

Hosted by Mike Brinkley,  
*LTWC board member*

Refreshments provided

Free, and open to all

For more info, Rob: 338-7055  
or [operations@longtom.org](mailto:operations@longtom.org)

*More on next page*

The Long Tom Watershed Council serves to improve water quality and watershed condition in the Long Tom River basin and surrounding drainages through education and collaboration among all interests, using the collective wisdom and voluntary action of our community members.

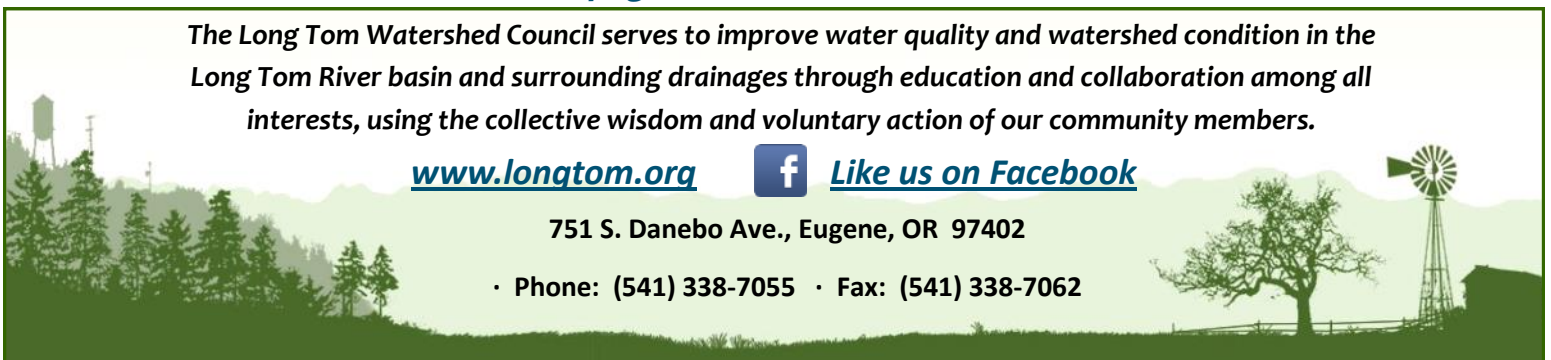
[www.longtom.org](http://www.longtom.org)



[Like us on Facebook](#)

751 S. Danebo Ave., Eugene, OR 97402

• Phone: (541) 338-7055 • Fax: (541) 338-7062



# Improving Habitat for Native Amphibians on Working Lands

**Tuesday, January 26, 6:00 - 7:30 p.m.**

**Fern Ridge Library** (*directions on back page*)

Amphibians spend part of their life cycles on land and in water, and because they're invested in both worlds, they can be particularly sensitive to poor water quality or the impacts of invasive species. However, amphibians are a very important part of the food chain, and they can also be beneficial by controlling agricultural pests.

In 2008, owner Jack Gray of Winter Green Farm, a 180-acre organic farm on Poodle Creek near Noti, entered into a project with LTWC to improve water quality and wildlife habitat. This multi-faceted project included enhancement of a one-acre pond and surrounding wetlands, provided fish passage on a seasonal tributary to Poodle Creek, and improved oak savanna. At the pond and adjacent wetlands, basking logs were installed for western pond turtles, and invasive weeds were replaced with native vegetation. Amphibian breeding habitat was created at the edges of the pond and wetland areas to provide protected areas from invasive predators like bullfrogs. After the project, wildlife biologist Chris Pearl spent three years monitoring the abundance and breeding success of amphibians at Winter Green Farm, and found that the project had a beneficial impact on the native amphibians like northern red-legged frogs and Pacific chorus frogs.

Join us at January's public meeting to learn more about Chris' research and these diverse and fascinating animals, what property owners like Jack Gray are doing to create amphibian-friendly habitat on their land, and how to identify some of the most common amphibian species and their eggs. We hope to see you on January 26<sup>th</sup>!



Above: This pond at Winter Green Farm was enhanced for native amphibians, waterfowl, and reptiles like this rare western pond turtle. Right: This rough-skinned newt was found in Rattlesnake Creek by a volunteer during our Cutthroat Migration Study.

---

## Growth Drives Shared Leadership at LTWC

LTWC has seen its positive impacts continue to grow in the watershed thanks to the involvement and support of many donors, project landowners, partners and community members. In recent years, we've developed programs around pesticide monitoring, urban water quality and habitat improvement. We've provided technical services to urban businesses and Latino landscapers, and expanded our service area to the Willamette River. LTWC has grown such that responsibilities of the Office of the Executive Director are now broad enough that we will share them among multiple director positions. Clinton Begley, our Development & Communications Director, and Rob Hoshaw, our Operations Director, will now be contributing their talents to the leadership of LTWC. This allows Dana Dedrick, our Executive Director, to work part-time and focus more on her family. This period of growth is an exciting time for LTWC, and the shared leadership will bring more resilience for our long term success while remaining consistent in how we approach our mission, vision, and focus on assisting people to take action in improving local habitat and water quality.

## Exciting Opportunity to Help the Long Tom Watershed!

This year, the LTWC will be launching a spring fundraising campaign to support our growing impacts in the watershed! As we plan for the coming campaign, we'll be needing several enthusiastic and motivated volunteers who are passionate about telling the story of the Long Tom and inspiring others to support the council. The campaign will last 6 weeks from February through March, and volunteers should be willing to volunteer about 2 hours per week for the duration of the campaign. No prior asking experience is necessary and we'll provide plenty of guidance and coaching to ensure success! The only qualifications are: to be passionate about the mission of the council; be an existing, or willing to become, council donors yourselves; be able to attend the volunteer orientation and campaign kick-off meeting; and be comfortable with asking donor-peers in the community to support the amazing work that we do throughout the watershed. We anticipate having a fun and enthusiastic crew on hand with celebrations of success along the way! If you're interested in participating in this fresh and important campaign to support the council's work, please contact Development Director Clinton Begley at [clinton@longtom.org](mailto:clinton@longtom.org) or by calling at 541-654-8965. We look forward to connecting your enthusiasm and support for the watershed with others in the community to share that passion too!

## Recent Gifts - Thank You for Your Support!

**Business League:** Bauman Tree Farm, LLC, Cabela's, Eugene Yoga Company, Hop Valley Brewing Co., Huntons' Family Farm, InShape Athletic Club, Tamarack Aquatic Center,

**Individual & Business Donors:** Peder Allison, Ed Alverson, Rolf Anderson, Samantha Bartling, Vicki Blackman, Dick & CJ Booth, Margaret & Lee Boutell, Mike Brinkley, Ted & Lindy Brown, Barbara Coon, Kurt Corey, John & Marilyn Daniel, Dana & Jason Dedrick—in honor of our children, Wallace & Roberta Detering, Alan & Sue Dickman, Ellie Dumdi, Tina Fenley, Elliot & Kathryn Grey, Cliff & Rod Herbert, Debra Hines & Skip Hansen, Sue Kacsos, Kurt & Mary Koehler, Laughing Stock Farm, Liz Lawrence, Gary Lech, Pat McDowell, Keli Osborn, Betsy Parry, Jim & Christine Pendergrass, Hugh & Sue Prichard, Mike & Bonnie Quigley, Mark Rauch, Deborah Saunders Evans, Steve Sertic, Kevin Shanley, Stillwater Farm, Peter Thurston, Transition Management, Inc., David & Suzanne Turner, Unitarian Universalist Church, David Wali & Jabrila Via, Carol May and David Watkins, Mary Ellen West, Ariana White - in memory of Athena Slavin, Denis White, Jamie Whitney, Amanda Wilson, Malcolm Wilson & Mary Jaeger, Charles Zennache, In honor of Leah Davis

**Taste the Watershed Events:** Oakshire Brewing Co.



## Simple Ways to Give to LTWC:

1. **Credit card:** visit [www.longtom.org](http://www.longtom.org) and click on "[Support Us](#)" to use our simple web form.
2. **Mail a check:** LTWC, 751 S. Danebo Ave., Eugene, OR 97402

Questions? Call Rob: 541-338-7055



## LTWC Partners & Work Recognized

Congratulations to **Giustina Land & Timber** and **Hull-Oakes Lumber** for winning the Oregon Department of Forestry Operator of the Year award for their work with the Long Tom Watershed Council on two critical fish passage projects! It's because of the voluntary cooperation of our partners in the watershed that these important projects can happen on private lands for the benefit of native species watershed-wide. Congratulations to both project landowners on the much deserved recognition of this important work that would not have happened without their cooperation and trust in LTWC.

LTWC fish biologist Jed Kaul received the Public Lands Foundation Award, which recognizes work to advance and sustain community-based stewardship. Jed was nominated by the Eugene District Bureau of Land Management (BLM) for spearheading LTWC's work on fish habitat enhancement projects in priority areas of the watershed as well as the recent success of a multi-landowner and multi-year project in the Coyote Creek sub-basin. This recognition is only possible with the efforts of watershed neighbors all working together in partnership! Congrats, Jed!



Top: Garrett Yarbrough of Giustina Land & Timber accepts an award at last year's Annual Celebration. Both Giustina & Hull-Oakes received LTWC's 2015 Project Landowner of the Year Award. Bottom: Pictured with Eugene District BLM staff, LTWC fish biologist Jed Kaul (center) accepts the Public Lands Foundation award.

## 2016 Calendar of Events

### Public Meetings & Tours

These public learning opportunities are free and open to all. Topics & dates may change, so be sure to check future newsletters or [www.longtom.org](http://www.longtom.org).

- **Tues, Jan. 26**, 6 p.m. Fern Ridge Community Library, *Improving Habitat for Native Amphibians*
- **Tues, March 29**, 6 p.m. Topic and Location TBD
- **Tues, April 26**, 6 p.m. Tour of project to improve fish passage on Coyote Creek tributary
- **Saturday, June 4**, 9:30 a.m., *"Howdy Neighbor Tour,"* in partnership with Bauman Tree Farm.
- **Tues, June 28**, 6 p.m. Tour of project to improve oak and prairie habitat at Wild Iris Ridge in south Eugene
- **October weeknight - 19th Annual Meeting & Celebration.** Date and Location TBD
- **Tues, Nov 29**, 6 p.m. Topic and Location TBD

### "Taste the Watershed!"

Support the work of LTWC by purchasing food or beverages at these local breweries and restaurants on the day posted below. A portion of sales go towards LTWC. Stay posted, as we'll likely add to this list!

- **Sat, Jan. 30.** Sam Bonds Brewing, 540 8th Ave., Eugene
- **Sun, Feb. 20.** Barn Light - Downtown, 924 Willamette St., Eugene
- **Sun, March 20.** Cornucopia Bar & Burgers, 207 E 5th Ave, Eugene
- **Mon, April 18.** Fisherman's Market, 830 W 7th Ave, Eugene
- **Tues, June 14.** Hop Valley Brewing's Tasting Room, 990 W. 1st Ave., Eugene

For more information, call 541-338-7055 or email [operations@longtom.org](mailto:operations@longtom.org)

## LTWC Developing a Lower Long Tom Enhancement Plan

LTWC has received grant funding from the Oregon Watershed Enhancement Board to begin developing a plan for the improvement of the habitat and hydrology of the lower Long Tom River from the Fern Ridge Dam downstream to Monroe. The goal of the project is to develop a plan that will increase the river's capacity, improve habitat conditions for native fish and wildlife, and improve fish migration while considering the needs and perspectives of local landowners and the community. We will be forming a small committee to participate in the development of a sound river enhancement plan, and we'll be seeking participation from local agricultural landowners and scientists. Key partners and supporters on this project include the U.S. Army Corps of Engineers, McKenzie River Trust, a private donor and community leaders.



*This drop structure at Monroe is one of three such structures on the lower Long Tom River between Monroe and Ferguson Creek that limit the upstream migration of native fish during part or all of the year.*

The Long Tom Watershed Council, a local nonprofit, counts on participation from many people and organizations. The local office of the Bureau of Land Management (BLM) donates postage for our mailings. They use the following disclaimer, standard procedure for all BLM partnerships:  
**BLM Disclaimer:** "The views and conclusions contained in this document are those of the authors and should not be interpreted as representing the opinions or policies of the U.S. Government. Mention of trade names or commercial products does not constitute their endorsement by the U.S. Government."  
 The Long Tom Watershed Council is still a local nonprofit (since 1998) with no government authority. We partner with local people, businesses, and agencies in the interest of finding local solutions and bringing grant funding from private and public sources to do restoration, education, and monitoring work in the Long Tom River basin. We're thankful for the donation of postage expenses!

## LTWC Board of Directors

### Lower Long Tom

Steve Horning, *Vice-Chair*  
 Jim Pendergrass, *Past Chair*  
 John Reerslev

### Upper Long Tom

Cary Hart  
 Lindsay Reaves  
 Charles Ruff, *Chair*

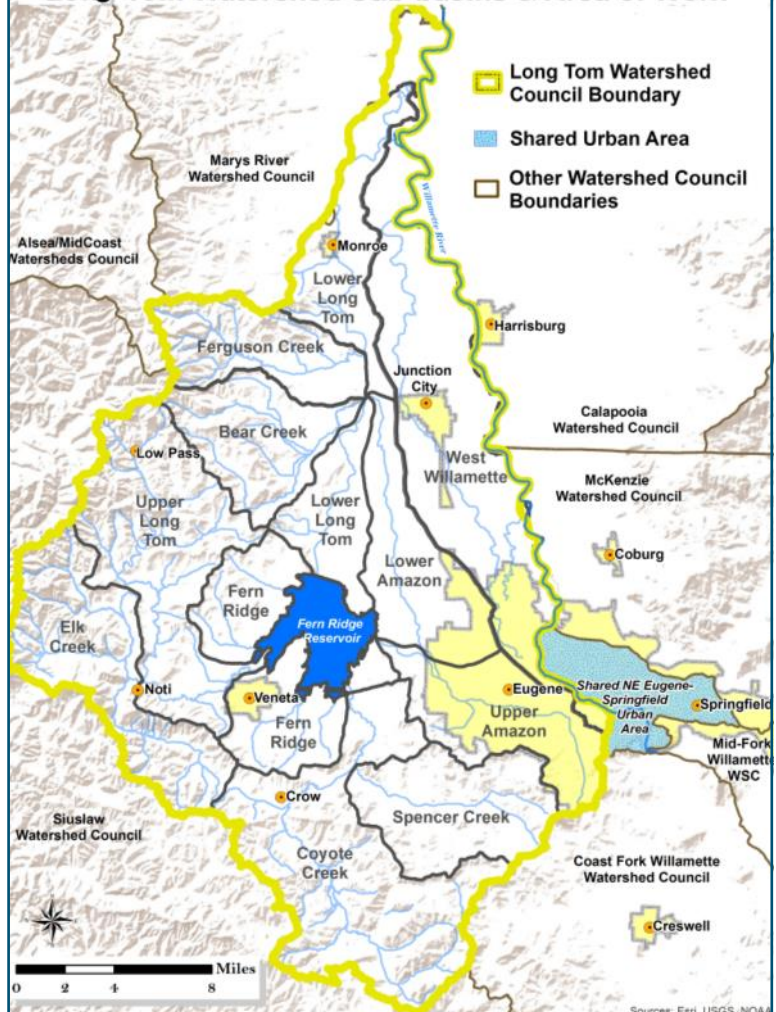
### At Large

Mike Brinkley, *Treasurer*  
 Deborah Saunders Evans,  
*Vice-Chair*  
 David Turner, *Vice-Chair*

### Amazon

Alan Dickman  
 David Ponder  
 Therese Walch, *Secretary*

## Long Tom Watershed Sub-basins & Area of Work



## Council Staff Contacts

**Dana Dedrick**, *Watershed Coordinator/E.D.*: 541-338-7055  
**Rob Hoshaw**, *Operations Director*: 338-7055  
**Clinton Begley**, *Development & Communications*: 654-8965  
**Jed Kaul**, *Fish Biologist*: 338-7058  
**Katie Mackendrick**, *Ecologist*: 338-7033  
**Sarah Whitney**, *Urban Habitat & Stormwater*: 654-8965  
**Kathryn Rifenburg**, *Outreach & Education*: 654-8965  
**Heidi Heisler**, *Fiscal Manager*: 338-7042  
**Christer LaBrecque**, *Stewardship Technician*: 338-7045



road, just past the fire department.  
Bi-Mart). The library is on the west side of the  
intersection of Territorial Hwy (stoplight with  
Directions: From Hwy 126, turn south at the  
88026 Territorial Hwy, Veneta

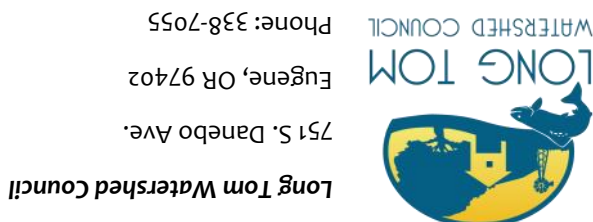
## **Fern Ridge Library**

**Tues, Jan. 26, 6 - 7:30 p.m.**

# **"Improving Habitat for Native Amphibians on Working Lands"**

**All welcome!**

## **Public Meeting Invitation**



## **Help Stop the Spread of Invasive False Brome**

False brome is an invasive perennial grass with broad, flat, bright green leaves. One of the best ways to distinguish it from similar grasses is by the fine hairs on the lower stem. The lower part of the leaf, called the sheath, freely pulls away from the grass stem. Younger plants look somewhat like a spider while older plants form thicker mats. It can thrive both in forest understories and in oak savanna and prairie habitats.

Please help stop the spread of false brome by cleaning shoes, clothing, and vehicles that can carry seeds. If you believe you have found false brome, please report it at [www.oregoninvasiveshotline.org](http://www.oregoninvasiveshotline.org)

Visit [www.longtom.org/stewardship-resources/invasive-species](http://www.longtom.org/stewardship-resources/invasive-species) or [westerninvasives.network.org](http://westerninvasives.network.org) for more info about false brome & other invaders.



*The younger false brome plants resemble a spider with spreading bunches of leaves are easier to see in winter.*

*Photo: Glenn Miller*



*Notice the fine hairs on grass stem and edge of leaf.*

*Photo: Bruce Newhouse*