



LONG TOM WATERSHED COUNCIL

March 2018

Action
Through
Understanding

Public Meeting Invitation

Amazon Creek: Learning about its history and envisioning the future

Northwest Community Credit Union, Tuesday, March 20, 6 - 8 p.m.



Above left: Voluntary Trout Friendly Landscape Project at Essex General Construction;
Above right: Amazon Creek flowing through the West Eugene Wetlands.

Inside this Issue

- March 20th Public Meeting Info 2
- City of Eugene goes Salmon-Safe! 3
- Connecting urban work to Monroe..4
- Thank you, Christine Ransom!..... 5
- \$100,000 for the watershed.....6
- Donor Appreciation.....6
- Winter Project Work.....7
- Tree Planting Support8
- Map; Board & Staff Contacts.....9
- Upcoming Events.....9
- Welcome, Sarah Pollock!..... 10

Meeting Topics:

- Historical and functional changes to Amazon Creek over time
- How the City of Eugene manages Amazon Creek for multiple goals
- Current and planned efforts by both the City and LTWC to improve water quality and habitat, including a new collaborative grant to implement a voluntary shade incentive program
- Recent Urban Waters & Wildlife Program accomplishments, and upcoming work on the horizon

LTWC Public Meetings are free and open to everyone

Light refreshments are provided

LTWC Listserv:

Interested in receiving our newsletter electronically or joining our listserv? Email Rob, operations@longtom.org

The Long Tom Watershed Council serves to improve water quality and watershed condition in the Long Tom River basin and surrounding drainages through education and collaboration among all interests, using the collective wisdom and voluntary action of our community members.

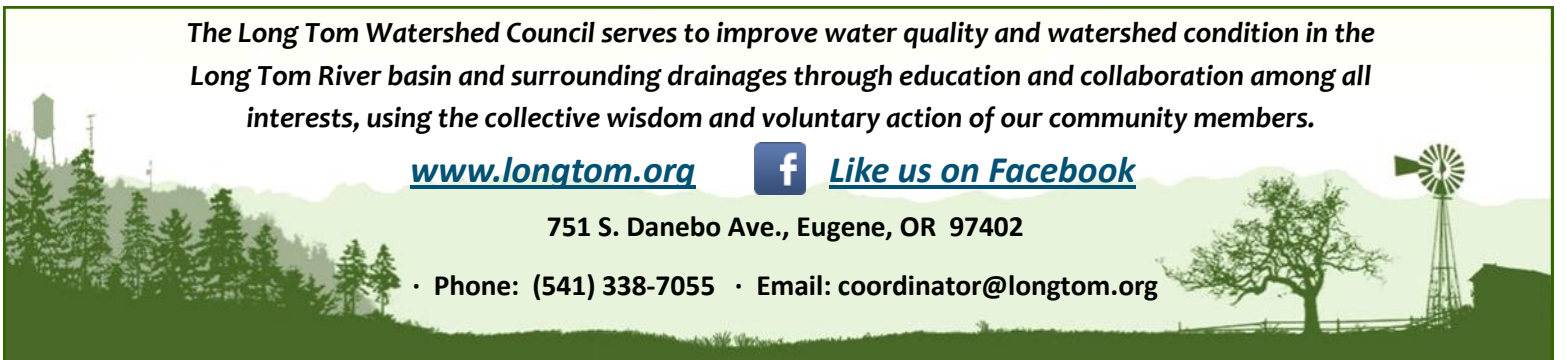
www.longtom.org



[Like us on Facebook](#)

751 S. Danebo Ave., Eugene, OR 97402

• Phone: (541) 338-7055 • Email: coordinator@longtom.org



Amazon Creek: Learning about its history and envisioning the future

March 20th Public Meeting

Amazon Creek is Eugene's second largest waterway, after the Willamette River. In addition to the Amazon mainstem, which flows into the Long Tom River west of Junction City, the Amazon watershed includes smaller tributary streams like Willow Creek and a series of channels in the urban area. This network of channels is an inextricable part of Eugene life. The Amazon watershed provides important urban habitat, plays a key role in the broader water quality of the Long Tom, and is part of the aesthetics and sense of place for our community.



In January, several local city, agency, and private firm representatives took a tour of LTWC's Trout Friendly Landscape projects (Essex General Construction project pictured above). This tour kicked off a project that will result in a prioritization process for future TFL projects on commercial and industrial properties in the Eugene metro area.

For the past eight years, LTWC has been leading a collaborative effort to improve urban water quality and habitat through the voluntary participation of businesses and our community members. This work began with collecting data on pesticides in Amazon Creek, and sharing that data with partners and stakeholders, as part of the Amazon Pesticide Stewardship Partnership, a collaboration with SureCrop Farm Service, the City of Eugene, Meyer Memorial Trust, the Oregon Department of Environmental Quality, and most recently, the Oregon Department of Agriculture.

In 2014, LTWC expanded its urban work both in geography and the scope of our services to become the "Urban Waters & Wildlife Program," which today offers our urban programming to the entire Eugene-Springfield metro area. The Urban Waters Program is multi-faceted in scope and action, and is continuing to expand in impact as a direct result of the diversity of partners and support it has garnered. As the program has grown, the core tenets of the council's approach have remained the same: 1) collect data that informs our understanding of current conditions and water quality needs, 2) develop relationships with business owners and stakeholders through outreach and education that ultimately leads to voluntary action, 3) provide project assistance to those property owners willing to voluntarily implement stormwater improvement projects.

The work of the Urban Waters & Wildlife Program has already begun positively impacting water quality, but there is still work to be done. The council is poised to continue growing its impacts, along with several important community partners who are supporting us in this work. During our **March 20th public meeting**, join the council and one of those major partners, the City of Eugene, to learn more about

(continued on next page)

Speakers



Jesse Cary-Hobbs - City of Eugene Natural Areas Supervisor



Shelly Miller - City of Eugene Parks & Open Space Ecological Services Manager, and LTWC board president



Sarah Whitney - LTWC's Urban Restoration & Stormwater Specialist

(continued from previous page) the vision for Amazon Creek, the collaborative efforts already underway to improve urban water quality and habitat, and the exciting work planned for the near future. There's been a lot happening lately—we've recently completed our 15th TFL project, and the City of Eugene Parks & Open Space Division received their Salmon-Safe certification! LTWC and the City were also recently awarded a grant by the Department of Environmental Quality to implement a voluntary shade incentive program, so we'll also share the goals and action steps involved with this project.

You'll also hear a brief history how the creek has changed over time, how the City of Eugene manages the creek, and why the Amazon watershed matters to the bigger water quality picture of the Long Tom Watershed.

We hope you'll join us to learn more about work to improve this important urban stream!

Public Meeting: Tuesday, March 20, 6 - 8 p.m., Northwest Community Credit Union's community room, 545 E. 8th Ave., Eugene

Questions? Rob Hoshaw: operations@longtom.org, 541-338-7055

City of Eugene Parks & Open Space goes Salmon-Safe!



In 2017, the City of Eugene Parks & Open Space Division achieved Salmon-Safe certification across the city's 130 parks and natural areas. Here Salmon-Safe's Anna Huttel (right) presents a certification plaque to Eugene Mayer Lucy Vinis (center) alongside LTWC's Sarah Whitney.

LTWC is Salmon-Safe's Southern Willamette Valley Representative and played a key role in helping coordinate this important pledge by the city. Our strong partners at Mountain Rose Herbs became the first Salmon Safe certified business in Eugene in 2014!

At the March 20th public meeting, Shelly Miller will share more about the city's decision to become Salmon-Safe certified and how that is informing future riparian habitat and restoration goals. Congratulations to the City of Eugene Parks & Open Space Division for taking this important step!

To learn more about Salmon Safe, and whether it might be right for your business: www.longtom.org/science-projects/amazoncreek/salmon-safe-certification-assistance/

Support LTWC through Fred Meyer Community Rewards!

You can help LTWC earn donations just by shopping with your Fred Meyer Rewards Card! You'll continue to earn rewards points, fuel points and rebates as you already do. Here's how it works:

1. Sign up by linking your Fred Meyer Rewards Card at www.fredmeyer.com/community-rewards/
2. Search for LTWC by name or enter nonprofit number 85907
3. For more info, visit www.longtom.org/donate/fredmeyerrewards/



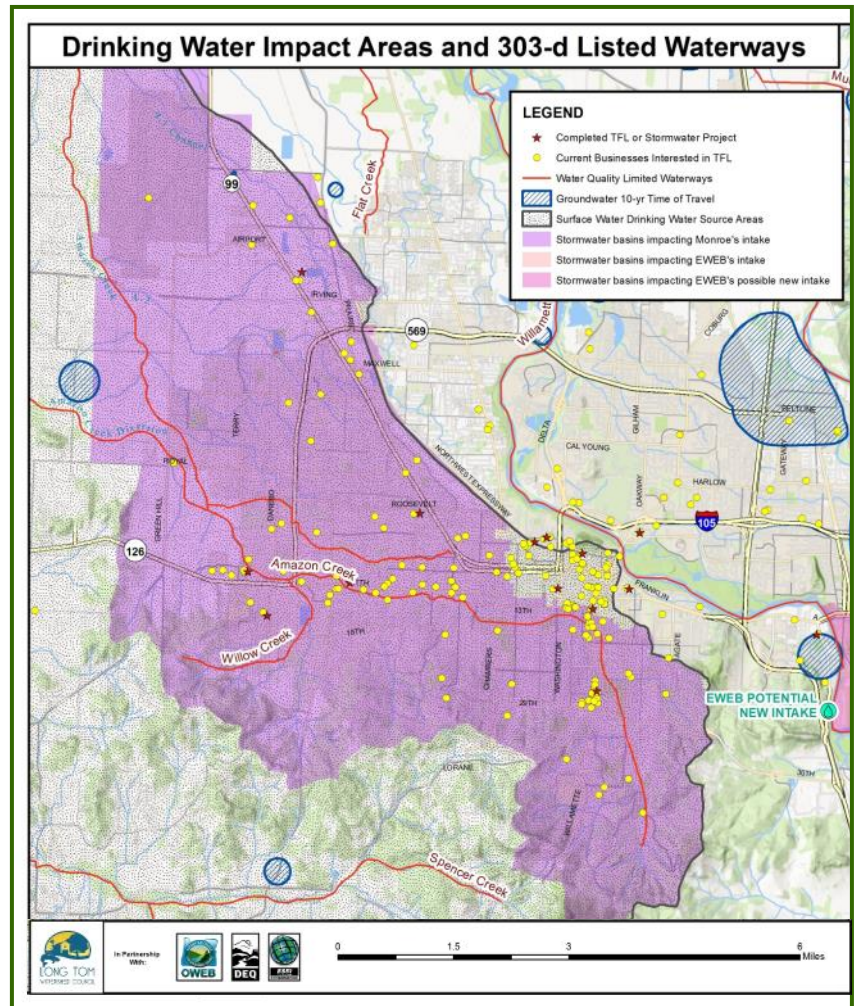
Working Upstream to Improve Monroe's Drinking Water Quality

The benefits of the council's Urban Waters & Wildlife Program extend beyond Amazon Creek and the Eugene-metro area, and improvements to the Amazon watershed also benefit water quality in downstream communities such as Monroe. Throughout our history, the council and the watershed community has recognized the value of an "upstream approach" to improving water quality in the Long Tom River basin—that what happens upstream also affects the downstream end. Monroe area farmer Tony Stroda has illustrated this point well through a story he often tells. While eating dinner beside the Willamette River in Portland, he had a humbling observation as he started thinking about how some of the water he was watching there had previously flowed by his farm along the Long Tom River, and then that water would continue on all the way to the ocean.

When Monroe started sourcing their drinking water from the Long Tom in 2009, LTWC saw an increased need and opportunity to focus efforts on projects that directly impact water quality in the Long Tom and tributaries upstream of Monroe. For the last eight years, LTWC and its partners have been collecting data on pesticides in Amazon Creek as part of the Pesticide Stewardship Partnership. What we've found so far is that urban stormwater is the most significant contributor to pesticides in the Long Tom River. Along with total organic solids, pesticides are the most difficult challenge facing water utilities that draw water from the Long Tom.

While LTWC has worked for over 20 years to help local ranchers develop win-win solutions to limit organic solids inputs to the river, LTWC's Urban Waters & Wildlife Program formed in 2014 to directly address the urban stormwater impacts, including pesticides, to the river's water quality by assisting urban commercial and industrial business owners who are interested in voluntarily improving water quality and stormwater inputs on site. That same year, LTWC launched the "Trout Friendly Landscape Program" (TFL), which provides technical assistance, design, project installation cost offsets, and maintenance guidance for business owners interested in voluntarily implementing voluntary stormwater management facilities like rain gardens and bioswales. These projects help to slow and clean water leaving roofs and parking lots before entering Amazon Creek and onward to the Long Tom River and Monroe's drinking water intake.

Then in 2016, LTWC was awarded a grant from the Oregon Department of Environmental Quality (DEQ) to map drinking water impact areas in the watershed and provide outreach and technical assistance to small communities, including Monroe, to explore stormwater improvement opportunities. We were able to leverage this funding through previously awarded grants from the Oregon Department of Agriculture (ODA) to conduct outreach to the industrial sector, from the Oregon Watershed Enhancement Board (OWEB) to provide outreach and education to



commercial businesses, and via our strong partnership with the City of Eugene—the latter was especially instrumental in helping us to launch the incentive program for TFL projects.

We're delighted by the high interest area urban businesses have for the TFL program, and this has now created an opportunity for LTWC to prioritize future projects according to their potential for positive habitat and water quality impacts downstream. In 2017, LTWC was awarded a grant from OWEB (funded by Oregon Lottery funds) for a project titled "Designing for Downstream," to develop a prioritization tool that will help the council make decisions on where project investments in the Amazon will yield the greatest benefits to downstream water quality. That process is currently underway and includes potential impacts to Monroe's drinking water quality as a significant prioritization criteria (see map). Other factors being considered include the kinds of pollutants present, the scale of project potential, and social factors leading to a successful project.

While the majority of this work is happening many river miles above Monroe, and out of sight of most Monroe residents, LTWC is excited for opportunities that exist for improving water quality in the Long Tom River basin through these voluntary urban habitat improvements upstream. This work is an example of the council's ongoing commitment to improving habitat conditions and water quality in the lower river, and is supported by over 20 years of work throughout the watershed working toward a healthier Long Tom Watershed for people and wildlife alike.

Timeline: LTWC's Work to Improve Monroe's Drinking Water Quality

1998 - Council begins working with local landowners on collaborative watershed solutions. Focus was primarily on rural projects with agricultural and forestry partners.

2009 - Monroe drinking water source switches to Long Tom River.

2011 - LTWC begins Pesticide Stewardship Monitoring Program and identifies urban stormwater as largest factor affecting Long Tom water quality.

2014 - LTWC launches Urban Waters & Wildlife Program to address urban impacts to the river.

2016 - LTWC launches project to map drinking water impact areas and focus on projects to improve drinking water quality.

2017 - LTWC begins large scale prioritization effort to help select projects based on positive impact to Monroe's drinking water.

Recent Gifts - Thank You for Your Support!

20th Anniversary Campaign: Merle & Kathy Allen, Peder Allison, Rolf Anderson, Paul Atkinson, Patricia & William Baron, David Barta, Bauman Tree Farm LLC, Sharon & Jim Blick, Peg Boulay & Bruce Newhouse, Ted & Lindy Brown - In honor of Churchill High School, Erik Burke, Martin & Ellen Burke—In honor of Andy Burke & Ingrid Kessler, Steve Cole, Barbara Combs, Paula & Denny Conn, Dana & Jason Dedrick, Alan & Sue Dickman, John & Donna Dillard, Tina Fenley, Kelli & Tye Fountain, Rebecca Hale, Roger & Karen Hamilton, Cliff & Kari Herbert, Lauri Holts, Horton Road Organics, The Iris Charitable Fund, Fraser MacDonald, Pepper & Lee March, Sara Kaul & Robert Murphy, The Kiva, Jess Lambright, Lane Forest Products, Liz Lawrence, Lochmead Farms, Charlie Loeb, Whitey Lueck, Margaret MacDonald & Thomas Lively, The James D. & Laura C. Marshall Charitable Fund, Ray Morse & Phyllis Helland, Todd Mullen, Mark Murphy, Keli Osborn, Ephraim Payne, Christopher Pearl, Redtail Fund of the Oregon Community Foundation, Pollock-Yates Family, Paul Reed, Reerslev Farms Inc., Rexius, Nan Rich, Anami Ridge, Kevin & Evelyn Shanley, Stillwater Farm, Andy & Maryrae Thomson, Peter Thurston, David & Suzanne Turner, Jabrila & David Via, Therese Walch, Kate Widmer, Anne Wood, Charles Zennache, Anonymous (5)

Faith Community Fund Gifts: Allan Gubrud, Benjamin Halpern - In honor of Betsy Halpern, Betsy Halpern, Rosalie Hammond, Debra McGee & Patricia Hine - In honor of First United Methodist Church, Len & Phyllis Hockley, Katherine & Chuck Hunt, Jan Becker & Penny Palmer, Dorothy & Neff Powell, Tina Tarnelli, Elizabeth Vollmer-Buhl, Richard & Ty Zeller, Anonymous (1)

Long Tom Businesses Step Up to Stretch our Goal!

After the community exceeded our \$60,000 goal for our 20th Anniversary Campaign by a whopping \$20,000, the Long Tom business community recognized how close we were to an even bigger milestone, representing the opportunity for significant impact in the watershed. To date, numerous local businesses have given or pledged to bring our campaign total to just over \$96,000! Those significant gifts put us just **\$4,000 away from raising \$100,000 for the watershed!**

Would your business like to help us reach our \$100,000 stretch goal? Until we hit this stretch goal, all businesses who give will be enrolled in our Business League regardless of gift size! You can learn more about the perks of LTWC's Business League at our website: longtom.org/businessleague or contact Clinton directly at coordinator@longtom.org

The following Business League members care about land, water and people of the Long Tom, and are investing a portion of their earnings in high-quality habitat and water quality enhancement for future generations: Armadillo Roofing, Bauman Tree Farm, Bradshaw Vineyards, Glory Bee, Horton Road Organics, Lane Forest Products, Laughing Stock Farm, Living Earth Farm, Mountain Rose Herbs, Organically Grown, Pacific Ag. Inc., Reerslev Farms, Rexius, Seneca Family of Companies, Spencer Creek Growers Market, Stillwater Farm, Stroda Brothers Farms, The Kiva Grocers-Booksellers, Transition Management, Inc., Trask Design & Construction, Weyerhaeuser Company Aalsea Forest Area, and WildCraft Cider Works

Thank you to all of these business partners who have given to this incredible campaign, and to all of our individual donors throughout the watershed!

What are we doing with your gifts? Sign up for our email newsletter or check in on Facebook every Friday for our **#LearnYourLongTom** update to see how investments in your watershed are already being put to work and achieving impact in the watershed right now!



Thank you, Christine Ransom!

The council would like to bid a fond farewell to Christine Ransom, who has been our volunteer Landscape Architecture intern for the last seven months. As a proficient user of the landscape architecture software AutoCAD, she worked under LTWC's Sarah Whitney to create numerous designs for urban stormwater projects at local businesses. As a recent graduate of the University of Oregon's Landscape Architecture Program, Christine was able to gain valuable experience as a designer and in understanding stormwater management that she wants to carry forward into her career. Best wishes, Christine! We've enjoyed getting to know you, and we're so appreciative of your tremendous talents, and all the work that you've done for the Urban Waters & Wildlife Program and LTWC!



Project Spotlights—Winter Work!

South Marsh Prairie Restoration

It's been a busy winter season at South Marsh! Through grants with the Oregon Watershed Enhancement Board and Ducks Unlimited (via the North American Wetlands Conservation Act grant program), we seeded 15 acres of native grasses across a mosaic of wet and upland prairie, improved oak woodland habitat across 15 acres by hand-thinning invasive or encroaching vegetation, and are staking willows and dogwoods in appropriate locations across a 30-acre area currently dominated by reed canarygrass, with more willow staking and bare root tree planting still to come. Our partners at the U.S. Army Corps of Engineers, who own and manage the property, have been busy putting out native plugs and forb seed, including plots of endangered Willamette Daisy.

This work at South Marsh has been underway since 2012 and has focused on invasive species removal and native plant establishment in this 325-acre site that is part of the Fern Ridge Wildlife Area. According to the Oregon Department of Fish and Wildlife, 344 species of wildlife have been documented here, including 252 species of birds, 49 species of mammals, 18 species of fish and 25 species of amphibians and reptiles!



Mainstem Willamette Projects at Snag Boat Bend & Sam Daws Landing

Our work on the Willamette Mainstem continues! Since the council's service area expansion in 2014 to include the mainstem of the Willamette river, LTWC has been working with the U.S. Fish and Wildlife Service on two of their properties along the Willamette: Snag Boat Bend and Sam Daws Landing. This work is part of a Willamette River Anchor Habitats Focused Investment Partnership (FIP) of which the council is a part. The Anchor Habitats "FIP," is comprised of a group of partners working on the mainstem of the river to do large scale habitat enhancement on floodplain forests and side channels to the Willamette river. This model of propelling habitat enhancement brings together multiple funders including the Oregon Watershed Enhancement Board, Meyer Memorial Trust, and Bonneville Environmental Foundation to secure six years of dedicated funding to large scale habitat enhancement in a highly coordinated way with multiple entities and partners like watershed councils and land trusts up and down the Willamette river.



At LTWC's two focus sites, the council has already coordinated the re-connection of the Willamette mainstem to side channel and floodplain habitat through the removal of constructed features like berms, and the creation of swales that get water (and fish!) interacting with the floodplain during the right time of year. We have also replaced undersized culverts and coordinated the planting of hundreds of thousands of trees and shrubs at these two sites!

In February, with the help of a strong crew from R. Franco Restoration, the council planted 72,000 bare root trees and shrubs! *(photo at right)* We are also currently lowering the elevation of a low-water crossing to reconnect the high flow floodplain channel to the land. *(photo on previous page)*



This is an exciting large scale habitat enhancement effort that the council can be a part of because of your gifts! Our involvement in this Focused Investment Partnership and large scale habitat work was seeded by your private donations to enable us to participate in the lengthy initial planning process.

Snag Boat Bend is located just off Peoria Road and is open to the public! It's a great place to observe a variety of birds this time of year and see the main river interacting with this complex and rich habitat!

South Marsh and the Willamette Mainstem projects are but a few of the sites we've been working on this winter. The activities at all of our projects are leveraging your investment in your watershed. Without the support of the watershed community, the council could not secure these grant funds for this important work. Thank you!
[#LearnYourLongTom](#)

One Tree Planted and Arbor Day Foundation Support Willamette Tree Planting Work!

It's planting season, and we're incredibly grateful to two organizations for their support in helping to fund these efforts! The [Arbor Day Foundation](#) helped LTWC and the Willamette River Initiative plant 50,000 trees throughout the Willamette River Basin this winter! This incredible investment will continue to provide critical habitat at some of our Willamette River anchor sites for years to come.

Additionally, [One Tree Planted](#) is sponsoring 11,800 trees in the Long Tom Watershed, including 1,800 oaks, that will go in the ground at three different LTWC projects!

On behalf of the council, our landowner partners, and Long Tom's wildlife, fish and people we thank you!



Thank you, Alan, and welcome, Pat!

LTWC would like to welcome Patricia McDowell as our newest At-Large board member! Dr. McDowell is a professor at the University of Oregon geography department, and has been on LTWC's technical team for many years. Pat is filling the seat of outgoing board member, Alan Dickman, professor at the UO biology and environmental studies departments. The council is grateful to Alan for his years of valuable board service, and for continuing a few extra months until we could fill his seat with Pat's capable hands!



Patricia McDowell will be presented for election, along with the full slate of board candidates, for a full term of board service at the October Annual Celebration.

Upcoming Watershed Events

Next LTWC Public Meeting

LTWC's Cutthroat Trout Migration Study—looking back and initial results! **Tuesday, April 24, 6 - 8 p.m.** Long Tom Grange Hall, 25823 Ferguson Rd, Junction City

Tour a Working Forest!

Our friends at Forests Today & Forever are hosting a program with OSU Extension called "Growing Healthy and Diverse Forests: A "walking tour" that's free and open to the public! Learn about the dynamic nature of how forests grow in western Oregon. The tour will walk through different ages of trees to discuss the forest cycle and what keeps trees healthy. **Sat., March 17th** You can contact coordinator@foreststodayandforever.org for more information and to register.

The Long Tom Watershed Council, a local nonprofit, counts on participation from many people and organizations. The local office of the Bureau of Land Management (BLM) donates postage for our mailings. They use the following disclaimer, standard procedure for all BLM partnerships:

BLM Disclaimer: "The views and conclusions contained in this document are those of the authors and should not be interpreted as representing the opinions or policies of the U.S. Government. Mention of trade names or commercial products does not constitute their endorsement by the U.S. Government."

The Long Tom Watershed Council is still a local nonprofit (since 1998) with no government authority. We partner with local people, businesses, and agencies in the interest of finding local solutions and bringing grant funding from private and public sources to do restoration, education, and monitoring work in the Long Tom River basin. We're thankful for the donation of postage expenses!

LTWC Board of Directors

Lower Long Tom

Steve Horning
David Turner

At Large

Ginnie Grilley, *Vice-Chair*
Darian Lightfoot
Pat McDowell
Jonathan Powell, *Treasurer*

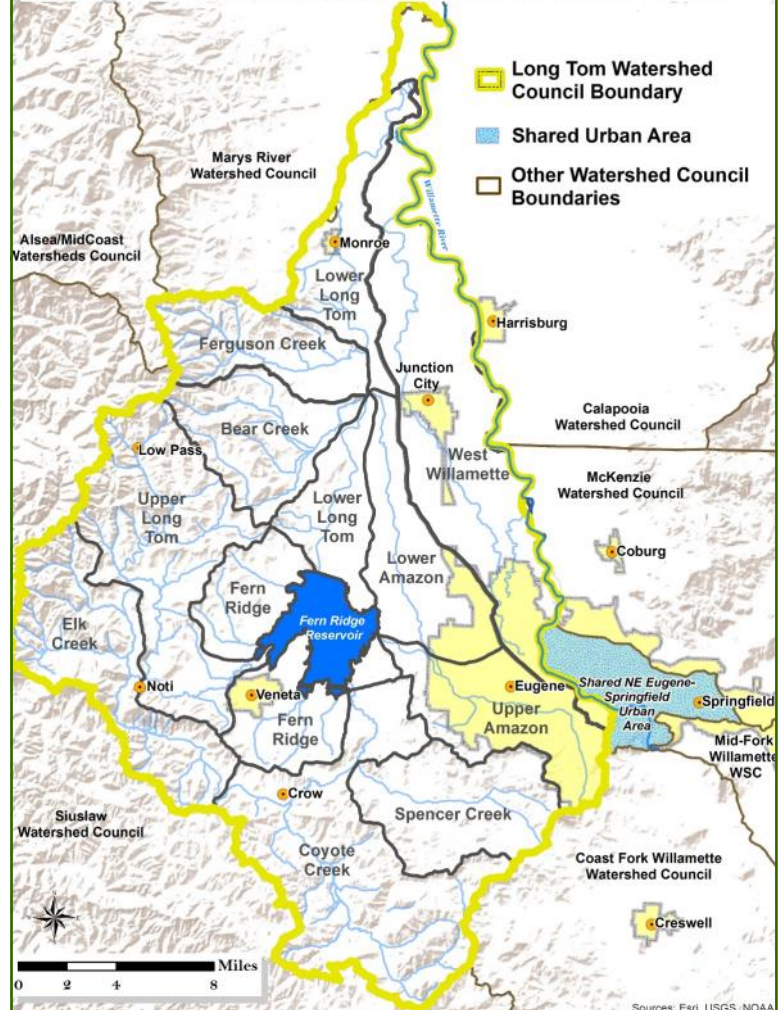
Upper Long Tom

Charles Ruff, *Past Chair*
Jabrila Via

Amazon

Shelly Miller, *Chair*
Dave Thomas, *Secretary*

Long Tom Watershed Sub-basins & Area of Work



Council Staff Contacts

Clinton Begley, Watershed Coordinator/ED: 541-654-8965

Rob Hoshaw, Operations Director: 338-7055

Dana Dedrick, Special Projects Lead: 654-8965

Jed Kaul, Fish Biologist: 338-7058

Katie MacKendrick, Ecologist: 338-7033

Sarah Whitney, Urban Habitat & Stormwater: 654-8965

Amanda Reinholtz, Habitat & Water Quality Spc: 338-7060

Heidi Heisler, Fiscal Manager: 338-7042

Sarah Pollock, Administrative Assistant: 338-7055

Welcome to the team, Sarah Pollock!

LTWC and our partners at McKenzie River Trust (MRT) are both delighted to welcome a new addition! Sarah Pollock has joined our two organizations in an exciting new roll as shared, full-time Administrative Assistant!

LTWC and MRT already share a long history of common goals and collaboration through landowner outreach, habitat enhancement, community engagement, conservation planning, and regional stewardship. In addition to helping each organization's operations grow and move smoothly, Sarah's position will also serve as a bridge between the two organizations as we continue to grow our partnership and collaborative opportunities!

Sarah holds a B.A. in Global Environmental Studies from Clark University in Massachusetts and brings her years of experience as an Administrative Assistant and Program Coordinator for multiple nonprofits and businesses. Growing up hiking and backpacking with her family in Colorado, Sarah developed an understanding and appreciation for the natural environment. She enjoys walking, snowshoeing, and adventuring in all that Oregon has to offer. If you hear Sarah on the phone, or meet her at any of the council's or trust's events, we hope you'll welcome her to the watershed!



Long Tom Watershed Council

751 S. Danebo Ave.

Eugene, OR 97402

Phone: 338-7055

e-mail: coordinator@longtom.org

www.longtom.org

March 20th Public Meeting, 6-8 p.m.

Northwest Community Credit Union

545 E. 8th Ave., Eugene

