



LONG TOM WATERSHED COUNCIL

May/June 2019

Action
Through
Understanding

Project Tour Invitation

Tuesday, May 21, 5:30 - 7:30 p.m.

Urban Stormwater Projects Cycle Tour

Starting at Mountain Rose Herbs' headquarters (4020 Stewart Rd, Eugene)



Photos from left: planting at **Mountain Rose Herbs**; a series of cascading rain gardens at **Essex General Construction** treats 800 square feet of roof runoff; this bioswale at **Gibson Steel Basins** attracted a pair of mallard ducks!

Tour Highlights

- Visit 3 urban stormwater project sites in west Eugene along the Amazon Creek Bike Path
- Learn about LTWC's Urban Waters & Wildlife Program and how businesses can partner with the Council to make their landscapes "trout friendly"
- How vegetated stormwater facilities improve watershed health by filtering toxins and providing habitat

Inside this Issue

May 21 Project Tour Background	2
Urban Project Prioritization Process.....	3
LTWC in the News!	4
Thank You, Donors!	4
Intern Appreciation.....	5
Map; Board & Staff Contacts.....	5
Urban Prioritization (continued)	6

The Long Tom Watershed Council serves to improve water quality and watershed condition in the Long Tom River basin and surrounding drainages through education and collaboration among all interests, using the collective wisdom and voluntary action of our community members.

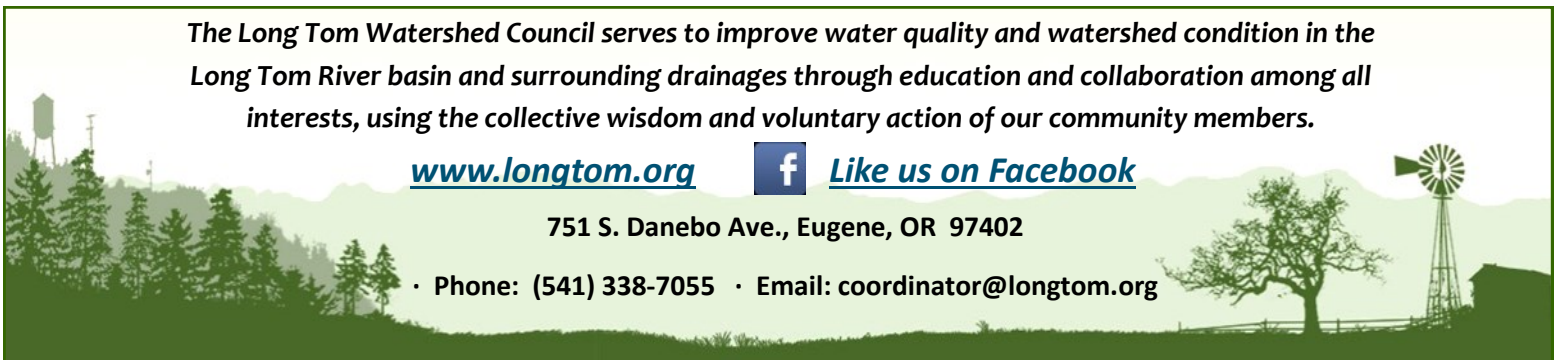
www.longtom.org



[Like us on Facebook](#)

751 S. Danebo Ave., Eugene, OR 97402

• Phone: (541) 338-7055 • Email: coordinator@longtom.org



May 21: Urban Stormwater Projects Cycle Tour

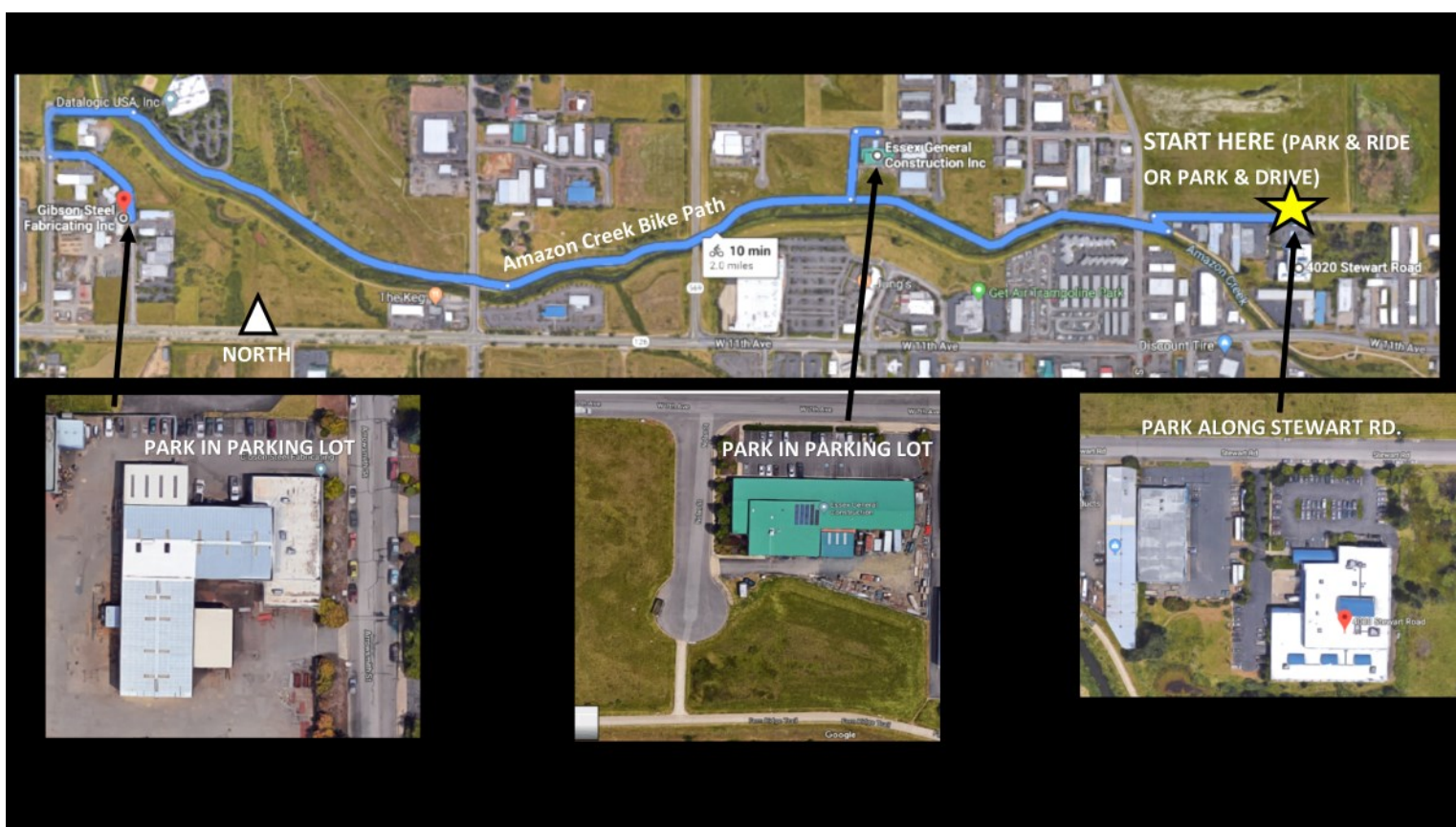


Join LTWC for our very first bike-friendly project tour! We're hosting a tour of three urban stormwater projects in west Eugene all accessible along the Amazon Creek Bike Path. **The tour will begin at Mountain Rose Herbs' headquarters and will also include stops at Essex General Construction and Gibson Steel Basins (see map below).**

For the last 6+ years, we've been working with commercial and industrial partners to voluntarily address urban stormwater pollution by treating it before it flows into storm drains and local waterways. In this time, we have reached out and made connections with over 300 businesses through our Urban Waters & Wildlife Program, and we've either implemented or completed landscape designs for 32 projects to manage nearly 100 acres of stormwater! Thanks to a partnership with the cities of Eugene and Springfield, Oregon DEQ, SureCrop Farm Service, and others, and the interest of local businesses, we've been able to achieve these significant milestones, with much more work to be done!

The three businesses featured in this tour all participated in LTWC's **"Trout Friendly Landscapes" program**, which incentivizes businesses to update or enhance their landscapes and maintenance practices to reduce pesticide and water use, improve soil health, increase native and pollinator friendly spaces, and to incorporate stormwater management. LTWC provides businesses with technical assistance in the form of landscape (re)design, permitting and contractor selection assistance, construction oversight, and long-term maintenance support.

Attendees are encouraged to bring their bikes for this tour, but folks are also welcome to join us by car—each site is readily accessible by either. There is ample parking along Stewart Road at near Mountain Rose Herbs' headquarters for folks wanting to either park and ride or park and drive to the next stops. Tour starts at 5:30 p.m. sharp. We hope to see you there! For questions, call 541-338-7055 or operations@longtom.org.



Designing for Downstream

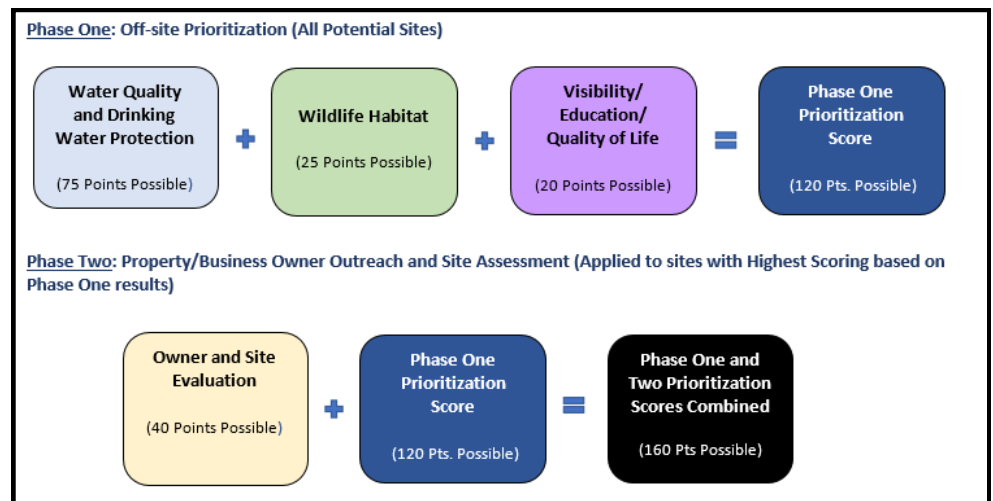
Process for Prioritizing Potential Urban Stormwater Projects

The Long Tom Watershed Council, along with partners including the cities of Eugene and Springfield and many local stakeholders, share a common goal in reducing the impacts of urban runoff for a healthier Upper Willamette River system. Urban areas are complex systems with a mix of environmental challenges, and LTWC's Urban Waters & Wildlife Program has been working to address these challenges by partnering with private business owners to implement voluntary stormwater improvement projects—typically vegetated landscape facilities such as bioswales and rain gardens. Since 2014, the Urban Waters & Wildlife Program has completed approximately 20 projects on commercial and industrial properties throughout Eugene-Springfield. After the program's first few years of outreach and project implementation, hundreds of businesses, schools, and churches have expressed interest in voluntary stormwater projects thus demonstrating enough interest from area landowners to sustain a voluntary stormwater program. From the projects that were installed early in the program, LTWC has data showing that these stormwater projects are significantly reducing pollutant loads into local waterways. Given this tremendous enthusiasm for participation in the program, and driven by the proven positive impact, LTWC embarked on seeking funding to develop a system for prioritizing projects that would effectively and efficiently address water quality issues with our limited resources in a way that is consistent with the goals and priorities of our partners.

In 2017, LTWC received a grant from the Oregon Watershed Enhancement Board to develop and apply a methodology for prioritizing potential projects based on which will have the greatest impact when considering a variety of social and environmental benefits. Jeff Krueger of JK Environments was contracted to assist in developing and coordinating a Technical Advisory Team, providing process feedback, and summarizing the findings. Thus, a Technical Advisory Team was formed, consisting of approximately 20 local experts and partners, to assist us in developing criteria for prioritizing projects, and a lens through which we could evaluate projects based on their impact on watershed health.

During the team's work sessions, the team co-crafted prioritization criteria under the following general categories: *Water Quality & Drinking Water Protection*; *Wildlife Habitat*; *Visibility/Education/Quality of Life*; and *Property/Business Owner and Site*. For each criteria, a project could score a range of points depending on how well the project met that criteria. For example, projects within the source areas for public drinking water supplies scored higher in the relevant criteria than those that were not. Many of the selected criteria could be evaluated through hard data, but some evaluation markers, such as owner willingness to participate over the long term, requires a different analysis tool: professional judgement. To address this, the prioritization process was broken into two phases: Phase One, based primarily on available

Graphic Information Systems (GIS) mapping data to score the sites while Phase Two entails reaching out to those locations that rank highly in phase one, and perform site visits to complete the professional judgement scoring. The map on page 6 shows the combined result of all the mappable criteria, zoomed in on the Eugene/Springfield area, Areas in red scored the most points across all the different mappable criteria combined; *(continued on page 6)*



Long Tom in the News!



Enjoying a cup of coffee with the Register-Guard



Cover reprinted with permission of The Tribune News

Did you see this important work featured in your local papers? Both the Junction City *Tribune News* and the Eugene *Register-Guard* featured the collaborative efforts happening on the Long Tom! As you may have read, the Council and partners at the City of Monroe and the Army Corps of Engineers are embarking together on the next phase of this critical work for the watershed! You can read the full *The Register-Guard* article about this work, and watch video interviews with LTWC staff and partners online. There is a link at the project page on our website: longtom.org/springchinook.



This community effort to put our next fish passage milestone within reach is not possible without meaningful support from our community members and donors just like you! Your gifts are our most powerful form of funding to get the work that matters to you accomplished!

Since we announced this campaign, we've received several generous donations totaling \$6,005 already! That brings us to \$114,005 toward our \$190,000 goal!

We want to extend a warm and heartfelt appreciation to the following donors who helped us start this campaign off strong!

- UP TO \$150:** Laura Allen, Merle & Kathy Allen, Nancy Hafner, Einar & Deb Ingebretsen, Jessica Lambright, George & Pat Miller, Anami Ridge, Charles & Karen Van Duyn, Peter Pollock & Diane Yates
- UP TO: \$500:** Doug & Linda Carnine, Allen Dong, McKenzie Flyfishers, Jim & Christine Pendergrass, Whitey Lueck
- UP TO: \$2,500:** Ray Morse & Phyllis Helland, Mountain Rose Herbs

Thank you to each and every one of our donors for this incredibly strong start and showing that you care about these little fish, and a healthier Long Tom Watershed. **You can learn more about this project and give online at www.longtom.org/springchinook**

Other Gifts—Thank You!

One Tree Planted, Lee & Veronica Davis (office rent)

Introducing our newest intern, Allison Lightfoot



We'd like to give a warm welcome to Allison Lightfoot, LTWC's newest intern who is assisting on a variety of projects. Allison has been in Oregon for

almost four years and will be graduating this spring from the University of Oregon with a B.S. in environmental science and a minor in geology. Prior to moving to Oregon she lived in Madison, WI and completed an Associate of Applied Science degree in biotechnology. Before that she lived in St Paul, MN and completed an Associate of Arts degree focusing on women's studies and cultural studies. Learning has always been a motivator and a passion for her, and she doesn't think she will stop at a B.S. degree! Allison also enjoys science fiction, biking, collaging, and spicy food. Fun fact: Allison went to state competitions in elementary school for speed jump roping and still considers herself a speed roper to this day!

At the Coyote Creek South Restoration Project Allison has been assisting with post-project monitoring by gathering pool depth gauge data and mapping pool extents with a GPS unit, as well as helping to edit existing maps about the project. She has is also assisting in pesticide sample collection along Amazon Creek for the Pesticide Stewardship Partnership program, and she's helped out in the office and at recent public events. Over the next month, she'll be helping to add some exciting new content to our new website map, so be on the lookout for continued website improvements! Thank you, Allison, for sharing your many talents with LTWC!

The Long Tom Watershed Council, a local nonprofit, counts on participation from many people and organizations. The local office of the Bureau of Land Management (BLM) donates postage for our mailings. They use the following disclaimer, standard procedure for all BLM partnerships:

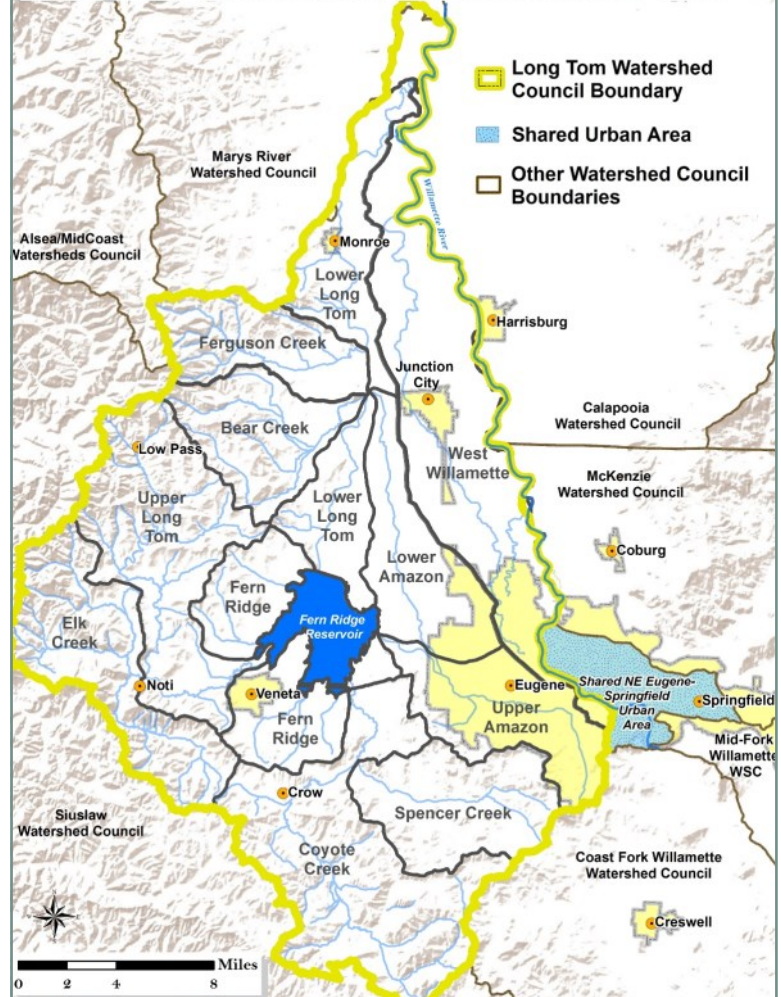
BLM Disclaimer: "The views and conclusions contained in this document are those of the authors and should not be interpreted as representing the opinions or policies of the U.S. Government. Mention of trade names or commercial products does not constitute their endorsement by the U.S. Government."

The Long Tom Watershed Council is still a local nonprofit (since 1998) with no government authority. We partner with local people, businesses, and agencies in the interest of finding local solutions and bringing grant funding from private and public sources to do restoration, education, and monitoring work in the Long Tom River basin. We're thankful for the donation of postage expenses!

LTWC Board of Directors

- Chair:** Shelly Miller
- Vice-Chairs:** Ginnie Grilley & Jonathan Powell
- Treasurer:** Dave Thomas
- Secretary:** Lindsay Reaves
- Members:** • Jabrila Via • Jamie Newsome • Pat McDowell
• Darian Lightfoot • Nikolai Hall • Alec Hrynyshyn

Long Tom Watershed Sub-basins & Area of Work

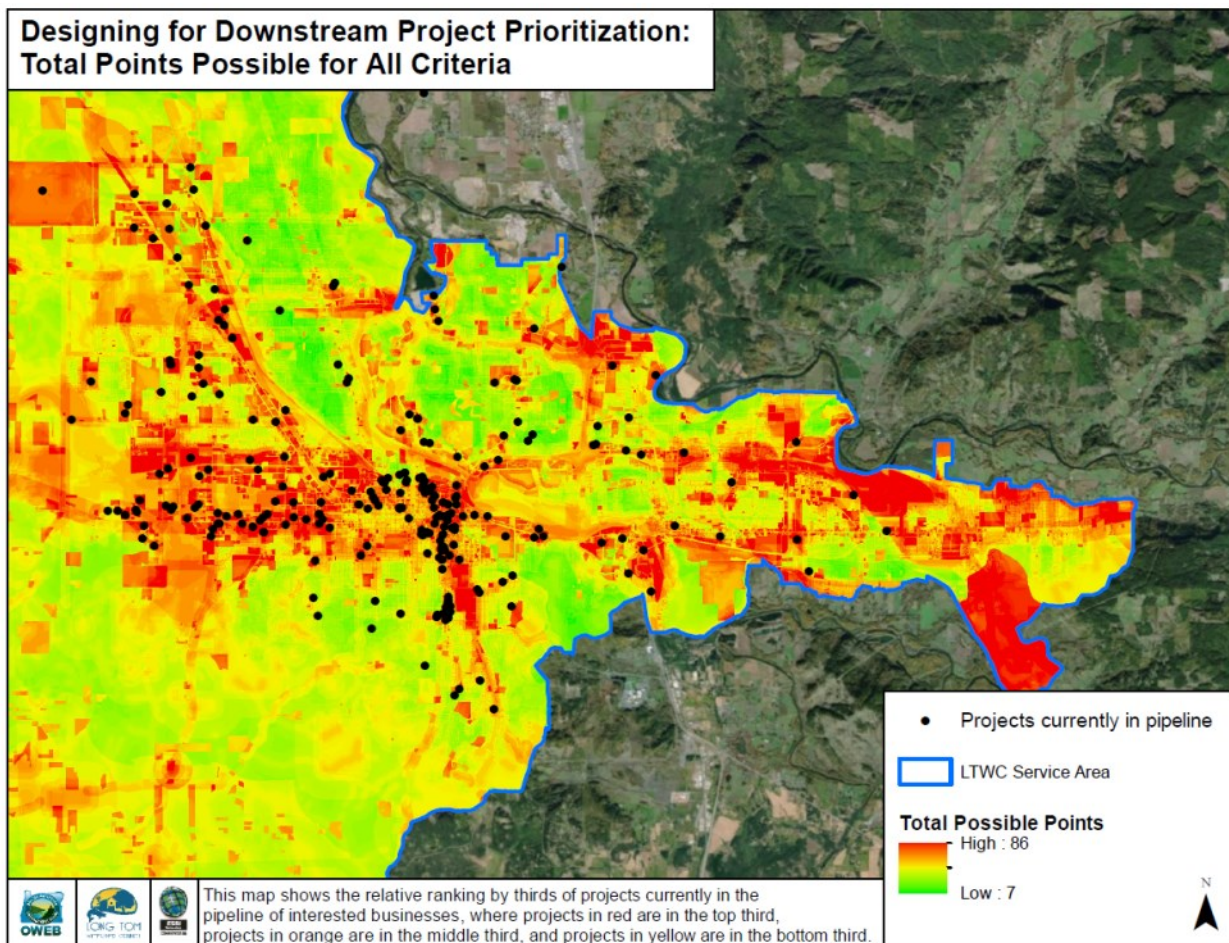


Council Staff Contacts

- Clinton Begley, Watershed Coordinator/ED:** 541-654-8965
- Rob Hoshaw, Operations Director:** 338-7055
- Dana Dedrick, Special Projects Lead:** 654-8965
- Jed Kaul, Fish Biologist:** 338-7058
- Katie MacKendrick, Ecologist:** 338-7033
- Sarah Whitney, Urban Habitat & Stormwater:** 654-8965
- Amanda Reinholtz, Habitat & Water Quality Spc:** 338-7060
- Heidi Heisler, Fiscal Manager:** 338-7042
- Sarah Pollock, Collaborative Operations Coord.:** 338-7055
- Miranda Hawkes, Stormwater Drafter/Designer:** 654-8965
- Abby Colehour, Restoration Projects Mgr:** 338-7033

areas in green have been assigned the fewest points and have lower priority scores. The black dots on the map are potential project sites; projects falling in red portions of the map score more prioritization points in the mappable criteria than those falling on green portions of the map. The major outcome of this work is a Project Prioritization Matrix. Refinements are currently being made to make the prioritization process more efficient, repeatable, and therefore effective, but the prioritization process is currently being utilized by our Urban Waters program staff and projects are rolling out the door!

We would like to thank all the members of the Technical Advisory Team for lending their ideas and expertise to this important process, and we also want to thank and recognize Jeff Krueger for helping us lead this effort and the creation of the final report on the process.



Partner Event

Oregon State University Extension: “Preparing Your Home to Withstand a Blaze!”

Saturday, May 18th, 9 a.m. - 3 p.m.

Oregon Department of Forestry Office, 3150 Main Street, Springfield, OR 97478

This spring is the best time to give your home and property the very best chance against wildfire. At this one day workshop participants will learn how to:

- Reduce the risk of fire on their property
- Spot areas that need work on the home and landscape within the first 200 feet of your home.

Cost is \$15/person (includes lunch and field trip transportation). **Advance registration is required.** Online at <https://beav.es/Zc5>; 541-579-2150 or emailing Lauren Grand at lauren.grand@oregonstate.edu.

