

## WHAT DOES THE LTWC URBAN WATERS & WILDLIFE PROGRAM DO?

The Urban program is engaged in many activities in the communities of the Long Tom Watershed:

- Water quality monitoring
- Public Education
- Building broad coalitions with local and state government & non-governmental entities, utilities, and non-profits
- Landowner partnership

.... all to reduce pollutants entering our local rivers and streams, and to introduce wildlife habitat deep into the heart of the city.

*We are here for the health of our whole watershed, human and ecological.*

### *How are we working on watershed health?*

Our stormwater enters Amazon Creek or the Willamette River untreated -- unless it's managed with a rain garden. In addition to the monitoring, outreach and

education functions, the Urban program also runs The Trout Friendly Landscapes (TFL) initiative. Through the TFL we provide design, construction management, and monitoring assistance to schools, businesses, industrial properties and civic spaces installing voluntary rain gardens.

## INTERESTED IN INSTALLING YOUR OWN RAIN GARDEN?

LTWC does not currently offer design services for residences - but there are a lot of resources available to get you started!

General information:

[www.eugene-or.gov/DocumentCenter/View/16990/Rain-Gardens-Fact-Sheet](http://www.eugene-or.gov/DocumentCenter/View/16990/Rain-Gardens-Fact-Sheet)

Oregon Rain Garden Guide:

[seagrant.oregonstate.edu/sgpubs/oregon-rain-garden-guide](http://seagrant.oregonstate.edu/sgpubs/oregon-rain-garden-guide)

Native plant nurseries:

[www.longtom.org/wp-content/uploads/2012/05/Southern-Willamette-Valley-Native-Plant-Nurseries-and-Seed-Producers.pdf](http://www.longtom.org/wp-content/uploads/2012/05/Southern-Willamette-Valley-Native-Plant-Nurseries-and-Seed-Producers.pdf)

City of Eugene Stormwater Information:

[www.eugene-or.gov/468/Stormwater-Information](http://www.eugene-or.gov/468/Stormwater-Information)

City of Springfield Stormwater Information:

[www.springfield-or.gov/city/development-public-works/clean-water-and-stormwater/](http://www.springfield-or.gov/city/development-public-works/clean-water-and-stormwater/)

Contractors trained in Green Stormwater Infrastructure Maintenance:

[www.eugene-or.gov/DocumentCenter/View/46007/MasterContractorList](http://www.eugene-or.gov/DocumentCenter/View/46007/MasterContractorList)

Sarah Whitney  
Program Manager

urbanwaters@longtom.org  
541-654-8965 x104



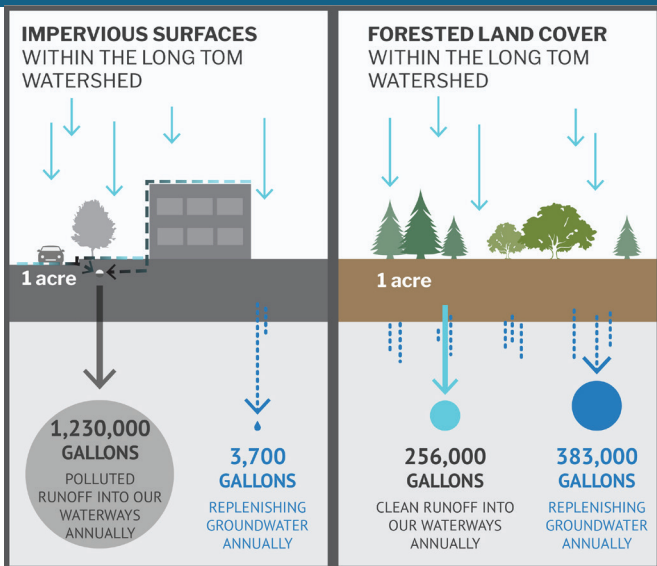
# Urban Waters & Wildlife Program



**Trout Friendly Landscapes**  
amazoncreek.org

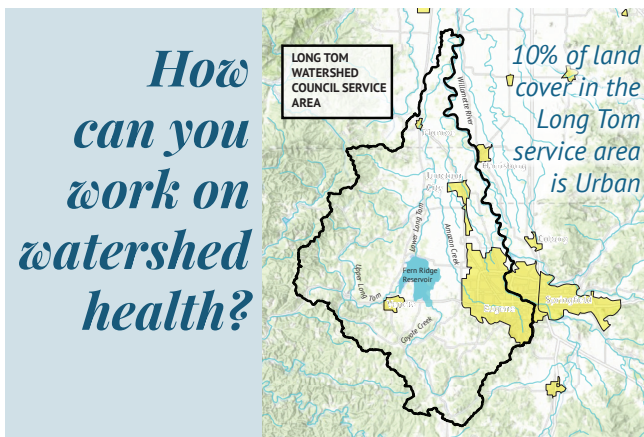


# IMPERVIOUS SURFACES IN URBAN AREAS:



*The impervious surfaces in urban areas change how stormwater behaves:*

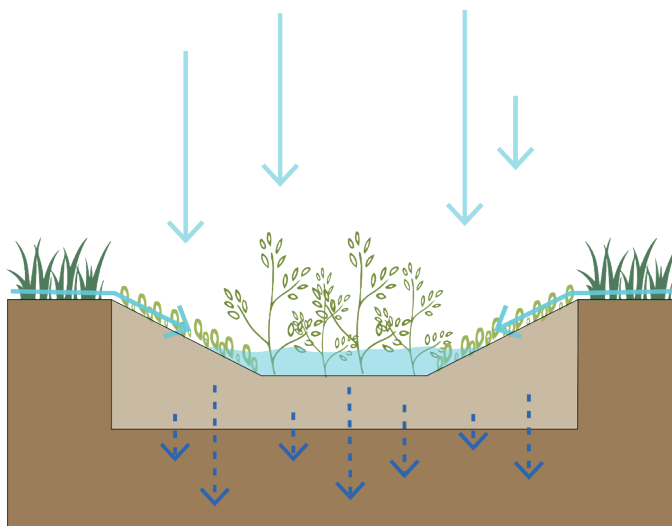
- Concentrate pollutants
- Speed the rate of runoff
- Increase in-stream erosion
- Increase temperature and volume of runoff
- Prevent rainfall from replenishing groundwater



# RAIN GARDENS:

*Rain gardens are areas that allow storm water to pool in contact with soils and plants, and are a key strategy to mitigate the effects of urban impervious surfaces. They help the landscape function more similarly to pre-urbanization conditions through the following:*

- Capture rainfall, surface runoff, and roof water
- Hold stormwater, providing flood resiliency
- Use porous soils and select plants to remove pollutants
- Provide pollinator & wildlife habitat
- Allow groundwater recharge



# WHAT DO RAIN GARDENS LOOK LIKE?



*Rain gardens can look different based on site conditions and needs*

