



Northeast Coyote Wetland and Prairie Restoration with the Return of Fire



Abby Colehour (LTWC, Restoration Projects Manager)
Katie MacKendrick (LTWC, Restoration Ecologist)
Chris Vogel (ODFW, Habitat Restoration Manager)

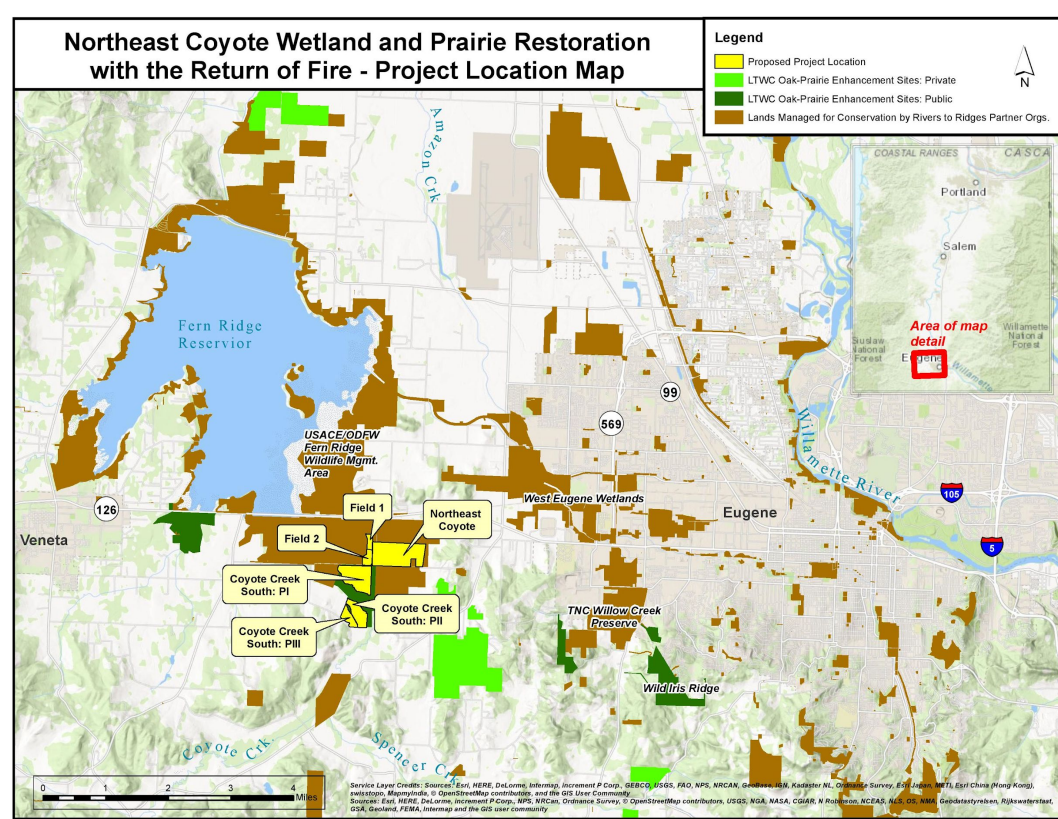


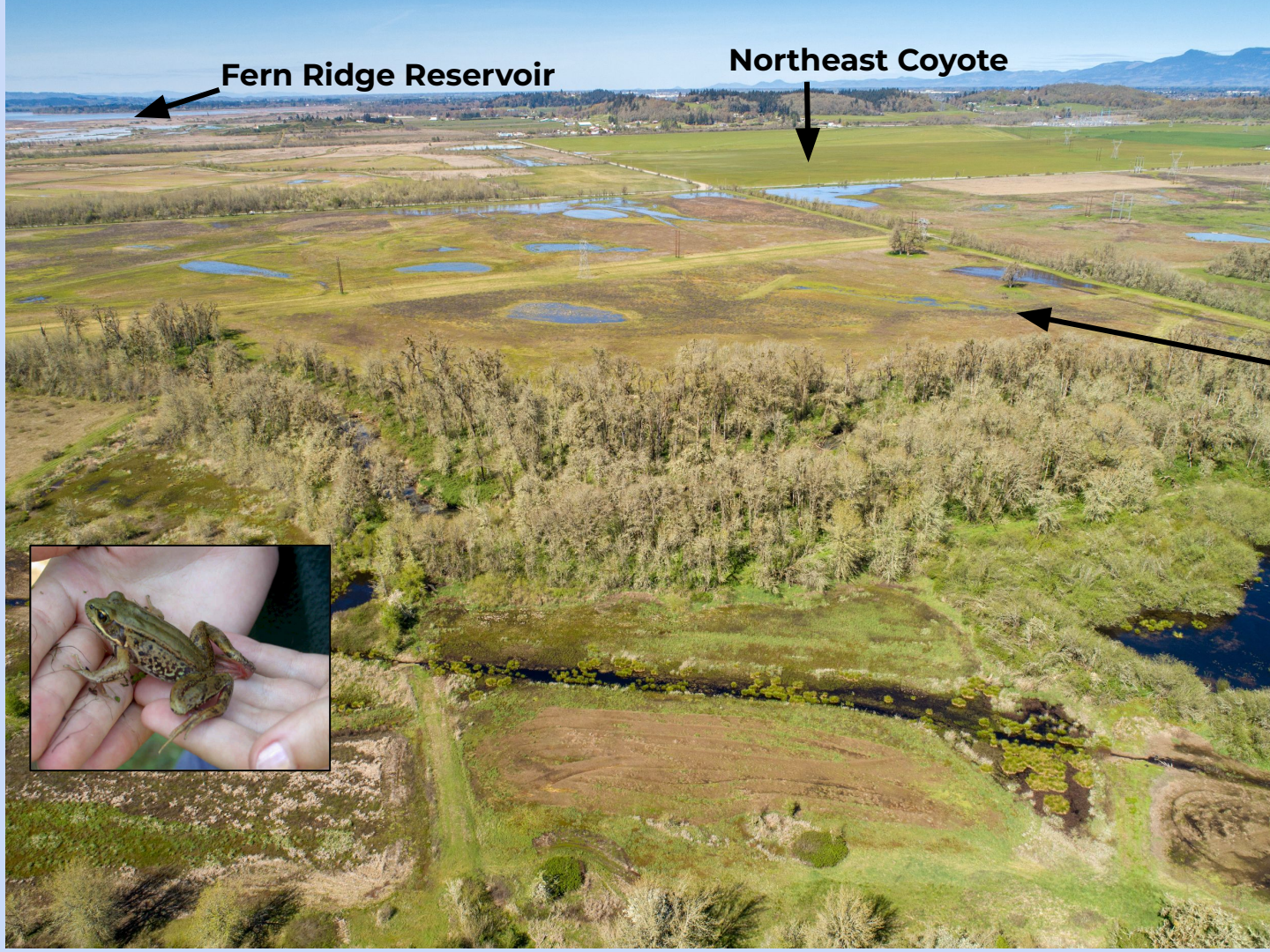


Kalapuya Ilihi, the traditional indigenous homeland of the Kalapuya people.

Following treaties between 1851 and 1855, Kalapuya people were dispossessed of their indigenous homeland by the United States government and forcibly removed to the Coast Reservation in Western Oregon.

Today, descendants are citizens of the Confederated Tribes of Grand Ronde Community of Oregon and the Confederated Tribes of the Siletz Indians of Oregon, and continue to make important contributions across the land we now refer to as Oregon





Fern Ridge Reservoir

Northeast Coyote



**Coyote Creek South
Phase I (post-treatment)**



Photo credits: Paul Gordon
(aerial), Lara Jones (larks)

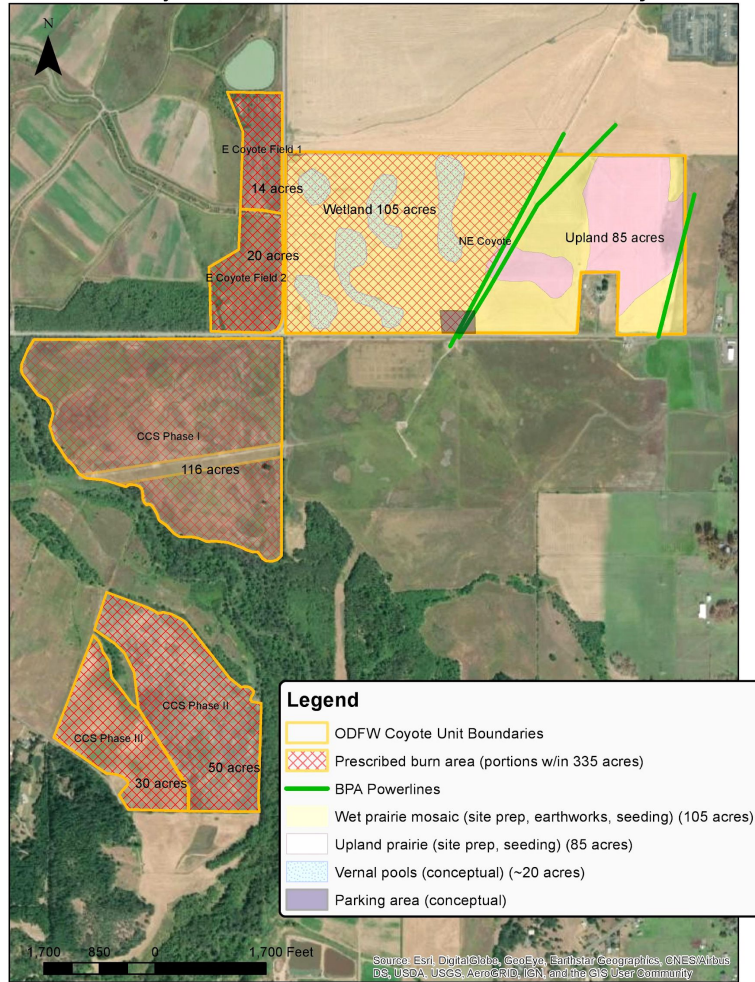
Northeast Coyote

Photo credit: Brent Ross

Looking northeast

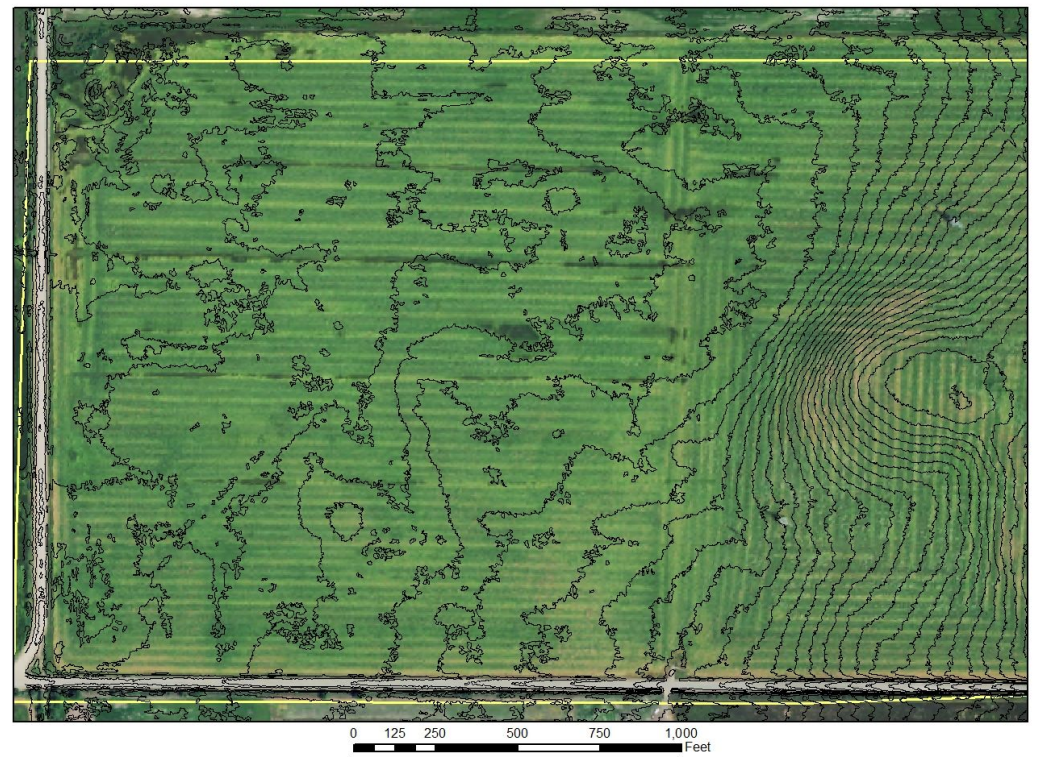


Northeast Coyote, CCS, and the Return of Fire Project Areas





Coyote Creek Northeast: 6 inch contour map over 2014 photo



**Restore surface hydrology
105 acres
Wet prairie/vernal pool mosaic**



- ❖ **Restore native plant communities**
- ❖ **105 acres wet prairie/vernal pool**
- ❖ **85 acres upland**



- Grass Mix
- Prairie Mix: Competitive
- Prairie Mix: Sparse
- Prairie Mix: Upland
- Prairie Mix: Wet
- Vernal Pool Mix: Amphibian
- Vernal Pool Mix: Competitive
- Vernal Pool Mix: Dense
- Vernal Pool Mix: Sparse



Reintroduce ecological burning

335 acres

**Includes Coyote Creek South Phase
I, II, & III**

Coyote Creek South Phase I

Photo credit: Brent Ross

Looking South



Coyote Creek South Phase II & III

Photo credit: Brent Ross

Looking South

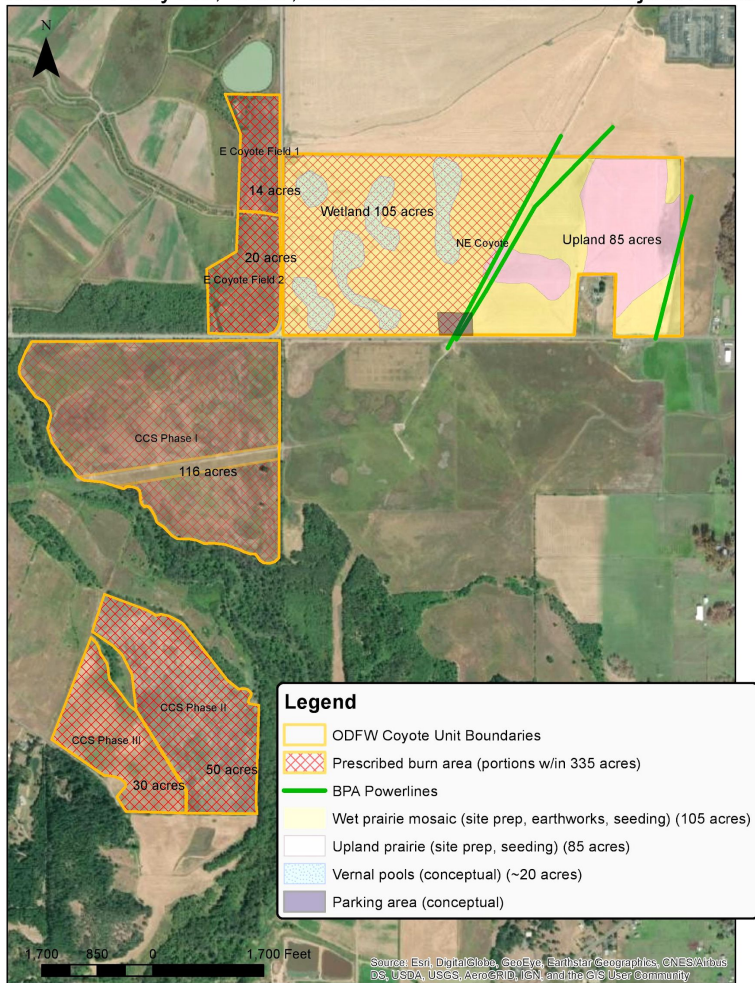




Coyote Creek South Phase II & III

- ❖ Site prep and seeding native wetland/upland plants (ODFW)
- ❖ Prescribed burning (OWEB)

Northeast Coyote, CCS, and the Return of Fire Project Areas



OWEB request	Match-Cash	Match-In-Kind	Total project cost
\$244,527	\$25,850	\$130,039	\$400,416

Element	Q1 2020	Q2 2020	Q3 2020	Q4 2020	Q1 2021	Q2 2021	Q3 2021	Q4 2021	Q1 2022	Q2 2022	Q3 2022	Q4 2022	Q1 2023	Q2 2023	Q3 2023	Q4 2023	Q1 2024	Q2 2024	Q3 2024	Q4 2024
CCS Phase II & III site prep																				
herbicide spray																				
Cultural surveys																				
Forms, agreements, permit applications																				
Volunteer bird monitoring																				
Seeding planning																				
Earthworks planning, hydrologic modeling																				
Bird surveys																				
Earthworks implementation																				
Drill and broadcast seeding																				
Plant surveys																				
Prescribed burn planning																				
Prescribed burn at CCS Phase I, II, and III																				
Prescribed burn at Northeast Coyote																				
Weed management																				

Project proposal summary



Northeast Coyote

Wetland and Prairie Restoration with the Return of Fire

